

Topic 2:

Database Management System Architectures

DBMS Architectures – CSc 460 v1.1 (McCann) – p. 1/16

What is an ‘Architecture’ of a DBMS?

Definition: Schema

Definition: Architecture

.....

DBMS Architectures – CSc 460 v1.1 (McCann) – p. 2/16

The ANSI/SPARC Architecture (1 / 4): Background

a.k.a. Three-Level Schema

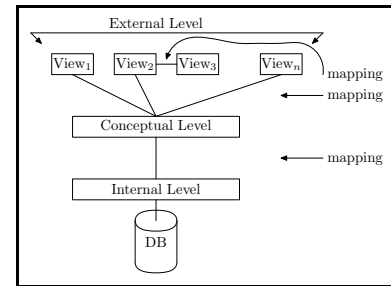
- A product of the Standards Planning and Requirements Committee (SPARC) of the American National Standards Institute (ANSI)
- Never formally adopted as an ANSI or International Standards Organization (ISO) standard, but still very influential
- Created to standardize terms and concepts surrounding DBs and DBMSes
- Goals:
 - Allow for multiple views of the data to satisfy a range of users
 - Allow for a physical (disk-level) description of the database
 - Provide an abstraction layer to separate the two

DBMS Architectures – CSc 460 v1.1 (McCann) – p. 3/16

The ANSI/SPARC Architecture (2 / 4): The Diagram

The ANSI/SPARC Architecture (3 / 4): The Levels

- External Level



- Conceptual Level

- Internal Level

DBMS Architectures – CSc 460 v1.1 (McCann) – p. 5/16

The ANSI/SPARC Architecture (4 / 4): The Mappings

The interfaces between the levels are known as *mappings*.

- External – External Mapping
- External – Conceptual Mapping
- Conceptual – Internal Mapping

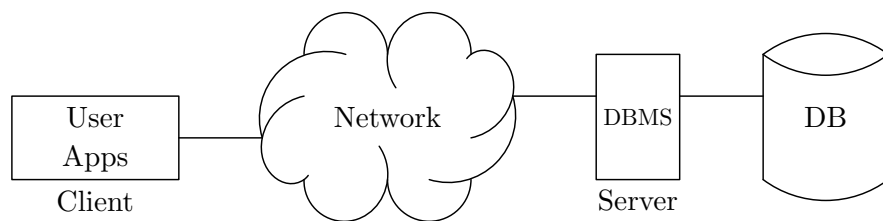
DBMS Architectures – CSc 460 v1.1 (McCann) – p. 6/16

Client - Server Architectures (1 / 3): Background

- Originally: DBMSes were built with a centralized architecture.
 - All components (OS, DBMS, compilers, etc.) on one computer
 - “All or nothing” with respect to failures
 - Often a performance bottleneck
- Decentralization became feasible when:
 - Computers became less expensive and more powerful
 - Broadband networking became commonplace

DBMS Architectures – CSc 460 v1.1 (McCann) – p. 7/16

Client - Server Architectures (2 / 3): Two-Tier



- One possible division of services:

Why add more tiers?

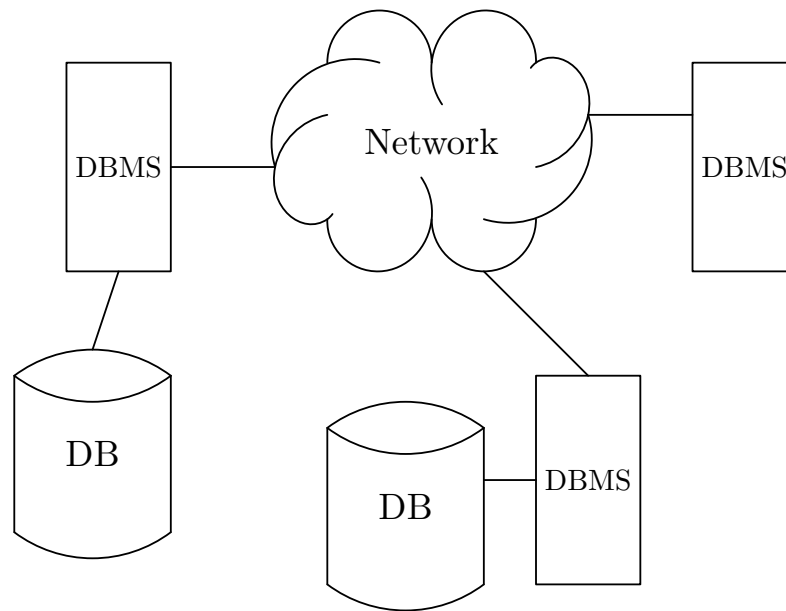
Example of a Four-Tier architecture:

DBMS Architectures – CSc 460 v1.1 (McCann) – p. 9/16

Distributed DBMSes (1 / 2): Motivation

- A single DBMS server (with its single DB) is a single point of failure
- Solution: A DBMS can be operated by several servers.
 - Each server has all, some, or none of the DB stored locally (some replication exists for performance and reliability)
 - DDBMS sites communicate to handle nearly all tasks
 - Goal: Be completely transparent to the users
- Again, details are beyond the scope of this course

Distributed DBMSes (2 / 2): Diagram



DBMS Architectures – CSc 460 v1.1 (McCann) – p. 11/16

Extra Slides

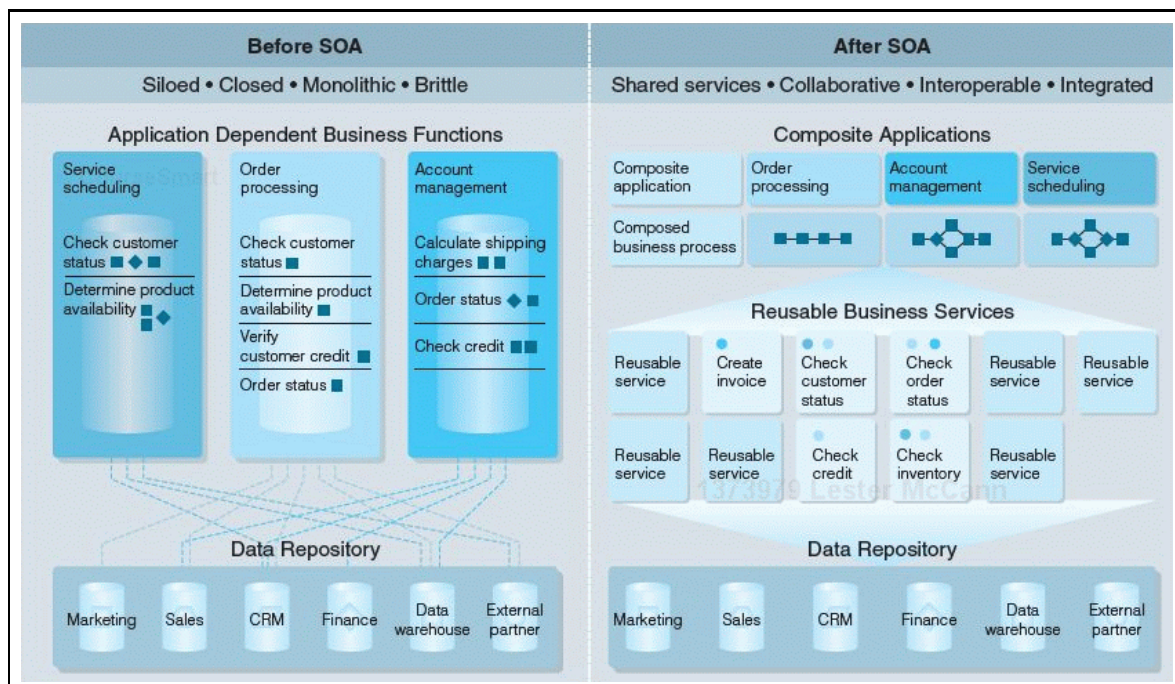
The remaining slides in this topic are some that I no longer cover in class. I won't ask about them on an exam, but they could be referenced on a homework.

Service-Oriented Architectures (1 / 3): Motivation

- SOA is a software design technique:
 - Apps are built using pre-written service modules
E.g., a data visualization module
 - Modules are located & accessed via a common interface
- Goal is to be flexible with the adoption of new business processes
- A web service is an interface used by service modules
 - That is, it can be a component of an SOA.
- Further details are beyond the scope of this course

DBMS Architectures – CSc 460 v1.1 (McCann) – p. 13/16

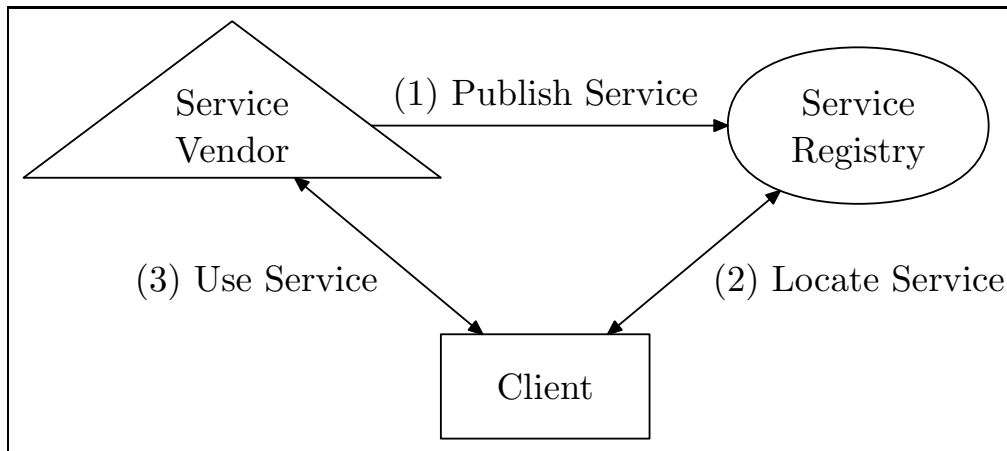
Service-Oriented Architectures (2 / 3): Before/After



Credit: Connolly/Begg, "Database Systems," 6/e, p. 72.

Service-Oriented Architectures (3 / 3): Accessing

Advertising, Finding and Using a Service:



One example: Web browser plug-ins.

(This approach is typical for web services, too.)

DBMS Architectures – CSc 460 v1.1 (McCann) – p. 15/16

Additional DB–Related Architectures

- Web Services
 - Ex: Stock Quotations; Google Docs

Two types:

- (a) Simple Object Access Protocol (SOAP)-based
 - Typically uses XML
- (b) RESTful (Representational State Transfer) – stateless
 - Ex: HTTP

- Data Warehouses
 - Support decision–making
- Cloud Computing
 - Provides dynamic resource provisioning (of DBMSes!)

DBMS Architectures – CSc 460 v1.1 (McCann) – p. 16/16