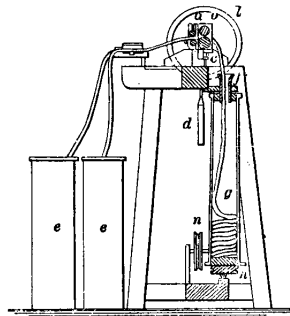


Can-roving Machine! (*Cotton-manufacture.*)

In this machine the slivers from the cans *e e* are drawn through the rollers *a b c*, the proper pressure being maintained by a weight *d*, and the consolidated slivers delivered into the can *g*, fixed to a pivot at the bottom, and supported at the neck *f*, while it is made to revolve by a strap passing round the pulleys *n* and *h*. This rotary motion gives the sliver a slight twist, which constitutes it a roving, as it passes in, and coils it up in the can in a regular manner.

When the can is full, it is opened, the *roving* taken out and transported to a roving-machine, where it is wound upon reels ready for spinning.

Fig. 1073.



Can-Roving Machine.