

Designs.

LATEST NOVELTIES

WOOLEN & WORSTED FABRICS FOR LADIES' & GENTS' WEAR.

EXPLANATIONS.

Weave.—The character thus ■ represents a riser or the rising of a harness. The character thus □ represents a sinker or the sinking of a harness. The top bar represents the first pick of filling—reading from left to right or vice versa.

Draft.—The character thus ■ represents a thread and to be drawn on the No. of harness in line with it. The character thus □ represents the skipping or passing the No. of harness in line with it. Always read from left to right—from the front to the back harness.

Warp Pattern.—Draw the threads through the harnesses in the order as laid down in pattern.

Filling Pattern.—Picks required to go into a certain shed will come right by starting the first thread of pattern with the first bar of weave and continue in their order downward unless otherwise specified.

168 PATTERNS WERE PUBLISHED IN THIS DEPARTMENT, VOL. I.

(Continued from page 29.)

PATTERN No. 24.

This represents a handsome check for business suitings, made of common yarns as follows:

WARP PATTERN.

- 8 light drab or olive.
- 2 dark brown.
- 1 black and red, D. & T.
- 2 dark brown.
- 1 black and red, D. & T.
- 2 dark brown.

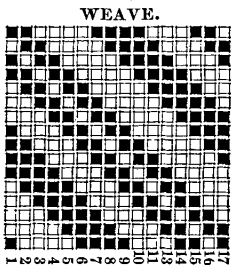
16 threads in pattern; 960 in the warp of 1 3/4 run, spun on the heavy side; yarn for the twist spun 4 run.

Reed No. 7, 4 threads in a dent.

FILLING PATTERN.

- 8 black.
- 8 gray mix, (80 wht. 20 blk.)

16 threads in pattern of 2 run, spun on the heavy side. Put in 32 picks per inch.



PATTERN No. 25.

This pattern represents a fancy ribbed check with spots of silk and fancy worsted appearing regularly in the centre and corner of each check or figure; it is designed for fancy worsted vestings, made as follows.

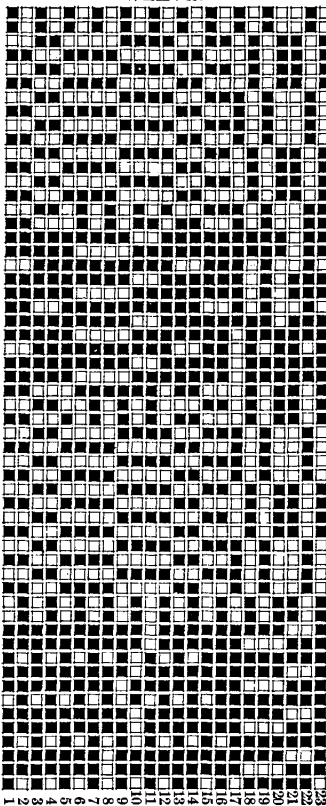
Warp 2,400 ends of black worsted; lay from 33 to 35 inches in the reed.

FILLING PATTERN.

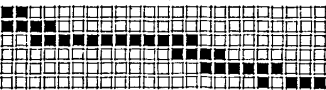
- 16 black worsted.
 - 1 light blue worsted.
 - 1 orange silk, (organzine.)
 - 1 black worsted.
 - 16 black worsted.
 - 1 light blue worsted.
 - 1 white silk, (organzine.)
 - 1 black worsted.
- } 12 thrs.
} 12 thrs.

56 threads in pattern; two patterns per inch in the loom.

WEAVE.



DRAFT.



PATTERN No. 26.

This represents a very handsome plaid for business suitings, made of fine stock, common yarn, as follows:

WARP PATTERN.

- 1 bright red.
- 6 black.
- 6 gray mix, (60 wht. 40 blk.)
- 6 black.
- 5 gray mix.
- 1 bright orange.
- 6 black.
- 5 gray mix.

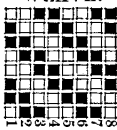
36 threads in pattern; 1,152 in the warp of 2 1/2 run. No. 7 reed, 4 threads in a dent.

FILLING PATTERN.

- 1 bright blue.
- 5 light cinnamon brown.
- 6 black.
- 1 bright red.
- 5 light cinnamon brown.
- 6 black.
- 6 light cinnamon brown.
- 6 black.

36 threads in pattern of 2 1/2 runs. Put in all the picks you can. Velvet finish.

WEAVE.

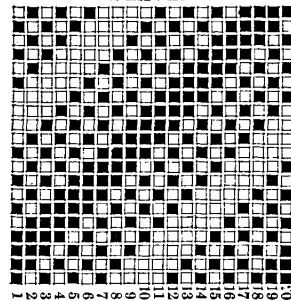


PATTERN No. 27.

This represents a broad diagonal wale for business suitings, made with course worsted warp of 1,120 ends, light brown stain, dark brown, blue or black as preferred. Lay out in No. 8 reed, 4 threads in a dent.

Filling all double any twist of any two suitable colors twisted together, spun 6 run. Put in 35 picks per inch.

WEAVE.



PATTERN No. 28.

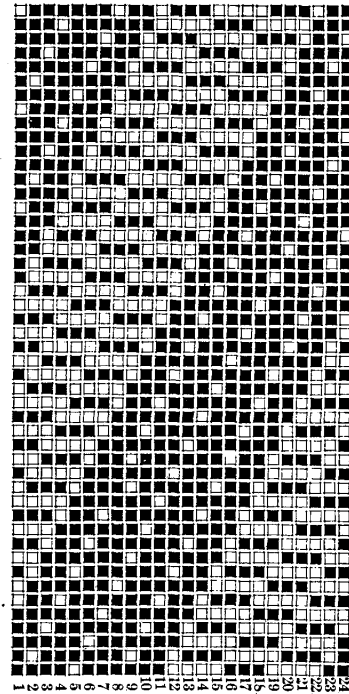
This design represents a raised and sunk wale for coatings, made of medium worsted yarns as follows:

Warp, dark plum color, of 2,400 ends, laid in the reed about 34 inches.

Filling, red brown or maroon color, about 66 picks per inch.

A handsome plaid or check may be made to a good advantage by using silk twisted with a worsted thread of different colors in both the warp and filling—the sample in our possession is so made.

WEAVE.



PATTERN No. 29.

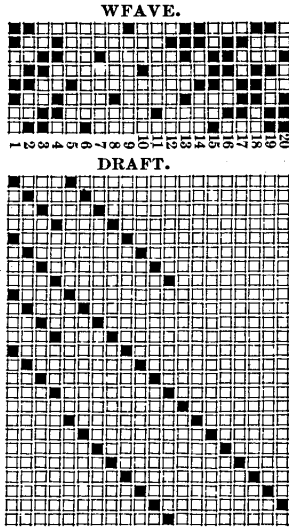
A fancy stripe for trouserings of three combined weaves, the first four harnesses and the eight back harnesses weave the face of the fabric, and the eight middle ones, the back of the fabric; made of fine worsted and silk yarns as follows:

WARP PATTERN.

- 1 olive brown.
 - 1 black.
 - 1 olive bro. twist with wht. silk
 - 1 black.
 - 1 red and blue worsted, D. & T.
 - 13 black.
 - 1 red and blue worsted, D. & T.
 - 1 black.
- } 32 thrs.

48 threads in pattern; 2,880 in the warp;

lay in the reed 33 to 35 inches, as desired.
Filling, fine black worsted; 64 to 70 picks per inch.



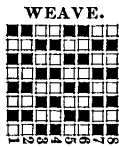
PATTERN No. 30.

This represents a good style of hair-line stripe for trouserings in fine stock. Dressed 2 of black and 2 light gray mix, (85 white and 15 black), 2,000 ends in warp of 5 run yarn.

Reed No. 13½, 4 threads in a dent.

Filling pick and pick of light gray mix—same as in warp—and black, spun 5½ run; 60 picks per inch.

The gray filling passes over the gray in warp and under the black; the black filling passes over the black in warp and under the gray.



PATTERN No. 31.

This design represents an exceedingly handsome thing for coatings or whole fancy business suitings: the ground work on the face of goods is double pick, while the backing thread in both warp and filling are thrown on the face in such a manner as to form a handsome diagonal wale about ½ inch in width. Mills having the facilities will do well to produce this pattern as there is great a range in it.

WARP PATTERN.

- 1 dark mix (80 blk. 15 wht. 5 yel.)
 - 1 black.
 - 1 dark mix.
 - 1 light mix (80 wht. 15 blk. 5 grn.)
 - 1 black.
 - 1 light mix.
- } 48 thrs.
} 12 thrs.

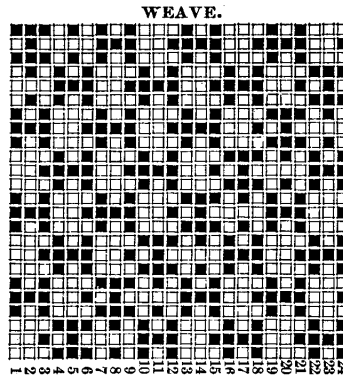
60 threads in pattern; 2,160 in the warp, of 4 run yarn for the mixes, and 3 run for the black. Draw into a No. 10 reed, 6 threads in a dent.

FILLING PATTERN.

- 1 light olive brown.
- 1 dark green.
- 2 light olive brown.
- 1 dark blue.
- 2 light olive brown.
- 1 black.
- 1 light olive brown.

9 threads in pattern, all spun 4 run;

60 picks or over per inch. Run in all colors in the order as laid down.



PATTERN No. 32.

This represents a fancy stripe for ladies' dress goods in fine worsted yarns.

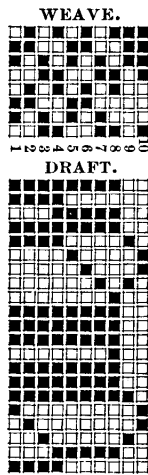
WARP PATTERN.

- 11 silver drab.
 - 1 lemon silk.
 - 8 silver drab.
 - 3 light olive.
 - 5 silver drab.
 - 1 maroon.
 - 1 silver drab.
 - 23 silver drab.
 - 2 orange silk.
 - 24 silver drab.
 - 1 maroon.
 - 1 silver drab.
 - 5 silver drab.
 - 3 light blue.
- } 8 threads.
} 8 threads.

102 threads in pattern; width of pattern 1½ inches.

Filling all drab, same shade as the warp.

This same weave and the first 37 threads in the draft, and warp pattern may be used for fancy trouserings—men's wear.



PATTERN No. 33.

A plaid for suitings, made of course or medium stock, and a good thing for small mills to make.

WARP PATTERN.

- 1 red and black D. & T.
- 4 dark blue.
- 1 red and black D. & T.
- 6 black.
- 6 dark blue.
- 6 black.
- 1 green and black D. & T.
- 4 dark blue.
- 1 green and black D. & T.
- 6 black.
- 6 dark blue.
- 6 black.

48 threads in pattern; 1,152 in the warp

of 2 run for the single, and spun 4 run for the double and twist.

Reed No. 8, 4 threads in a dent.

Filling pattern the same as the warp pattern, but spin the yarn ¼ run finer, and put in picks to make the plaid come out square when finished.



PATTERN No. 34.

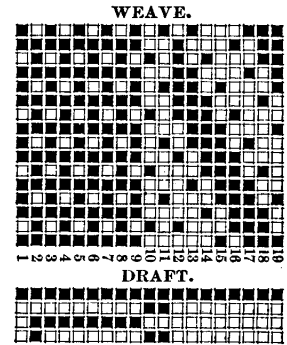
This represents a fancy stripe for trouserings, being a rib and diagonal weave combined it produces a very pretty effect.

WARP PATTERN.

- 24 dark olive worsted.
- 8 black worsted twisted with wht. silk.

32 threads in pattern; 2,688 in the warp. Lay out in the reed about 36 inches.

Filling all red brown of common woolen yarn, spun 4 run, and put in about 60 picks per inch.



PATTERN No. 35.

This represents a handsome basket and diagonal figure for suitings in coarse stock and is well worthy of attention; make as follows:

WARP PATTERN.

- 4 black.
- 4 dark gray, (75 blk. 25 wht.)
- 4 seal brown.
- 4 light gray, (75 wht. 25 blk.)

16 threads in pattern; 1,600 ends in warp of 2¾ run.

Reed No. 11, 4 threads in a dent.

FILLING PATTERN.

- 4 olive brown.
- 4 fancy mix (50 wht, 40 blk. 10 red.)
- 4 black.

12 threads in pattern of 3 run yarn; put in about 48 picks per inch.

Four colors can be used in the filling if desired which will produce a pretty effect, or only two colors; in fact by the changing of the filling various ways a nice line of patterns will be produced. Also the same can be done with the warp.

