

# Designs.

LATEST NOVELTIES

WOOLEN & WORSTED FABRICS FOR LADIES' & GENTS' WEAR.

EXPLANATIONS.

*Weave*.—The character thus ■ represents a riser or the rising of a harness. The character thus □ represents a sinker or the sinking of a harness. The top bar represents the first pick of filling—reading from left to right or *vice versa*.

*Draft*.—The character thus ■ represents a thread and to be drawn on the No. of harness in line with it. The character thus □ represents the skipping or passing the No. of harness in line with it. Always read from left to right—from the front to the back harness.

*Warp Pattern*.—Draw the threads through the harnesses in the order as laid down in pattern.

*Filling Pattern*.—Picks required to go into a certain shed will come right by starting the first thread of pattern with the first bar of weave and continue in their order downward unless otherwise specified.

168 PATTERNS WERE PUBLISHED IN THIS DEPARTMENT, VOL. I.

(Continued from page 127.)

PATTERN No. 91.

A fancy cassimere stripe for trouserings in medium stock, common yarn, and a good thing for small, country mills to make.

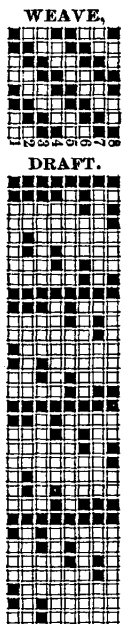
WARP PATTERN.

- 12 black.
- 2 white. } 10 threads.
- 2 black. }
- 12 black.
- 2 white. } 10 threads.
- 2 red and green, D. & T. }

44 threads in pattern; 1,684 in the warp of  $4\frac{1}{4}$  run; lay in a No. 11 reed, 4 threads in a dent.

Filling a dark olive brown, or dark red brown, of  $4\frac{1}{2}$  run and 48 picks per inch.

A good range of samples can be made from this pattern by changing the colors in the 2 and 2 striping.

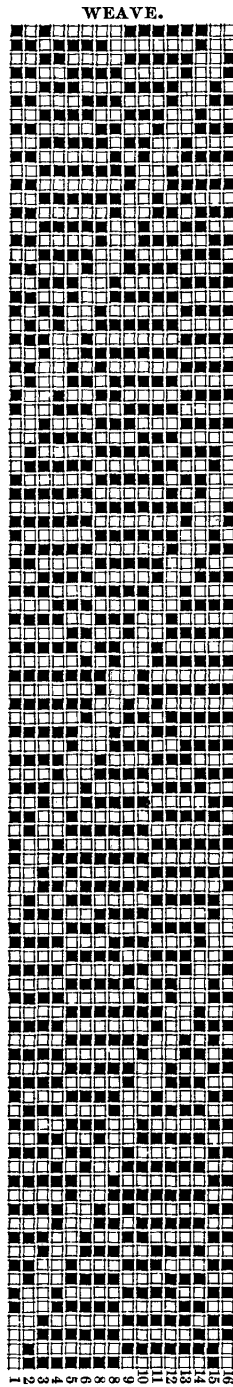


PATTERN No. 92.

This represents a very handsome diagonal figure for ladies' dress goods in cotton and worsted yarns; make with single black

cotton warp, 96 threads to the inch, finished goods.

Filling very fine single worsted of dark blue; 100 picks per inch—finished goods. Other solid colors can be used if preferred.



PATTERN No. 93.

This design represents a cassimere, herring-bone stripe for trouserings, made in the following manner:

WARP PATTERN.

- 1 red.
- 3 drab.
- 1 white.
- 4 black.
- 1 white.
- 3 drab.
- 1 red.
- 10 black.

24 threads in pattern; 1,536 in the warp of 4 run—spun on the heavy side; No. 10- $\frac{1}{2}$  reed, 4 threads in a dent.

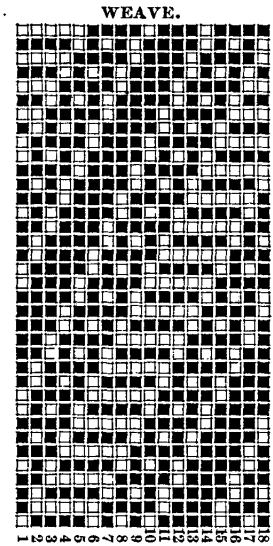
Filling all black of 4 run—spun on the light side; 45 picks per inch.



PATTERN No. 94.

This represents a nice, fancy diagonal for coatings, made with black worsted warp of 2,520 ends; lay out in a No. 12 reed, 6 threads in a dent.

Filling of common woollen yarn, either black, brown or dark blue, and spun 5 run; put in about 70 picks to the inch.

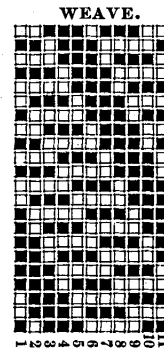


PATTERN No. 95.

This represents a pretty diagonal mix for whole suitings, and is a good thing made in the following manner:

Warp 1,600 ends of black, 4 run; lay out in a No. 11 reed, 4 threads in a dent.

Filling a mix as follows: 80% black, 10 of red and 10 of orange, spun 5 run and put in enough picks to make the goods feel firm.



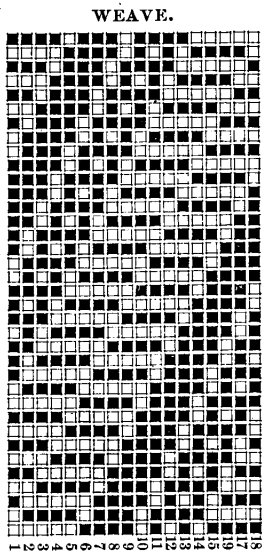
PATTERN No. 96.

This pattern represents a good diagonal of the wale style, for coatings or whole suitings, either in medium worsted or

woolen yarns; if of the latter make as follows:

Warp 1,800 ends, all black or dark blue, of  $4\frac{1}{2}$  run; lay out in a No.  $12\frac{1}{2}$  reed, 4 threads in a dent.

Filling the same as warp, or of any solid color, and spun 5 run; 60 picks per inch.



PATTERN No. 97.

A fancy hair-line stripe, wove with a 3-harness twill, for trouserings, and made as follows:

WARP PATTERN.

- 1 black.
- 1 orange. } 6 threads.
- 1 white.
- 2 black.
- 2 blue.
- 2 white.
- 1 black. } 6 threads.
- 1 blue.
- 1 white.
- 1 black. } 6 threads.
- 1 green.
- 1 white.

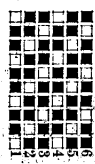
24 threads in pattern; 1,344 in the warp of  $3\frac{1}{4}$  run; draw into a No. 12 reed, 3 threads in a dent.

FILLING PATTERN.

- 1 black.
- 1 old gold.
- 1 red brown.

3 threads in pattern of 4 run; about 45 picks per inch. Give it a velvet finish.

WEAVE.

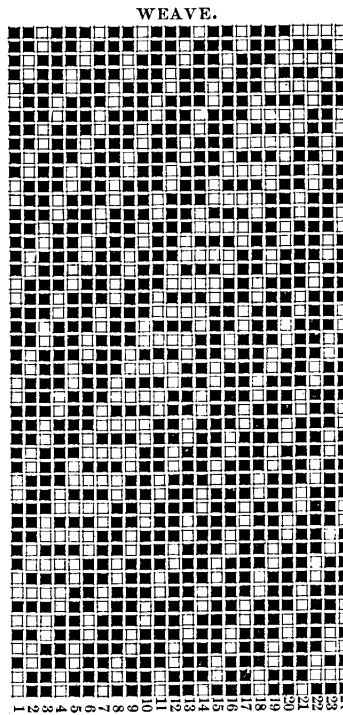


PATTERN No. 98.

This design is that of a fancy wide wale for coatings in worsted yarns.

Warp, a black, brown or blue, of 2,352 ends; lay in reed usual width for this class of goods.

Filling of the same color as warp, or it may be of a different color, and it should be a little finer than the warp. Put in sufficient picks to make the goods handle well.

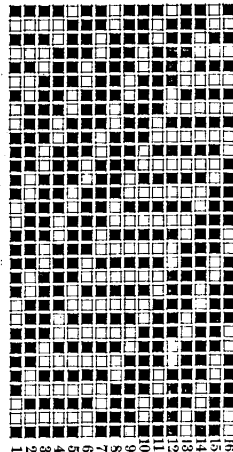


PATTERN No. 99.

This represents another fancy wale, of a narrow pattern, for coatings, and common yarn may be used of 5 run for the warp of 2,016 ends; lay in a No. 14 reed, 4 threads in a dent.

Filling  $5\frac{1}{2}$  run of same color as used in warp, or of a fancy mix will look well, and put in about 60 picks per inch.

WEAVE.



PATTERN No. 100.

This represents a pretty little plaid for business suitings made as follows:

WARP PATTERN.

- 3 dark red brown.
- 3 light gray.
- 3 dark gray.
- 3 light gray.
- 1 dark red brown.
- 1 light gray.
- 1 dark red brown.
- 3 light gray.
- 3 dark gray.
- 3 light gray.

24 threads in pattern; 1,152 in the warp  $2\frac{3}{4}$  run; draw into a No. 8 reed, 4 threads in a dent.

Filling pattern, the same as warp except

use light and dark drab in the place of light and dark gray, and black in the place of the dark red brown;  $3\frac{1}{2}$  run; about 40 picks per inch.

WEAVE.

