

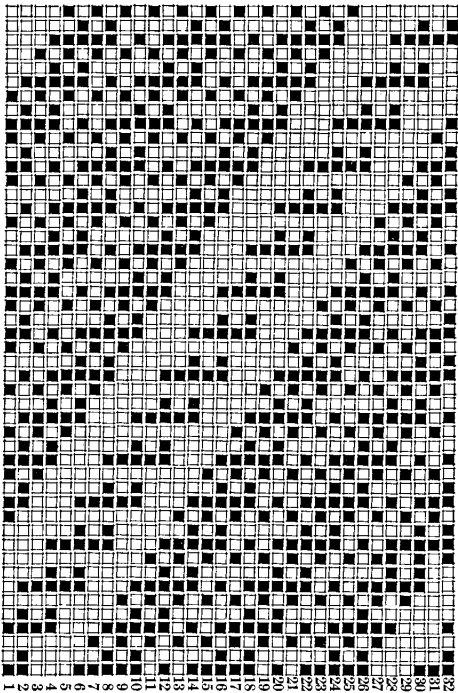
MISCELLANEOUS WEAVES.

PATTERN No. 1.

OVERCOATINGS.

WARP, 4,800 ends, 4 run, dark olive brown mix, 10% white.
No. 14 reed, 5 threads in a dent, 68½ inches wide.

WEAVE.



FILLING, 1 black worsted 2-24's. 2 black woolen, 4 run. 3 threads in pattern; 90 picks per inch. Run the first pick of filling in on the first bar of chain. Finished weight 25 to 26 oz.

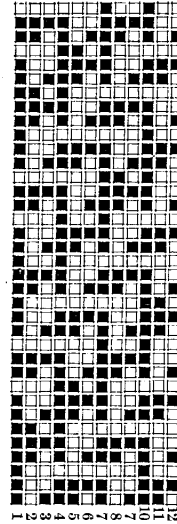
PATTERN No. 2.

WARP PATTERN.

- 1 dark olive brown mix 10% white, 3¼ run, 2-ply. } 12.
- 2 crimson, 4½ run, 2-ply. }
- 1 dark olive brown mix. } 72.
- 2 light olive brown, 1¾ run. }
- 1 dark olive brown mix. } 12.
- 2 bronze, 4½ run, 2-ply. }
- 1 dark olive brown mix. } 12.
- 2 light olive brown, 3¼ run. }

168 threads in pattern; 2,688 ends in the warp; No. reed 9½, 4 threads in a dent, 71 inches wide.

WEAVE.



FILLING PATTERN.

- 1 black and white mix, 5% white, 3¼ run, 2-ply. } 6
- 2 dark slate 1⅞ run. } 72.
- 1 black worsted loop, (small loop.)
- 2 dark slate.
- 1 black and white mix. } 6
- 2 dark crimson, 4½ run, 2-ply. } 12.
- 1 black worsted loop.
- 2 crimson, 4½ run, 2-ply.
- 1 black and white mix. } 6
- 2 dark slate. } 72.
- 1 black worsted loop.
- 2 dark slate.
- 1 black and white mix. } 6
- 2 dark bronze, 2½ run, 2-ply. } 12.
- 1 black worsted loop.
- 2 dark bronze, 4½ run, 2-ply. }

168 threads in pattern; 44 picks per inch.

L. A.

HERE is the pickout of a hair line, a good thing for small mills as many are not fitted for pick and pick work; through shortsightedness of mill owners buying looms with boxes on one end of loom only, bought for a certain class of goods. When the day for that was passed then the want of a fancy loom is felt, still the weaver must get along with them in some places.

Warp, 2 black, 1 gray. Filling, 2 gray, 2 black.

DRESSER.