



**LATEST NOVELTIES.**

*Continued from page 83.*

[Under this heading we shall publish in each issue numerous designs of the latest novelties in the line of Fancy Cassimeres, Worsteds, Chevots, Dress Goods, Cloakings, etc., the most of which will be taken from actual samples of the latest French and English patterns, which we will be regularly supplied with from the pattern house of E. Lehmann, Paris. In the examination of these designs for publication, we give the number of threads in the warp, the kind of yarns, and the picks per inch as shown by the finished goods; and in most cases give the width to lay in the reed.

We deem it unpracticable to attempt to give directions as to the size of yarns and other particular details, for the reason that probably not one mill in twenty would have the stock or facilities to produce them as given. We have, therefore, left that part for the superintendent, designer or boss weaver to arrange to his own liking and as will be adaptable to his stock. The basis as to the number of threads in warp, picks per inch, weaves and drawing-in drafts can be relied upon as correct: bearing in mind to commence in all cases to draw in as the threads are laid down in the dressing pattern, and in the drawing-in draft each black character (■) represents a thread to be drawn on the harness No. it stands in line with. Single width goods is the standard adopted in each instance.

If special information should be desired on any of these designs, it will be given under the heading of "Queries and Replies," in the next issue; or, if a private answer is desired, enclose postage for reply, and all such communications will receive our careful attention providing, however, that those requiring such information are on our subscription list.—Ed.]

**PATTERN No. 92.**

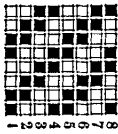
This pattern represents a common stripe for trouserings; made of medium stock and a good thing for small country mills to make.

**WARP PATTERN.**

- 4 light gray (20 black to 80 white).
- 6 dark brown.
- 4 light gray.
- 4 dark brown. } 20 threads
- 6 dark brown.

36 threads in pattern; 1152 in warp.  
Reed, No. 8, 4 threads in a dent.  
Filling, black; 36 picks per inch.

**WEAVE.**



**PATTERN No. 93.**

A fancy oblong-check for suitings; made of pretty fair stock, and good thing for small mills to run on.

**WARP PATTERN.**

- 1 dark brown.
  - 1 dark red.
  - 10 light gray (10 black to 90 white).
- 12 threads in pattern; 1248 in warp.  
Reed, No. 9, 4 threads in a dent.

**FILLING PATTERN.**

- 2 light gray (same as in warp).
- 13 dark brown.

15 threads in pattern; 40 picks per inch.

**WEAVE.**

The same as No. 92.

**PATTERN No. 94.**

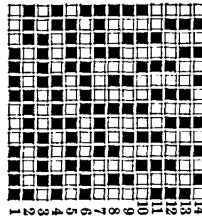
A fancy worsted stripe for trouserings.

**WARP PATTERN.**

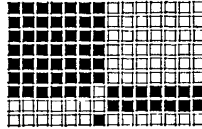
- 15 black, 2-60's.
- 1 seal bro., 2-60's with wht. silk. } 48
- 1 seal brown, 2-60's. } thrs.
- 1 seal bro., 2-60's with wht. silk. }

63 thrs. in pattern; 3024 in warp.  
Filling, seal brown, 2-60's; 100 picks.

**WEAVE.**



**DRAFT.**

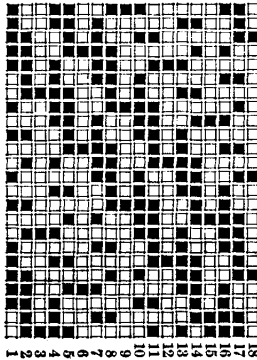


**PATTERN No. 95.**

A fancy double diagonal; will make a good thing for suitings either in worsted or fine woolen yarns; warp one color, and filling another or both the same.

Warp, 2700 threads. No. 12 reed; 60 picks per inch.

**WEAVE.**



**PATTERN No. 96.**

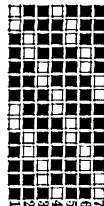
A combination stripe in worsted yarns, designed for trouserings.

**WARP PATTERN.**

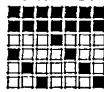
- 14 black.
- 7 dark purple.

21 threads in pattern; 3234 in the warp.  
Filling, black, 75 picks per inch.

**WEAVE.**



**DRAFT.**



**PATTERN No. 97.**

A fancy worsted, basket effect and stripe composed of a corkscrew weave, the filling pattern being produced by the reversing of the weave, thus producing the effect. It is a handsome thing for suitings.

**WARP PATTERN.**

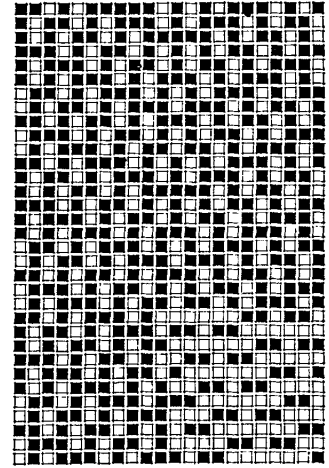
- 1 black worsted & red silk. } 11 threads.
- 1 black worsted. }
- 1 black worsted & red silk. }
- 22 black worsted. }
- 1 black worsted & green silk. } 11 thrs.
- 1 black worsted. }
- 1 black worsted & green silk. }
- 22 black worsted.

66 threads in pattern; 2640 in the warp.  
Reed, No. 16, 5 threads in a dent.

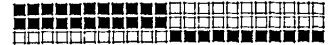
**FILLING PATTERN.**

The same as warp pattern, commencing with 22 black threads first. 90 picks.

**WEAVE.**



**DRAFT.**

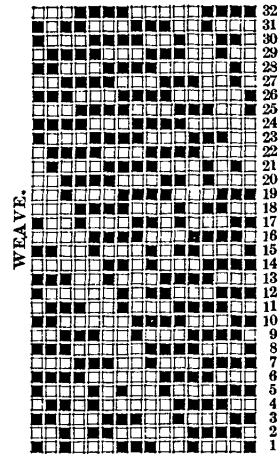


**PATTERN No. 98.**

A very tasty diamond effect for suitings; although it requires 32 harnesses to weave it according to sample, and worsted yarns, yet, we cannot see why the effect would not be very good if the weave was transposed and wove with 16 harnesses, warp method running as filling and filling as warp, with fine woolen yarns.

Warp, 1800 threads of smoke drab; draw into No. 12½ reed, 4 threads in a dent.

Filling, 1 black, and 1 brown, 72 picks.

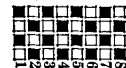


**PATTERN No. 99.**

A fancy thing for ladies' dress goods; made as follows: dress 18 threads of single blue worsted, and 2 threads of black cord made 6-ply from same size of yarn as that used in warp and twisted very hard and smooth. Calculate for 48 threads per inch finished goods. In reeding put one cord in a dent, fine threads two in a dent.

Filling pattern, the same as warp; with 40 picks per inch.

**WEAVE.**



**PATTERN No. 100.**

A fancy check for suitings, the weave giving it a zigzag appearance and is a good thing to make with common woolen yarns.

**WARP PATTERN.**

- 23 dark brown.
- 1 red and green D. & T., each 6 run.
- 23 black.
- 1 orange and green D. & T., each 6 run.

48 threads in pattern; 1344 in warp, of 3 run for single yarn.

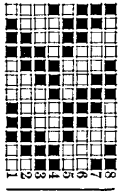
Reed, No. 9½, 4 threads in a dent.

**FILLING PATTERN.**

- 1 green and red D. & T., each 6½ run.
- 23 dark blue, 3¼ run.
- 1 red and orange D. & T., each 6½ run.
- 23 black, 3¼ run.

48 threads in pattern; 50 picks per inch.

**WEAVE.**



**PATTERN No. 101.**

A light weight fancy worsted for suitings; it being wove with 23 harnesses and 46 bars of chain, carries it out to a perfect repeat, thus avoiding the over-shot of three threads as is usually the case in this style of weaving.

**WARP PATTERN.**

- 1 black worsted and blue silk.
- 1 black worsted.
- 1 black worsted and orange silk.
- 1 black worsted.

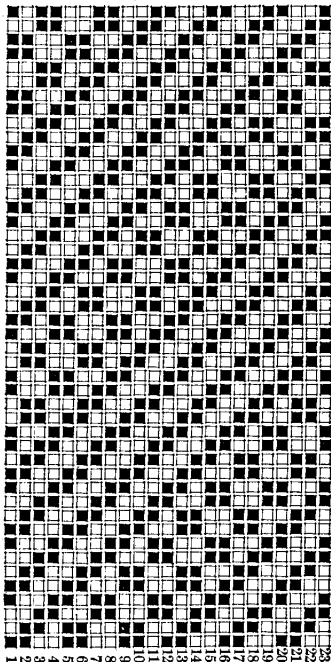
4 threads in pattern; 1840 in warp.

**FILLING PATTERN.**

- 1 black worsted and orange silk.
- 3 black worsted.

4 threads in pattern; 60 picks per inch.

**WEAVE.**



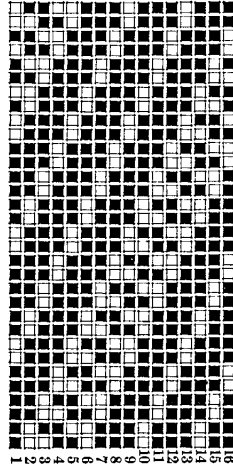
**PATTERN No. 102.**

A fancy three-cord diagonal, and as it produces a warp face, is a good thing for

using good stock in the warp, and a cheap grade in the filling. It can be made in any color desired or used for piece-dye.

Warp, 2400 threads; draw into No. 16 reed, 4 threads in a dent. Put in all the pick it will take.

**WEAVE.**



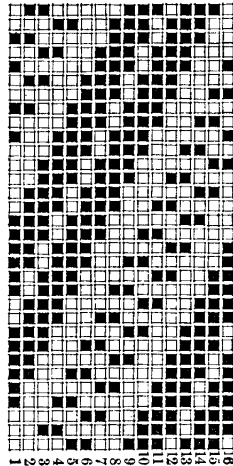
**PATTERN No. 103.**

This represents a fancy two-cord diagonal with warp and filling showing equal on the face, and is a good thing for worsted coatings.

Warp, 2400 threads, black worsted.

Filling, either dark blue or seal brown; would also look well run in pick and pick, 75 picks per inch.

**WEAVE.**



**PATTERN No. 104.**

A handsome stripe effect for suitings and a good thing to make with common woolen yarns, as follows:

**WARP PATTERN.**

- 1 thread brown.
- 1 " green.
- 2 " brown.
- 4 " gray (60 wht. to 40 blk.)
- 4 " brown.
- 4 " gray (60 wht. to 40 blk.)

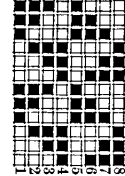
16 threads in pattern; 1920 in warp of 3½ run. No. 13½ reed, 4 threads in a dent.

**FILLING PATTERN.**

- 3 black.
- 3 brown.
- 1 black.
- 1 green.
- 1 black.
- 3 brown.

12 threads in pattern; 66 picks of 4 run.

**WEAVE.**



N. B.—This office has the agency for the patterns of E. LEHMANN, Paris. Packages of 200 assorted samples of the latest Designs sent on receipt of \$7.50.