

Bedroom in "Right and Left" Crackle Weave

BY VEVA N. CARR

HAVING a weakness for plenty of light, living in a sunny climate and desiring at the same time to have a feeling of coolness about my room, I planned my walls and woodwork to be done in a rather deep cream; my spreads in shades of yellow, with curtains, rugs, linens, etc., in shades of green and violet combined with my yellows and creams.

Taking as a foundation the "Right and Left" Crackle Weave pattern illustrated in an article entitled "The New Crackle Weave" by Mary M. Atwater in the January-February, 1931, issue of THE HANDICRAFTER, I worked out the textile designs for my sunny bedroom.

No effort was made to save either time or material in the stringing of the various pieces. The work was planned entirely with a view of fitting each piece to its own particular place and use.

Spreads for twin beds were planned in three strips in order to make a figured border with a center in stripes, the border being done in a deeper shade of yellow than the center stripes.

Sufficient warp should be put on the loom to allow for all waste, and for either an extra bolster, or for additional length sufficient to cover the pillows. Personally, I prefer making the spread long enough to fold back over the pillows, in which case there should be a border on both ends of the spread. Illustration No. 1 shows a sample of the border of the spread.

Since I live in a tropical climate, I preferred a cotton spread and chose a No. 3 Perle cotton for my pattern threads, using a 24/3 Egyptian cotton set at 30 threads to the inch for the warp and tabby.

Using Draft (a), thread a selvage of 1, 2, 3, 4, and three repeats of the pattern, making 424 threads for the border strips. Sufficient warp should be allowed for cutting the two lengths to be woven, and great care taken to exactly match the figures of the center strip.

With the darker shade of yellow (or a very light orange), weave as follows:

(a) Treadle	2-3	6 shots
	1-4	6 "
	3-4	7 "
	2-3	6 "
	3-4	2 "
	2-3	2 "
	3-4	2 "
	2-3	6 "

(a) Treadle	3-4	7 shots
	1-4	6 "
	*2-3	6 "

Repeat from beginning

(b) Treadle	1-2	7 shots
	1-4	6 "
	1-2	2 "
	1-4	2 "
	1-2	2 "
	1-4	6 "
	1-2	7 "

CENTER STRIP

Thread 8 repeats of the pattern, then start at beginning and thread first 92 threads, making a total of 1,212 threads.

With the dark shade, treadle as above for the border (about 14 inches, or until the border is the same width as the side strips). There may be some difference as to the number of shots required, and great care should be exercised to exactly match the figures of the joining strips.

Then, with the light yellow thread, treadle 1-2 for about 80 inches. Make sure in starting the figured border of the dark thread at this point, that it will accurately join the figures of the side borders to which it will be sewed.

RUGS

I chose rug wool in two shades of violet for one of my rugs, and two shades of green for a second, using the dark shade doubled for the pattern wefts and the light shade single for the tabby. A No. 3 light golden tan Perle cotton was my choice for the warp, set at 15 threads to the inch.

Rug (a)

Thread selvage 1, 2, 3, 4	4 threads
Three repeats Draft (a)	420 "
From beginning 1st	87 "
Selvage 4, 3, 2, 1	4 "
	—
	515 "

Treadle 1-2 for about 5 inches; border treadled as Figure (a) of the spread, using about four shots per block; treadle 1-2 for about 45 inches; repeat (a) and treadle 1-2 for 5 inches.

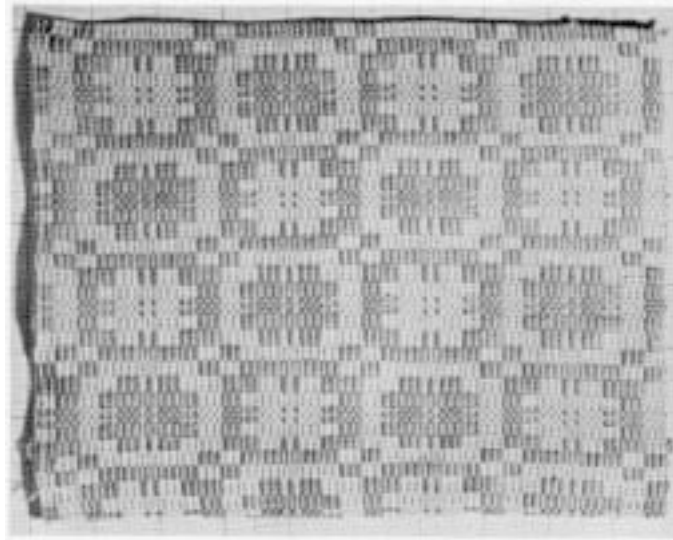


Illustration No. 1. Border for a Bed Spread.

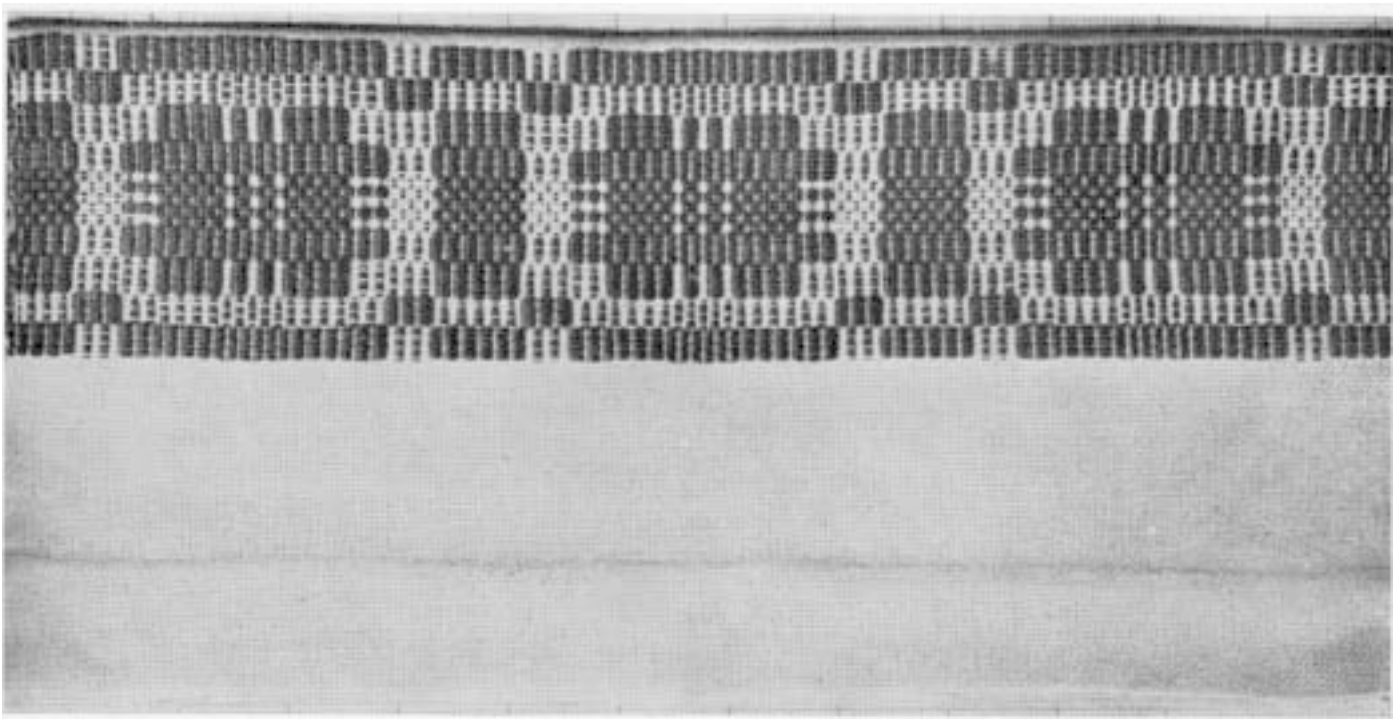


Illustration No. 2. Border for the curtains

Rug (b)

Thread selvage 1, 2, 3, 4	4 threads
Begin at 81 to end of Draft (a)	60 "
Two repeats of pattern	280 "
Start at beginning thread	11 "
	<hr/>
	355 "

repeats of the draft. The border is shown in Illustration No. 2.

Thread selvage 1, 2, 3, 4, 1	5 threads
Pattern 6 times	530 "
Start at beginning 1st	22 "
Selvage 4, 3, 2, 1	4 "
	<hr/>
	561 "

With dark thread weave about 2½ inches plain tabby for hem; about 3 inches of alternating light and dark, and

Treadle 2-3	4 shots dark shade doubled
1-4	4 "
3-4	5 "
1-4	4 "
2-3	4 "

Alternate dark and light for body of rug for desired length, and repeat border and hem.

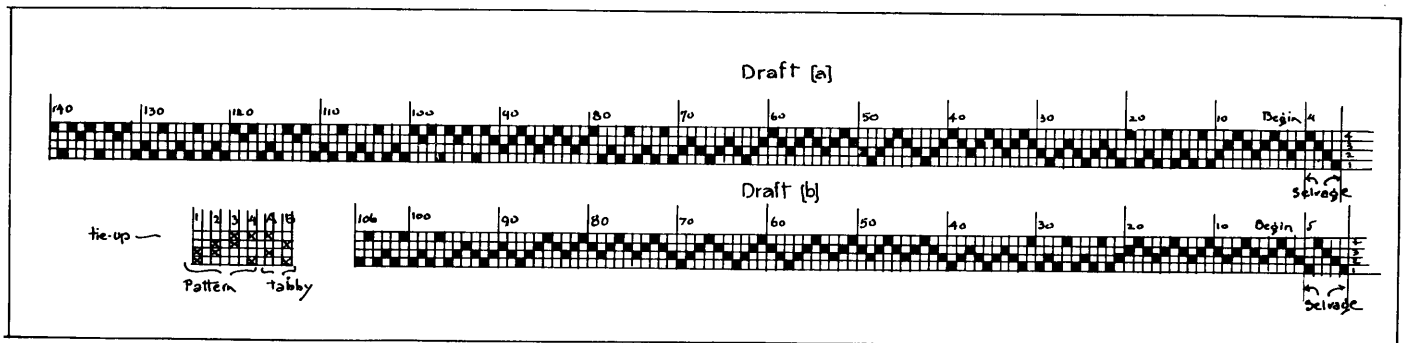
WINDOW DRAPERY

For the window draperies I enlarged the figure somewhat and used but one side of the pattern. Draft (b). By using a linen warp set at 24 threads to the inch, one threading resleyed at 36 to the inch made the dresser cover and some larger towels. Guest towels could be made by using fewer

The curtains, made on a white warp with a very pale yellow No. 10 Perle cotton weft with green borders, were woven with the pattern weft across the second repeat of the draft on one side, thus making a border and plain hem down the center of the window.

Weave in yellow tabby about 10 inches for lower edge and hem allowance, and treadle as follows:

(a) Treadle 2-3	4 shots
1-4	4 "
3-4	5 "
2-3	4 "
3-4	2 "
2-3	2 "
3-4	2 "



(a) Treadle	2-3	2 shots
	3-4	2 "
	2-3	4 "
	3-4	5 "
(b) Treadle	1-4	4 "
	2-3	4 "

For the lower border across the width of the curtain, drop the pattern thread at the beginning of the second repeat, throwing the tabby both ways between the pattern shots. This applies the entire length of the curtain. After the figure is completed, weave the center border by throwing pattern thread across the second repeat of the draft only and treadling from (a) to the end of the directions. Finish with a hem down the center and across the end of the curtain.

DRESSER SCARF

Same stringing as next above, set at 36 threads to the inch, as shown in Illustration No. 3.

With cream-colored tabby, weave about 4 inches plain; two shots of tabby in dark violet; three shots of cream.

Treadle	1-2 in Light violet	1 shot
	2-3 Dark	
	3-4 Light	
	1-4 Dark	
	Repeat three times	
	Cream tabby	3 shots
	Dark violet	2 "
	Cream	10 "
	2-3 Dark violet	8 "
	1-4 " "	8 "
	2-3 " "	4 "
	Reverse to beginning	

Center woven plain for desired length and the border and hem repeated. Finish with inch-and-quarter hem.

TOWELS

Towels were woven in several colors with contrasting borders, some of them being treadled as for the figure in the

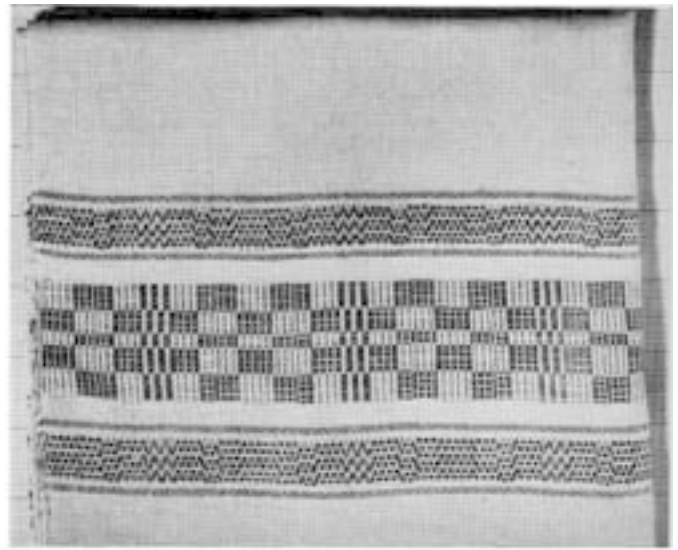


Illustration No. 3. Dresser Cover

spread. (See Illustration No. 4.) A second set was treadled as follows:

Plain yellow for 3 inches, allowing for a 3/4-inch hem.

Tabby	Black	1 shot	
"	Yellow	2 "	
3-4	Black	2 "	
1-4	"	1 "	
3-4	"	2 "	
Tabby	Yellow	2 "	
"	Black	1 "	
"	Yellow	2 "	
1-4	Green	4 "	
2-3	"	4 "	
1-4	"	4 "	Center of border
			Reverse

Weave plain center and repeat border and hem. Cream-colored towels were made with borders in two shades of violet, and in green and violet; green towels with yellow and violet, etc. Many variations as to color and treadling are possible, the treadlings above being given for the illustrated pieces.

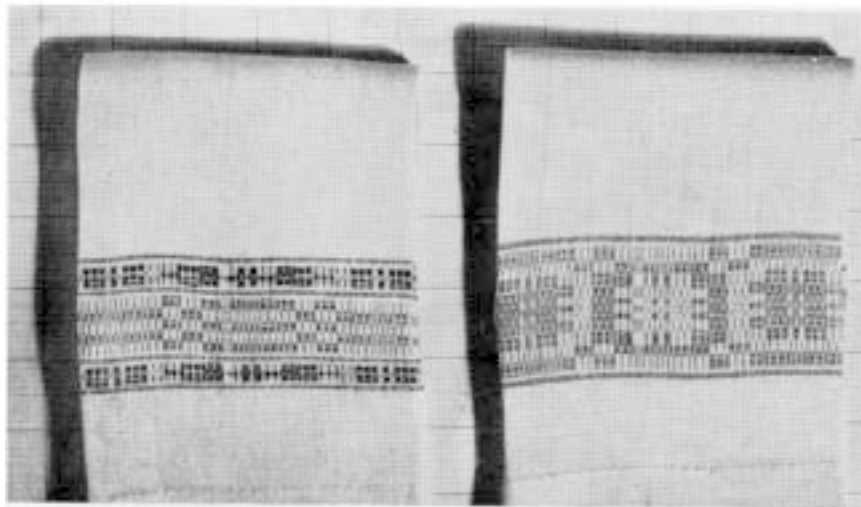


Illustration No. 4. Towels