

# Fashions for May.

Furnished by MR. G. BRODIE, 51 Canal-street, New York, and drawn by VOIGT from actual articles of Costume.



FIGURES 1 AND 2.—OUT-DOOR COSTUME AND CHILD'S DRESS.

WE have neither space nor inclination to present those extravagant fancy costumes which originate in sheer caprice and craving for novelty, however absurd; nor even those authentic foreign modes which can never be adopted by our countrywomen. Our illustrations are confined to those styles which we anticipate will be received with favor here.

For illustration we select an extremely graceful mantilla, called the EUGENIE, composed of white grenadine. It is of very ample proportions, and

owing to the volant not being lined (as is the body with taffeta), it falls with that graceful pliancy peculiar to this fabric. It is impossible that an engraving should do justice to the rich metallic lustre of the inwoven silk garlands, or the beautiful semi-transparency of the fabric. This mantilla is worn scarfwise, low upon the shoulder.

The CHILD'S DRESS is of cashmere, of a delicate pale salmon hue. The *gilet* is of white *poult de soie*, confined by buttons and loops, and is joined to the



FIGURE 3.—BONNET.

surcoat, which is elaborately ornamented, as is also the skirt, by an arabesque design of braid-work. A *ruche* of lace surrounds the neck. The sleeves, puffed, and like the pantalettes—which are worn fuller than formerly—are of needle-wrought cambric. The Hat (which we illustrate opposite on a larger scale) is of Leghorn, trimmed with No. 22 ribbon of white satin, figured. The clumsy rosettes which have been worn so long, are displaced, and the hat is confined by a simple braid. A waving ostrich plume completes the decoration.

**BONNETS.**—Figure 3 is composed of white silk and blonde. The silk is frilled in rows  $1\frac{1}{2}$  inches wide, divided from each other by narrow bands;

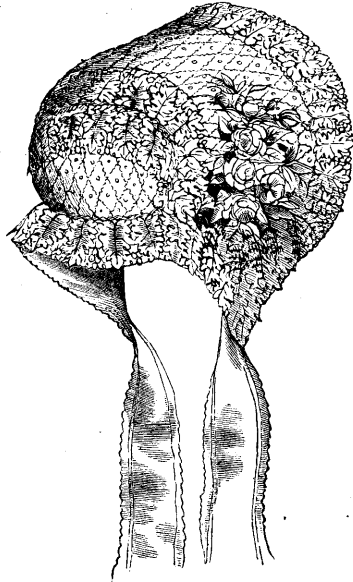


FIGURE 4.—BONNET.

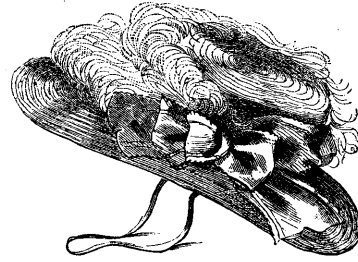


FIGURE 5.—CHILD'S HAT.

these run from the front to the crown, which is covered by blonde lace arranged in a star form. The same lace trims the front. A marabout feather completes the exterior. White jonquils, violets, and sprays of snow-drop, mingled with a few threads of moss, constitute the interior trimming. The



FIGURE 6.—CAP.

snow-drops are so disposed as almost to overarch the head.—Figure 4 is entirely unique. It is composed of hair and Swiss straw, with rows of grape-leaves of embossed and shaded green satin. It is lined with green silk. Groups of pale pink roses, with sprays of the lily of the valley, form the trimming. Inside is a simple *ruche* of blonde, very full upon the cheeks.

**CAPS.**—Figure 6 has a foundation of tulle, with borders of broad blonde, between which are spring flowers. The trimming is of pink satin ribbon.—Figure 7 is of blonde, with black lace edging upon the trimming; this is of corn-color, relieved at its edge by a velvet line.



FIGURE 7.—CAP.