

EVOLUTION OF A DESIGN

(this article originally published in somewhat different form in 'Needle Arts', Vol.XV, No. 1, and reprinted in the present version in 'Lace,' Number 41. It is reprinted here with the kind permission of the editors of 'Lace'.)

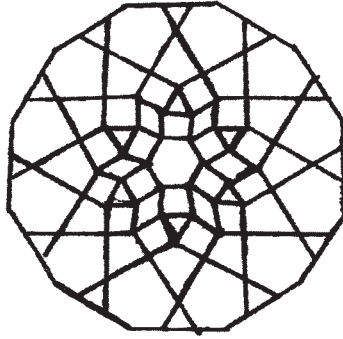


Fig. 1
An Arabic Hexagon
(Plate VII, from Bourgoïn, J. "Arabic Geometrical
Pattern and Design." Dover Publications, 1973.)

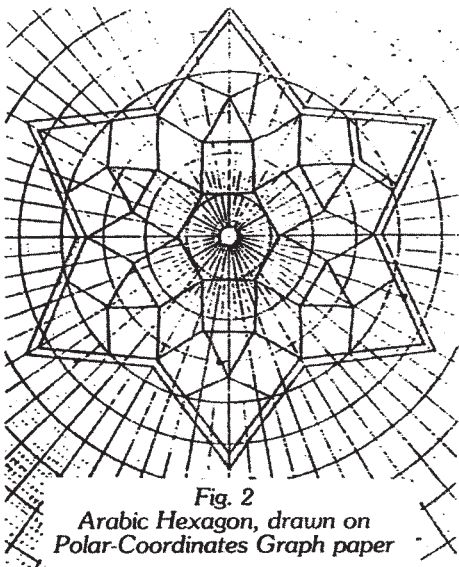


Fig. 2
Arabic Hexagon, drawn on
Polar-Coordinates Graph paper

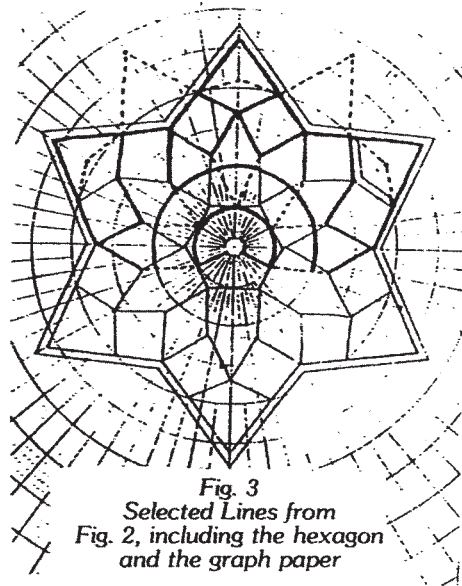


Fig. 3
Selected Lines from
Fig. 2, including the hexagon
and the graph paper

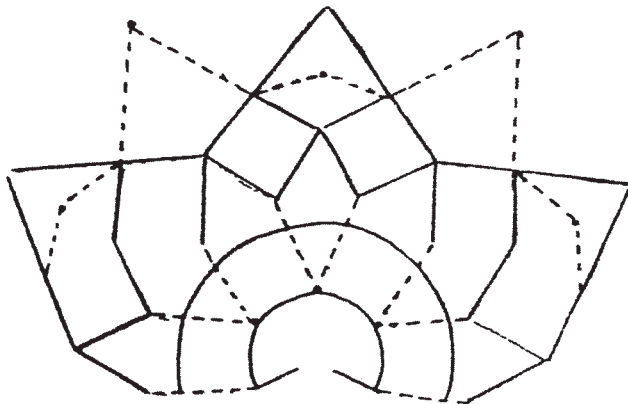


Fig. 4
The same as Fig. 3
with unused lines removed

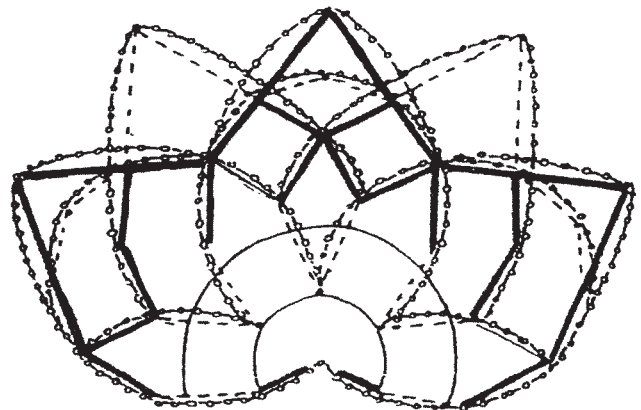


Fig. 5
The lines of Fig. 4 softened
by curving them slightly.

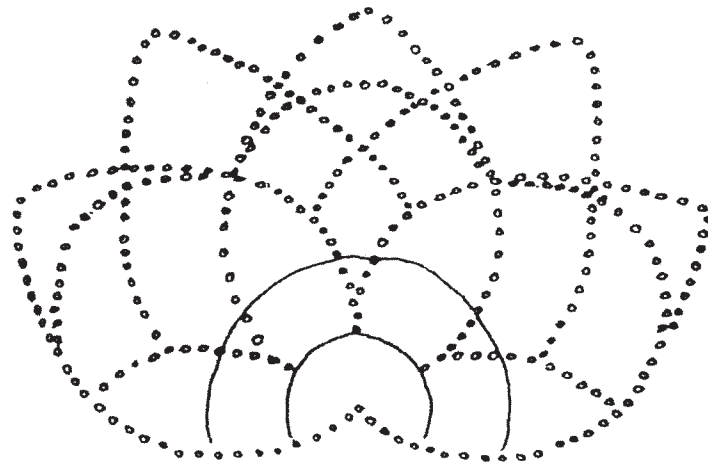
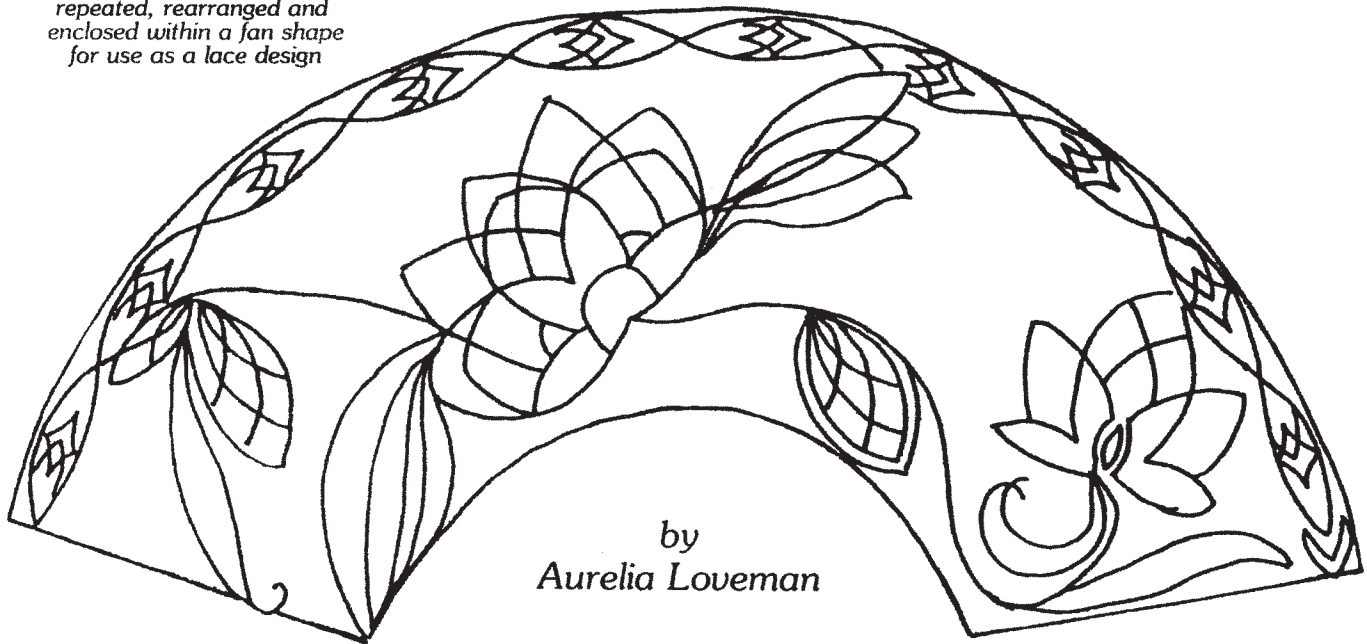


Fig. 6
The curved lines of Fig. 5 retained,
all others deleted: leaving
a rose? a lotus? in any case,
a stylized flower

Fig. 7
Selected lines from Fig. 6
repeated, rearranged and
enclosed within a fan shape
for use as a lace design



by
Aurelia Loveman

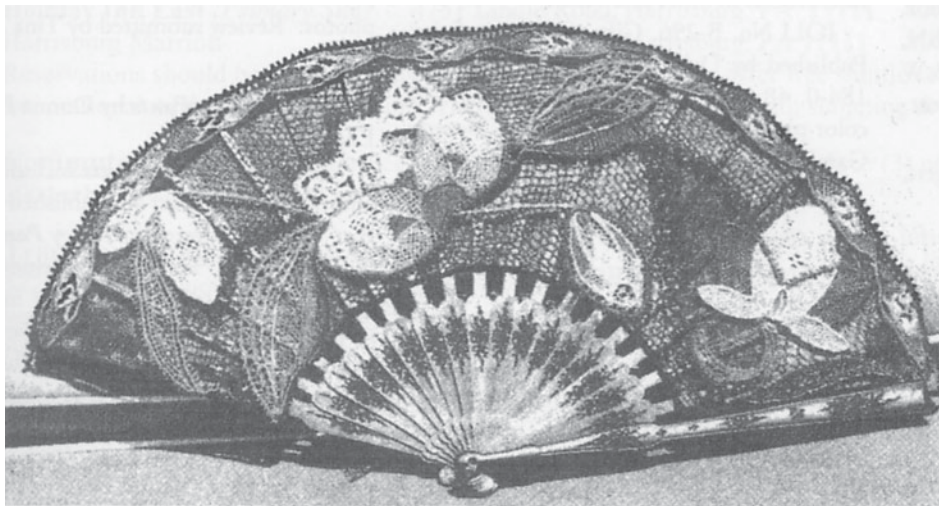


Photo:
Cynthia Voysey

Fig. 8
A needlepoint fan worked from the design of Fig. 7