

THE WINTER GOWNS AND WRAPS

By Madame Pauline

ILLUSTRATIONS FROM DESIGNS BY THE AUTHOR

THE novelty gown of brown over a velvet petticoat, which is shown in illustration, is made with a circular skirt draped in a lengthwise-shaped plait on front of left hip, with very slight wrinkled effect in the front.



NOVELTY GOWN OF BROWN



Another double plait starting in centre back to right falls in folds, with two plaits on left side of back arranged in double shawl effect. The bodice has a tucked front of cream satin, with shaped ruffle coming out from two velvet revers. The collar and girdle are of plain velvet. The sleeves are small, with circular velvet ruffles at armholes, and flaring cuffs, all faced with cream satin. This gown will require eight yards of cloth and three yards of the satin and velvet.

THE house gown of blue poplin in illustration is made with a bell skirt, with circular flounce tucked in clusters of five tucks graduated with flounce and outlined at the top with appliqué designs in black



HOUSE GOWN OF BLUE POPLIN

lace. The bodice is tucked in clusters forming a point on each shoulder and over the bust, where it is cut away around the armhole, and in graduated square in front, which is filled in with crosswise tucks and white lace insertion. The sleeves are tight, formed of bunched tucks and trimmed at the wrists with appliqué lace. Loops of black ribbon are on both shoulders and at the neck, and also form the girdle. One should be very particular in cutting the bell skirt. It should be placed upon the person who is to wear it and correctly shaped around the lower edge, as this model is liable to sag at the sides if care is not exercised. This gown will require eight yards of poplin, four of insertion, and three of ribbon. This design might be developed in any one of the new colors. The one described will prove particularly becoming to a blonde.



WINTER GOWN OF MULBERRY CLOTH

THE evening wrap of light green velvet in illustration is lined with white satin and cut flaring with shaped flounce finished with an ermine band at the top. The cape collar is closely fitted, bordered with lace and fur, and



VELVET EVENING WRAP

cut with revers turning over in front to meet flaring collar, which is bordered inside with ermine. Less elaborate material may be used to develop this cloak. The model described is one of great elegance, and intended for a wealthy woman.

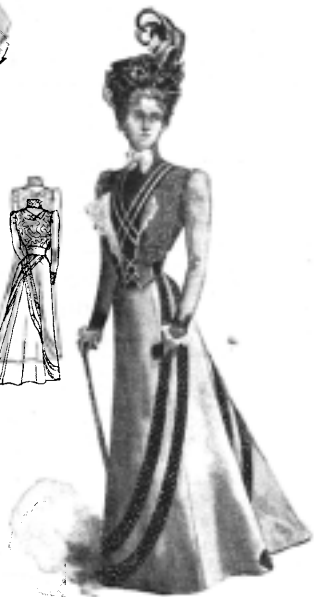
THE wedding gown in illustration is made of ivory satin duchesse with a close-fitting skirt *en train*,



A WEDDING GOWN

the upper edge is cut away in scallops and caught to lower edge with oval pearls. The bodice is plain, high in the neck and trimmed with two shaped ruffles at the left side and a draped piece at the right. The girdle is of pearls, the collar of lace and pearls. The sleeves tight and flaring at the wrists. The veil is arranged in a point over the face and draped slightly with orange-blossoms. Use sixteen yards of satin duchesse and four pieces of the lace.

THE winter gown of mulberry cloth of twin screw texture in illustration is made with a skirt which fits closely and is trimmed with graduated folds of velvet of a darker shade with polka dots of lavender. The folds start on the left hip diagonally across front gore, and border the edge of skirt also up to centre back, crossing the other side in double lattice work, and ending in centre of left side at the foot of the skirt. The vest is of plain velvet with lavender ribbon crossings. The waistcoat is faced with lace. The jacket is braided. A velvet collar with lace bow finishes the neck. The sleeves are finished with a rounded effect and have fancy cuffs. This gown will require six yards of cloth and three of velvet.



The hat to be worn with this gown is of brown velvet with a high, embroidered crown. It is trimmed with shaded brown wings and steel ornaments, which are turned back in the front. This design might be developed in any one of the new shades. It will be found particularly suitable for women who are slender.



WRAP OF BROCADE

THE evening wrap of light blue and white brocade in illustration is lined with violet. It is cut circular, with flounce around the edge, which is graduated in front and with two plaits in the back. Puffings of pinkish-violet silk, and yoke of the same formed of three plaitings, are set on the shaped collar piece, which is edged with a plaiting standing at the neck, and fastened in front with white ribbon. A full ruche of silk also borders the yoke. Any desired color may be used. This wrap will require ten yards of brocade and five of the plain silk.



EVENING GOWN OF BLACK LACE



trimmed with a shaped ruffle extending up the front gore to within seven inches of the waist-line, edged with narrow Valenciennes lace, which at



CALLING GOWN OF BROADCLOTH

a long-sleeved guimpe of figured lace. A corsage of lace embroidered in steel encircles the waist, and shaped in points extends to the neck, which effect is continued down the skirt from the waist. The collar is formed of tiny lace ruffles; the wrists are trimmed in the same way.



GOWN OF BLUE VENETIAN CLOTH



The hat to be worn with this gown is of brown velvet with a high, embroidered crown. It is trimmed with shaded brown wings and steel ornaments, which are turned back in the front. This design might be developed in any one of the new shades. It will be found particularly suitable for women who are slender.

THE coat and skirt of the blue Venetian cloth gown is braided with black in graduated rows. The coat is long, tight-fitting, slightly double-breasted, and buttons over the left side, which is braided. The revers on the right side is braided, with one of velvet underneath. The high fitted collar is braided and faced with velvet. The sleeves are coat shape and trimmed to match the coat. Six yards of cloth, three-quarters of a yard of velvet and one piece of braid will be required for this gown, which is a particularly stylish one.