

	Transit.		Stock, end of Month.	
	1889.	1888.	1889.	1888.
January	8,297	6,718	5,706	3,939
February	8,992	7,095	8,291	12,858
March	8,810	8,817	4,846	18,774
April	12,127	9,969	9,196	23,218
May	12,835	6,892	9,297	17,722
June	11,131	3,127	13,836	21,953
July	4,854	3,942	15,848	9,707
August	2,530	1,616	5,449	3,907
Sept'mbr.	1,889	1,243	4,159	7,157
October	876	690	2,982	615
Novemb'r.	693	337	365	3,997
Decemb'r.	4,000	2,890	2,700	6,734

76,174 53,436

**BERLIN.**

Apart from a few transactions in wools, the wool market is still very quiet, and neither in home nor in foreign wools is business more than nominal. The lull is, however, regarded as merely temporary, and a hopeful tone prevails, especially those concerned with German wool. The increased demand for the latter for some time past is a noteworthy feature, which there is every reason to expect will continue. The yarn trade is rather brisker. Three and four fold zephyrs and shoddy and mungo kinds are in fair request at firm prices; but inquiries for mohair rovings are unimportant. The improvement in ready made goods continues. Satisfactory first reports have been received from travellers, and there is a good demand for jackets. Orders for these goods from Holland are chiefly for the sack shape in check material. In ulsters, business is improving, and long black paletots are being a good deal sold. Several English wholesale buyers have lately been in the market.

**CHEMNITZ.**

Hosiery manufacturers are at present busy on spring orders, but in new business there is not a great deal doing. Plain stockings are in fair demand, but striped kinds are somewhat neglected. In socks some important orders have been received. Knitted hosiery is in small request, and the export to America suffers, owing to a great quantity of these goods now being manufactured there. In gloves a steady business is doing on the whole. The export demand is, however, disappointing.

**FOURMIES.**

Although business is not quite recovered from the flatness which it has of late exhibited, there is an improvement to be noticed. The new season's trade in piece goods seems to be opening out, and more orders have been booked during the past week. Some tardiness in the execution of old contracts having been induced by an abundance of orders towards the end of last year, deliveries are now being actively pushed forward, and every endeavour to overtake them is being made by manufacturers. The yarn trade is quiet. There appears to be a certain reticence in placing new business, consumers entertaining the belief that more advantageous terms will ultimately be obtained. Spindles are kept well engaged on old orders.

**LILLE.**

Prices for Douai and Bergues flax are well maintained, and a fair average business has been done during the week. The Flemish markets are now well supplied. The demand is active and prices show no notable change from last week. In Rotterdam 900 bales were offered for sale, and all found buyers at late rates. French and German spinners are eager purchasers at present, but Ireland sends very few orders, having already operated largely in Belgium in blue flax. In the tow branch the business done is of a from hand-to-mouth character at last week's rates. The linen yarn market is active, and a fair average business has been done at recent prices. The fine counts are still in great demand. The piece goods branch is quiet, but where business is done, it is at late rates. Hemp is rather firmer in prices for the home and Italian sorts, whilst in other produce no sales are reported.

**LYONS.**

The velvet trade is showing but little animation. Transactions in the lower descriptions with Schappe pile have been very few, and the richer qualities with silk pile are disposed of only in small assortments. In striped velvets there is not much doing; figured goods sell moderately well. Finishes are neglected, or selling at unsatisfactory prices. The demand for crapes continues rather active, especially for crapes de Chine and crapes Francais. Important orders have been placed during the week in the light fancy shades. Black English crapes meet a regular demand both from Paris and from foreign countries. In the silk piece goods market the demand is concentrated upon the low articles. Rich all-silk makes are selling only in small quantities. This is the case especially in Merveilleux. Surat

is the only silk article which has a large sale. Bengaines, mixed with wool, are ordered in black and colours for Paris; and satins, with cotton back, are selling rather freely for foreign consumption. Piece-dyed satins are being produced in large quantities, and disposed of at satisfactory prices. Printed pongees meet with less inquiry, but piece-dyed twills continue in good demand. There is also more doing in piece dyed damas, but yarn-dyed figures sell only in low makes for trimmings or ties. The raw silk market has not been very active during the week, but prices of all descriptions keep very firm. Asiatic sorts are much favoured, and prices show an upward tendency, stocks not being large.

**ROUBAIX-TOURCOING.**

As is usual at the beginning of the year, business has been again very quiet during the week, and most firms are still busy with their yearly balance sheets. Manufacturers are now engaged in delivering the summer season's goods. The beginning of the winter season has not been very encouraging so far. Travellers have, as yet, sent very few orders. This is partly caused by the high prices which makers are obliged to ask, on account of the high rates of raw material. The yarn trade keeps fairly active. The top market is quiet. Spot sales are small, and prices nominal as follows:—Superior Australian tops, *fs.* 7.20 to *fs.* 7.40 (31d.-32d. per lb.) Prima Buenos Ayres, *fs.* 6.35 to *fs.* 6.50 (27d.-28d. per lb.) Futures are quiet. Slight fluctuations have taken place, but the week closes firm.

On the 5th inst., the cloth factory of Carl Emisch and Sons, in Luckenwald, was completely destroyed by fire.

The cloth factory of Langenwald, formerly belonging to Muller, in Schwiebus, was burnt down on the morning of the 1st.

On the 3rd inst., a fire broke out in the worsted yarn factory in Crimmitschau. After considerable efforts the fire was localised.

From the 10th inst., the prices of jute goods will be 2 per cent. higher, and a further rise is expected. The price of raw jute also is rising.

A serious fire, which broke out at Lyons, on the premises of M. Ulzoss Pilla, a large silk manufacturer, did damage estimated at £24,000.

At a meeting of manufacturers of woollen textiles, held in Leipzig, it has been decided to organise a grand exhibition of the wool industry at Berlin in 1891.

The committee of the Linen-yarn Spinning Company, formerly Renner, has decided to recommend to the approaching general meeting a dividend of 7½ per cent., against 6 per cent. for 1888.

There are, in the Province of Turin, eleven silk weaving establishments, producing pure and mixed silk tissues and velvets. They have a total of 269 plain hand-loom and 210 Jacquards, and employ 731 persons.

Mr. A. F. Beaufort has been elected president of the Bombay Chamber of Commerce, in place of the Hon. Forbes Adams, who is said to be leaving Bombay. Mr. L. R. W. Forrest (Killick, Nixon and Co.), has been elected deputy chairman.

The branch of the large Brunswick Joint-stock Company for the manufacture of jute and flax in Vecheide has been burnt down. The whole stock of yarn and the machinery were destroyed. The weaving-factory and the boiler-house were saved. The branch occupies 500 workers.

A time-bargain market for tops has now been opened at Rheims. This undertaking will undoubtedly give more expansion to trade, and tend to develop the importance of this centre. So far the innovation has met with hearty support, and it seems likely that, as buyers become more accustomed to the modern method of dealing, operations will correspondingly extend.

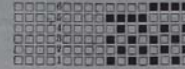
**GERMAN DIVIDENDS:—** Gladbach

Cotton Spinning Co.	10	per cent.
Ravensberg Spinning Co. in Bielefeld	6	" "
Viersen Joint-stock Spinning Co.	9	" "
Spinning Co. "Vonvarts," in Bielefeld	11	" "
Cloth factory of Aix-la-Chapelle—about	7	" "
Langensalz Cloth Factory	15	" "
	5	" "

**Designing.**

**COTTON GOODS DESIGNS.**

In this issue we commence the publication of designs for cotton goods of various descriptions. As the designs are from the pen of an expert designer well known in the trade we commend them to the attention of our South Lancashire readers engaged in the coloured section of the trade.



*Pegging Plan, No. 1 and 3, 5 to Round.*  
**FANCY DRESS STRIPES IN COTTON.**

**DESIGN 1.**

Reed 72, 2 in a dent or 72 ends per inch. 45 picks, 21's warp, 20's weft.

One shuttle, either black, dark blue, dark brown or chocolate, warp good, bright colours, and white well bleached, warping and draft. 6 black, 1 orange, 1 black, 1 orange, 1 black, 1 orange. 6 black, 2 of white all on plain shafts. 4 white, 2 in a heald on 6th shaft, 5 white plain shafts. 2 black plain shafts, 2 orange, 2 in a heald on 6th shaft. 4 white, 2 in a heald on 5th shaft, 2 of orange, 2 in a heald on 6th shaft, 2 black plain, 6 white plain. 4 white, 2 in a heald on 6th shaft, 2 white plain shafts, 51 ends in all complete patterns.

**DESIGN 2.**

Three white, 2 black, 3 white, 6 black and white print, large irregular black, nearly all black, 3 white, 3 black; 3 white, 6 black and white print, 3 white, 2 black; 12 white, on all plain shafts; 4 white, 2 in a heald on 6th shaft, 2 black plain; 2 orange, 2 in a heald on 5th shaft, 2 white on 6th shaft; 2 orange, 2 in a heald on 5th shaft; 2 black plain, 4 white, 2 in a heald on 6th shaft; 12 white, 2 black, 3 white, 6 black and white print; 3 white, 2 black, 3 white, 6 black and white print; 3 white, 2 black, 3 white, 6 black, 1 orange, 1 black; 1 orange, 5 black, 1 orange, 1 black, 1 orange, 5 black, all on plain shafts; 2 dark blue, 2 light blue, 2 in a heald on 6th shaft; 2 orange, 2 in a heald on 5th shaft, 2 light blue; 2 white, 2 light blue, 2 in a heald on 6th shaft, 2 orange; 2 in a heald on 5th shaft, 2 light blue, 2 dark blue, 2 in a heald on 6th shaft; 5 black, 1 orange, 1 black, 1 orange, 5 black, 1 orange; 1 black, 1 orange, 5 black, 168 ends complete pattern.

**NEW DESIGNS.**

**WORSTED COATINGS.**

The use of silk twists in the better classes of coatings and trouserings is very prevalent, although a decided obstacle to its use is the fact that the silk soon wears off; but the advantage gained in the richness and beauty of the fabric fully compensates for this.

Design 34 will give good results either with silk twists or ordinary yarns. The following is a suitable sett:—

Warp.		Repeat for with fine silk 48 threads.
4	2/50's worsted, twisted with fine silk.	
8	2/40's worsted	
4	2/50's worsted, twisted	
12	2/40's worsted	
4	2/50's worsted, twisted with fine silk.	

72 ends per inch.  
*Weft.*  
Applied the same as warp.  
72 picks per inch.

The following warp will also give a good effect:—

Warp.		Repeat for with fine silk 48 threads.
4	dark brown worsted	
8	dark blue worsted	
4	dark brown or green worsted	
12	dark blue worsted	
4	dark blue worsted	

**WOOLLEN TROUSERINGS OR SUITINGS.**  
Design 35 is useful for this class of material. The following is a suitable warp:—



*Warp.*  
 16 lbs. of 20 sk. white,  
 8 " " 20 sk. mid-grey,  
 8 " " 20 sk. dark grey,  
 8 " " 20 sk. black,  
 8 " " 20 sk. mid-grey,  
 10's reed 4's.

*Weft.*  
 8 picks of 20 sk. black,  
 16 " " 20 sk. mid-grey,  
 40 picks per inch.

Gradation in patterns like this will usually give the best result since detail is furnished with the weave. Browns, olives, &c., used either together or separately, are suitable colourings to employ.

Design 36 is for another type of woollen suiting or trousering. Mohair threads in various classes of woollen goods have been received very favourably, and it seems probable that patterns of this type will be more and more sought after. Good results may be obtained by simply introducing the lustre yarn instead of an ordinary thread, but in order to obtain the full benefit of the yarn some other method should be adopted, such as that demonstrated in Design 36. The mohair threads and picks are here put in in crosses, and if each be followed through the design, it will be noticed that about two-thirds of each thread is on the face, and one-third on the back. The following is a suitable sett, &c.:—

*Warp.*  
 16 lbs. of 20 sk. dark blue,  
 1 " " 15's black mohair,  
 2 " " 20 sk. dark blue,  
 2 " " " dark brown,  
 7 " " " dark blue,  
 2 " " " dark brown,  
 2 " " " dark blue,  
 1 " " 15's " black mohair,  
 8 " " 20 sk. dark blue,  
 12's reed 4's.

*Weft.*  
 20 sk. dark blue, and  
 15's black mohair,  
 48 picks per inch.

The design is not completed, so that it may be applied as desired. If special arrangements are made to shew up the mohair yarn, it may be about the same size as the yarns forming

the body of the cloth; but if no special arrangements are made, it should be rather thicker.

If design 36 is crossed in the same way that it is warped, the reverse twill across the piece should be broken and the upright reversed twill continued unbroken, since the decided stripe should, as a rule, run with the warp.

This design also demonstrates the best system of spotting, viz., the spotting warp yarn should be up over the ordinary picks and be tied when the two threads on each side are up; the weft spotting yarn should shew over the threads and be down between the picks which rise on either side of it.

DRESS FABRIC.

Design 37 is suitable for either silk, worsted, or cotton dress goods. As a worsted, the following sett is suitable:—

*Warp.*  
 2/80's worsted,  
 96 ends per inch.

*Weft.*  
 50's worsted,  
 90 picks per inch.

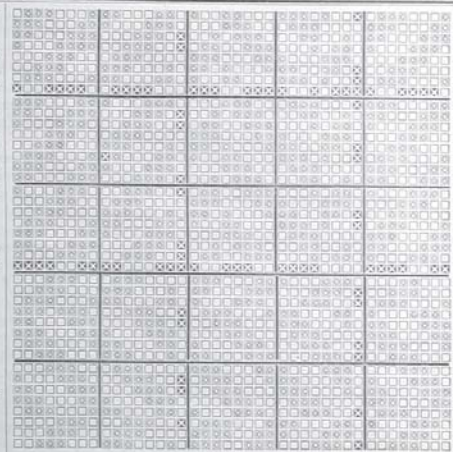
As a cotton warpan lustre weft, the following sett is suitable:—

*Warp.*  
 2 80's cotton,  
 40's reed 2's.

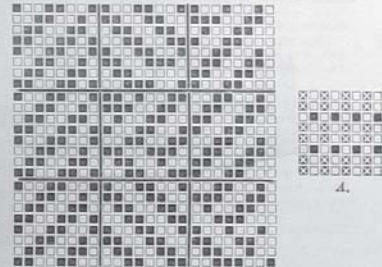
*Weft.*  
 18's mohair or silk,  
 80 picks per inch.

The design would be better extended to double the size, and if the latter system be adopted a ground like A should be used, every two picks of lustre yarn being followed with a pick of cotton yarn, which interweaves plain throughout the piece, ground and figure included.

ERRATUM.—Owing to an error by our printers in our last week's issue, Fig. 4 was wrongly put together. The upper half of the figure requires to be reversed, and the top brought to the bottom and placed against the top of the lower half, which is correct. We much regret this mistake, and have made special arrangements to avoid any such in future.—Ed. T.M.

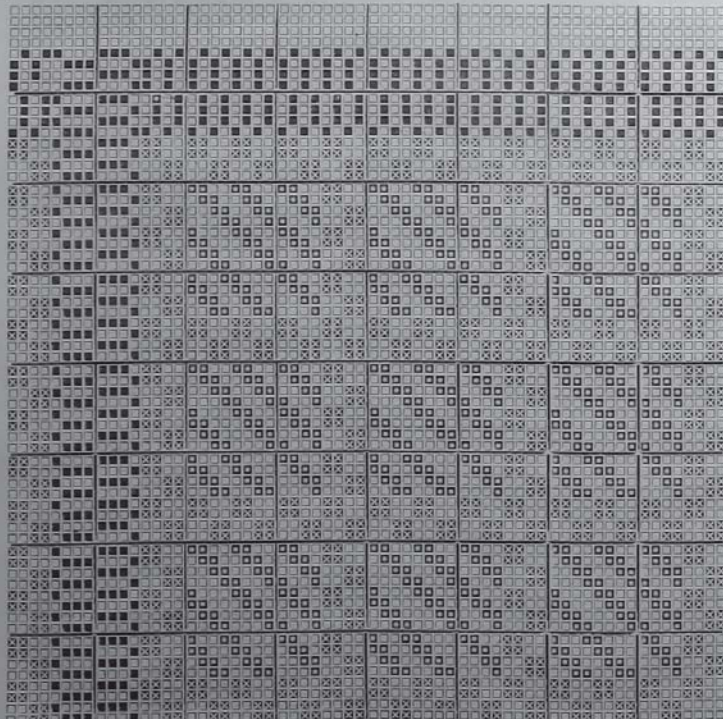


Design 36.

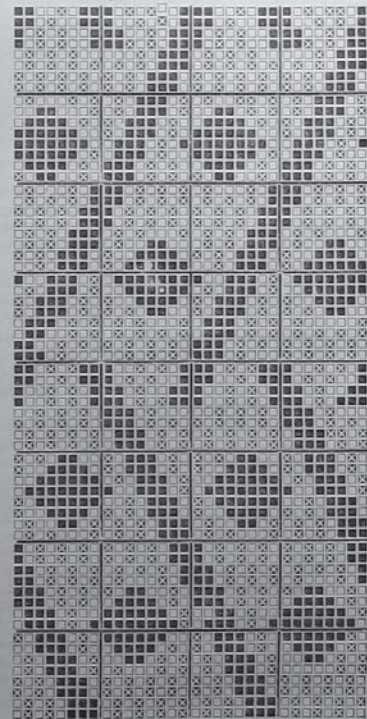


A.

Design 35.



Design 34.



Design 37.