

The Construction of Weaves

By E. Bitner

Fig. 527. Similar to Fig. 525. Pattern, 16x16.

Fig. 528. Warp, 2 dark 1 light. Filling, 2 dark 2 light. Pattern 6x4.

Fig. 529. Warp pattern, 2 threads; filling pattern 12 threads. Pattern 2x12.

Fig. 530. Pattern 8x8.

Fig. 527.

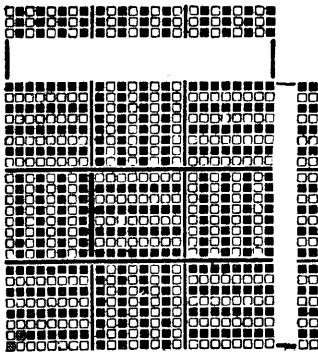


Fig. 528.

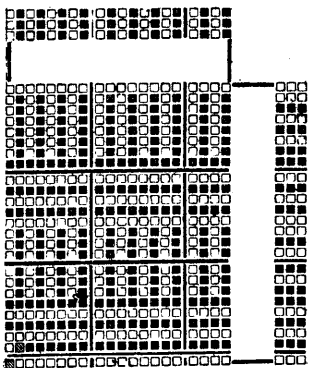
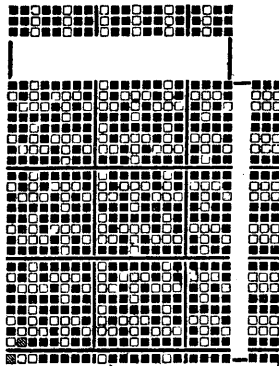


Fig. 529.

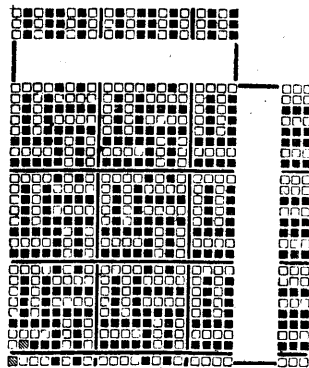


Fig. 530.

Fig. 531. Plain weave offset every 8 threads. Warp and filling, 1 light 1 dark.

Fig. 532. Plain weave offset at certain places. Warp and filling, 1 light 1 dark. Effect is a combination of warp and filling stripes.

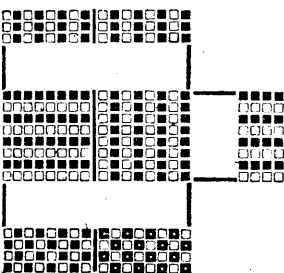
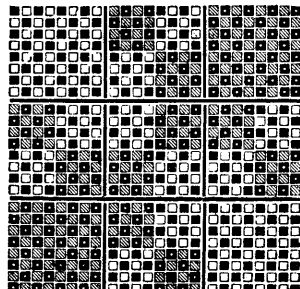


Fig. 531.



533b.

Figs. 533. Motif which in Fig. 533*l* is enlarged 4 times.

Fig. 533*b* shows a plain weave offset to correspond with the enlarged motif. Fig. 533*c* shows the color effect produced by Fig. 533*b* with a warp and filling pattern 1 light 1 dark. It is not necessary to make these separate sketches, which are given here to make the construction clear. The draft can be completed on one sketch.

COLOR EFFECTS ON PLAIN WEAVE

In forming color effects on a plain weave the filling pattern is greatly simplified by arranging the warp and filling 1 light 1 dark. The weave is then offset in accordance with the desired figure, very attractive effects being obtained in this way; Fig. 531 shows a stripe effect obtained in this way; Fig. 533, a figured effect.

COLOR EFFECTS ON TWILL WEAVES

A great variety of weaves can be used to advantage in producing color effects. Longitudinal, horizontal and figured

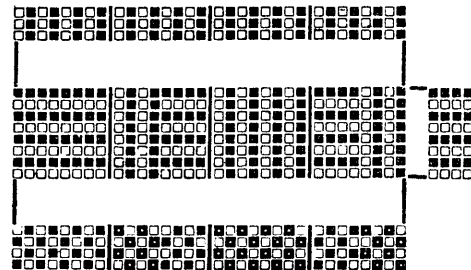


Fig. 532.

effects can be obtained, also longitudinal and horizontal stripes combined in the same pattern, Figs 534 to 548.

The twill is shown in the lower lefthand corner of each of these drafts; the color effect is shown in the remainder of the draft.

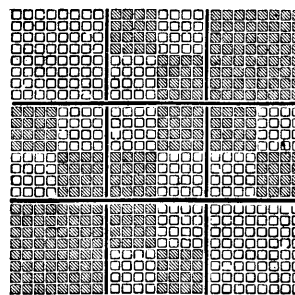


Fig. 533a.

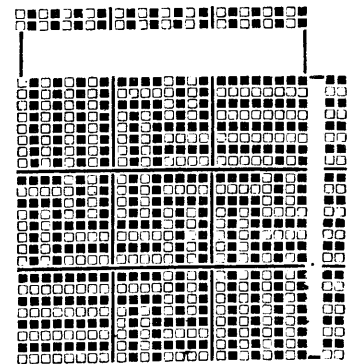


Fig. 533c.

Figs. 549 *a* to *d* and 550 *a* to *f* show color effects obtained by combining warp and filling twills in the same pattern.

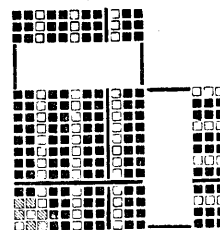


Fig. 534.

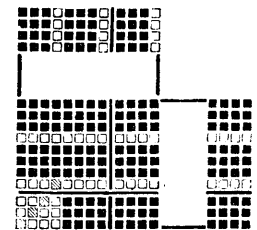


Fig. 535.

Fig. 534. 3-leaf warp twill; warp and filling, 2 dark 1 light.
Fig. 535. 4-leaf filling twill; warp and filling; 3 dark 1 light.