

CROCHETING.—No. 68.

ABBREVIATIONS USED IN CROCHETING.

l.—Loop.	h. d. c.—Half-double crochet.
ch. st.—Chain stitch.	tr. c.—Trebble crochet.
s. c.—Single crochet.	p.—Picot.
d. c.—Double crochet.	sl. st.—Slip stitch.

Repeat.—This means to work designated rows, rounds or portions of the work as many times as directed.

* Stars or asterisks mean, as mentioned wherever they occur, that the details given between them are to be repeated as many times as directed before going on with the details which follow the next *. As an example: * 6 ch., 1 s. c. in the next space and repeat twice more from * (or last *), means that you are to crochet as follows: 6 ch., 1 s. c. in the next space, 6 ch., 1 s. c. in the next space, 6 ch., 1 s. c. in the next space, thus repeating the 6 ch., 1 s. c. in the next space, *twice* more after making it the first time, making it *three* times in all before proceeding with the next part of the direction.

MAT FOR TOILET BOTTLE.

FIGURE No. 1.—This little mat is especially adapted to the toilet bottle and is made of crochet cotton and edged with yellow silk.

Begin as follows: Make 6 ch. and join. Then 2 ch., 2 d. c.

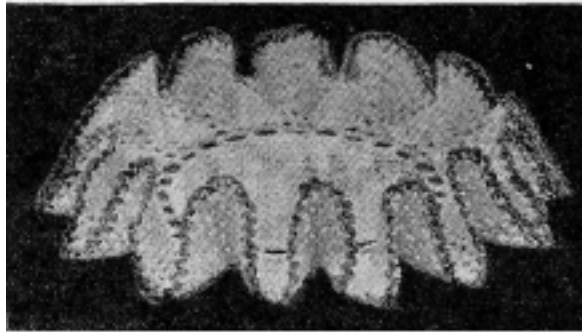


FIGURE No. 1.—MAT FOR TOILET BOTTLE.

into each stitch of chain, and join to first d. c. with slip stitch. Pick up the back half of the stitches only, commencing each round with 2 ch. Continue the rounds, increasing the d. c. as often as necessary to keep the work perfectly flat, and join the last d. c. of each round to the first d. c. of the preceding round with a slip stitch. When the mat is of the desired size divide the edge off into 28 spaces. The one illustrated is made as follows: 2 ch. for first d. c., 5 ch., skip 4 stitches, 1 d. c. in 5th st., and so on around the mat.

Second round.—3 ch. for first d. c., 7 d. c. in first space, * 2 ch., 1 d. c. in next space, 2 ch., 8 d. c. in the next open space, *, repeat between the stars, joining last two chains, to first d. c. in the first space.

Third round.—1 d. c. in each of the 8 preceding rounds, 2 ch., 1 d. c. in first space, 2 ch., 1 d. c. in second space, 2 ch., 1 d. c. over each of the 8 d. c. of previous round, join end as before.

Fourth round.—* 7 d. c. over the 8 d. c., 2 ch., 1 d. c. in first space, 2 ch., 4 d. c. separated by 2 ch., each in second space, 2 ch., 1 d. c. in third space, 2 ch., *. Repeat between the stars for entire round.

Fifth round.—* 6 d. c. over preceding 7 d. c., 2 ch., and 1 d. c. in each space till the center one is reached, into which put 4 d. c., with 2 ch. between each, then 2 ch. and 1 d. c. in each space till the 6 d. c. over 7 d. c. are reached, then repeat from *.

Sixth round.—* 5 d. c. over 6 d. c. of previous round, 2 ch. and 1 d. c. in each space till the middle space, into which place 2 d. c., with 2 ch. between each, 2 ch., 1 d. c. in each space till 5 d. c. over 6 d. c. are reached, and repeat from *.

Seventh round.—* 4 d. c. over 5 d. c. of former round, 2 ch., and 1 d. c. in each space to middle space, into which place 4 d. c., with 2 ch. between each, 2 ch., 1 d. c. in each space till 4 d. c. over 5 d. c. are reached; repeat from *.

Eighth round.—* 3 d. c. over 4 d. c., 2 ch., and 1 d. c. to middle space, then 4 d. c., with 2 ch. between each, 2 ch., 1 d. c. to the 3 d. c. over 4 d. c., and repeat from *.

Ninth round.—Join the silk, 4 ch., slip-stitch into each open space around the entire mat.

DESIGN FOR CROCHET AND BEAD JERSEY OR WAIST.

FIGURE No. 2.—A very handsome waist may be made of the crochet work shown by this engraving. The latter does not convey a very good idea of the beauty of the net-work, but those who know how pretty cut jet is will be able to imagine the effect.

The waist from which this sample was taken had the body of yellow satin overlaid with the net-work, which was made by the wearer in a comparatively short time. The sleeves were of plain black satin, with cuff decorations of the yellow overlaid with the net-work. The collar matched the cuffs and was handsomely finished with loops and frills of black satin ribbon, and a black satin girdle was around the bottom of the bodice.

The net-work may be made in two or three sections—a whole front and back or two fronts and a back, the bodice in the first instance closing on the shoulder and under the arm, and in the second down the center of the front.

Use a waist pattern of the correct size and crochet each of the sections above mentioned of the same shape as the pattern but a little smaller, as the net-work must stretch to the actual size desired in order to preserve its smoothness. It must be understood that the darts must be pinned or basted in the pattern before the net-work is begun, and that the back seams must also be pinned or basted as the net-work back is to be whole and must meet the fronts under the arms.

It may be necessary, in fitting the waist, to cut the net-work a little where it stretches too much, but this will not injure it.

It is impossible to state the quantity of beads and silk required, as the sizes of waists, materials and the crochet work itself will vary so much. Experiment only will decide the matter. Buy several bunches of beads, making sure you can get more of the same kind, and several spools of silk; work out the back or one front and you can easily estimate the whole quantity required. The cost will probably not exceed ten dollars and may fall much under that. Cut beads are quite expensive, but, of course, are much handsomer than pressed beads, which are very reasonable in price. To make the net-work, proceed as follows:

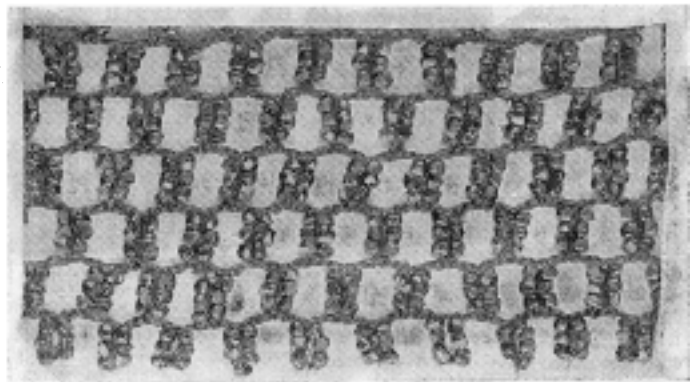


FIGURE No. 2.—DESIGN FOR CROCHET AND BEAD JERSEY OR WAIST.

Use round jet beads and heavy twist or very fine crochet silk and a hook suitable for the silk. String the beads on the silk.

First row.—Make a chain of 5 sts., slip up 6 beads and draw the silk beyond them through the loop on the needle; this forms a loop of the beads; continue with the 5 ch. and a loop of beads until the strip is of the desired length.

Second row.—Make 7 ch., fasten in the middle of the loop

underneath with a s. c. * Make 2 ch., slip up 6 beads and close the loop as described, 2 ch., fasten in the center of next loop with a s. c., and repeat from * across the row. Continue to work back and forth until the piece is as wide as desired, and leave the loops free in the last row for the edge finish. If the work is to be pointed at the ends, widen in the usual manner by

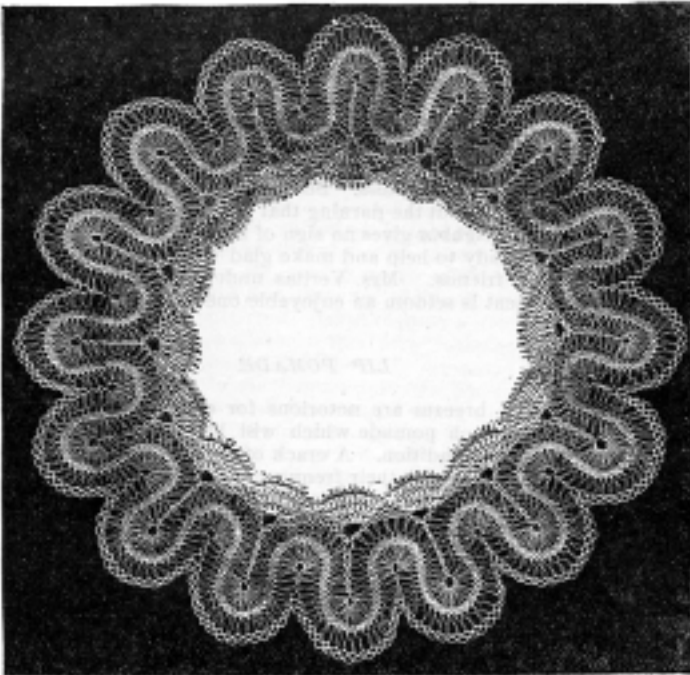


FIGURE NO. 3.—CENTER PIECE IN HAIR-PIN CROCHET.

working out one or several loops, as in the first row, and then working back as directed. The meshes or loops may be made deeper by allowing more beads in each loop.

CENTER-PIECE IN HAIR-PIN CROCHET.

FIGURE NO. 3.—Linen center-pieces and doilies with crocheted borders are always popular. They are not only beautiful but serviceable as well, which quality commends itself to the economical housekeeper. The engraving shows a center-piece made of fine white linen with a border of Maltese or hair-pin lace appliquéd on to the linen with Honiton lace silk in reverse button-hole stitch. The border is worked before the linen is cut, and is laid on the linen, basted down firmly and then run close to the edge with the sewing machine; then the linen can be cut away from beneath, and the edge of border worked with the silk. It is impossible to give directions stitch for stitch for the border, owing to lack of space, but sufficient will be given so that with the picture the mat may easily be copied. Over a steel hair-pin one inch across work a generous supply of Maltese work, using three singles across the pin. Leave the hair-pin in the end in case more of the work may be needed. Begin on one side of the Maltese work and fill out as follows: Fasten thread to first loop, then 3 ch., slip st. in next loop from below (this twists the loop, and all loops throughout the pattern must be taken from below); repeat in next 6 loops; 5 ch., slip st. in next loop and repeat in next 5 loops; slip stitch in 19 loops; 2 ch., sl. st. in center of 5 ch., 2 ch., sl. st. in loop and repeat 4 times; 3 ch., sl. st. in loop and repeat 7 times. This is for the inside of one scallop and must be repeated as often as necessary.

The filling out on the outside is simply: 20 loops slip-stitched together in the center of scallop on opposite side of braid, and 5 ch. and sl. st. in each loop between. Over this side work twice again with 6 ch. sts. from one loop to the other, fastening the scallops together. Now work five rounds around the inside edge after you have joined the border neatly. Work the first round so that the braid just touches but does not lap in the center of scallops. In the deep indentations work roll-stitch scallops which increase with each round, beginning with 6 rolls, and between work a series of 5 chains forming spaces which decrease in each round. This border is worked in twilled lace thread No. 60. It would be more serviceable if worked in No.

60 flax thread and the instructions will suit that thread. If a silk border is desired, select silk which is nearest in size to the threads mentioned.

CROCHETED SMYRNA LACE.

FIGURE NO. 4.—Make a chain of 60 stitches.

First row.—S. c. in 9th ch. of foundation, * skip 2 ch., shell (6 d. c.) in next ch., s. c. in next 3rd ch. *, * ch. 6, s. c. in next 6th-ch., *, repeat from 1st * to * once; repeat from 2nd * to * twice; repeat from first * to * once; repeat from second * to * twice, ch. 3, d. c. in last st. of ch.

Second row.—Shell in last s. c., s. c. under middle of next 6-ch., ch. 6, s. c. under next 6-ch.; make 5 more 6-chs., fastening as previously; shell in next s. c., s. c. in middle of shell, 3 ch., d. c. under 9-ch.

Third row.—Ch. 6, s. c. in middle of shell, shell in next s. c., s. c. under 6-ch., ch. 6, s. c. under 6-ch., shell in next s. c., s. c. under next 6-ch., make 4 more 6-chs. fastening as previously, ch. 3, d. c. under d. c.

Fourth row.—Shell in s. c., s. c. under 6-ch., make 3 6-ch. fastening as previously, * shell in s. c. * s. c. in middle of shell, repeat * to *, s. c. under 6-ch., repeat * to *, s. c. in middle of shell, 3 ch., d. c. under 6 ch.

Fifth row.—Ch. 6, * s. c. in middle of shell, * shell in s. c., repeat * to *, ch. 6, repeat * to *, shell in s. c., s. c. under 6-ch., make 3 6-chs. fastening as previously, ch. 3, d. c. under d. c.

Sixth row.—Shell in s. c., s. c. under 6-ch., make 2 6-ch. fastening as previously, shell in s. c., s. c. in middle of shell, make 3 more 6-chs.

Seventh row.—Ch. 9, s. c. under 6-ch., ch. 6, s. c. under 6-ch., shell in s. c., s. c. under 6-ch., ch. 6, s. c. in shell, shell in s. c., s. c. under 6-ch., 2 more 6-chs., ch. 3, d. c. under d. c.

Eighth row.—Shell in s. c., s. c. under 6-ch., make 2 6-chs. fastening as usual, shell in s. c., s. c. under 6-ch., 3 more 6-chs., fastening the last one in the 3rd ch. of 9-ch., ch. 2, work 9 d. c. under remaining 6 of 9-ch., s. c. on d. c. of 4th row, ch. 2, s. c. under 6-ch. at end of 3rd row.

Ninth row.—Ch. 1, work 1 d. c. on top of each d. c. of 8th row, making 1 ch. after each d. c., and putting 2 d. c. on top of 5th d. c., ch. 2, s. c. under 2-ch. of 8th row, * ch. 6, s. c. under 6-ch., shell in s. c., * s. c. under 6-ch., repeat * to *, s. c. in middle of shell, 3 more 6-chs., ch. 3, d. c. under d. c.

Tenth row.—Shell in s. c., s. c. under 6-ch., make 3 more 6-chs., shell in s. c., s. c. under 6-ch., make 2 more shells fastening as usual, ch. 6, s. c. under 2-ch. of 9th row, ch. 2, 1 d. c. on top of each d. c. of 9th row making 1 ch. between and putting 2 d. c. between 5th and 6th d. c. of 9th row, s. c. on d. c. of 3rd row, ch. 2, s. c. under 6 ch. of 2nd row.

Eleventh row.—Ch. 1, * d. c. on d. c., ch. 2 * repeat * to *

5 times more, d. c. between 6th and 7th d. c. of 10th row, ch. 2, repeat * to * 5 times more, d. c. on d. c., ch. 2, s. c. under 2 ch. of 10th row, ch. 6, s. c. under 6-ch., shell in s. c., s. c. in shell, ch., 6 s. c. in shell, shell in s. c., s. c. in shell, make 4 6-chs., ch. 3, d. c. on d. c.

Twelfth row.

—Shell in s. c., s. c. under 6-ch., make 6 6-chs., shell in s. c., s. c. under 6-ch., ch. 6, s. c. under 2-ch., ch. 2, d. c. on d. c. *, ch. 2, d. c. on d. c. *, repeat * to * 12 times more, s. c. under 9-ch. at beginning of 1st row.

Thirteenth row.—Ch. 1, * s. c. under 2-ch., ch. 3, s. c. under same 2-ch., * repeat * to * 11 times more, s. c. under 2-ch., ch. 6, s. c. under 6-ch. Repeat from 1st row. (See picture.)

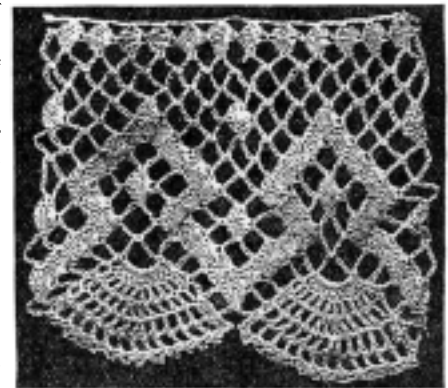


FIGURE NO. 4.—CROCHETED SMYRNA LACE.