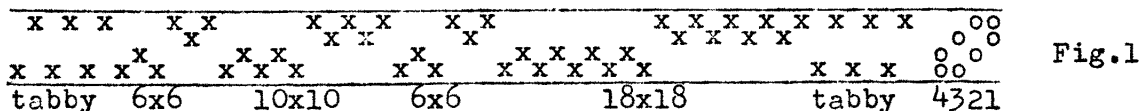


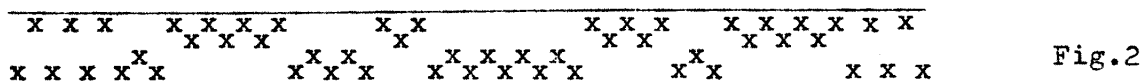
ODD WEAVES

IRREGULAR HUCKABACK LACE

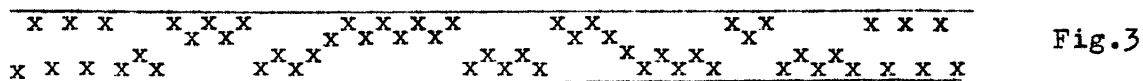
By "irregular" we mean here any huckaback which has no definite units in threading and treadling. Thus for instance a unit of 6x6 huck may be followed by 10x10 or 14x14, or even 18x18 as in the following draft:



We can also use only half a unit against another half a unit:



Finally we can combine the traditional units with the unsymmetrical hucaback (MW 45), as in fig.3:



In this last case we must remember to preserve the tabby order, that is not to jump from 1 to 3 and from 2 to 4. The tie-up is always as in fig 1, and the treadling follows the threading, although this is not compulsory. Thus the treadling for fig.1 should be: 2323232423 132424231313242313242424242313131313232323.

What is the practical application of irregular huck? There are the following possibilities:

1. TEXTURE. When a comparatively open fabric is wanted with an irregular texture, we can use any of the above drafts, but the last is the best. Take the units at random or use cards as in Accidental Drafts (MW 26/1). In texture weaving the treadling should not follow the threading. The only rule it must obey is the sequence in which the treadles are used: 1 follows 3 or 4; 2 follows 3 or 4; 3 follows 1 or 2; and 4 follows 1 or 2. As long as this order is preserved we shall have true tabby in the selvages.

With mixed warps use the heavier or more interesting yarns on shafts 2 and 3, and in weaving: on treadles 1 and 4.

2. HUCKABACK LACE ON OVERSHOT DRAFTS. Any Overshot draft written entirely on opposites can be used to weave huck-lace. But it will have rather poor edges, and therefore tabby selvages on 1 and 4 should be substituted (fig.4).

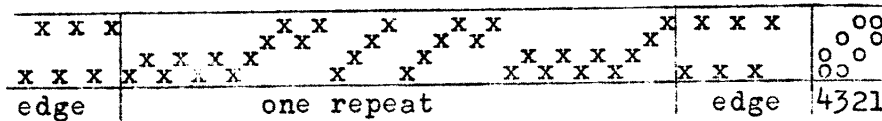


Fig.4

The treading will be: 232323 (edge); 2424242413132413241313242424
2413 (repeat); 23232323 (edge).

3.TWO-BLOCK PATTERNS IN HUCKABACK LACE.

With four shafts huck gives only one block of pattern plus ground. But by combining different units of huck we can have small, two-block patterns on a tabby ground as in fig.5. The difference between drafts 4 and 5 is that in the former the whole fabric is irregular lace, when in the latter the fabric is essentially tabby with patterns in lace. This must be taken into account when figuring out the sett of warp.

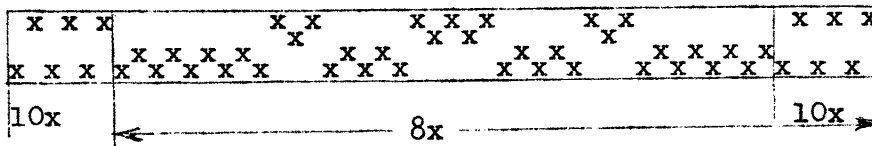


Fig.5

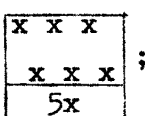
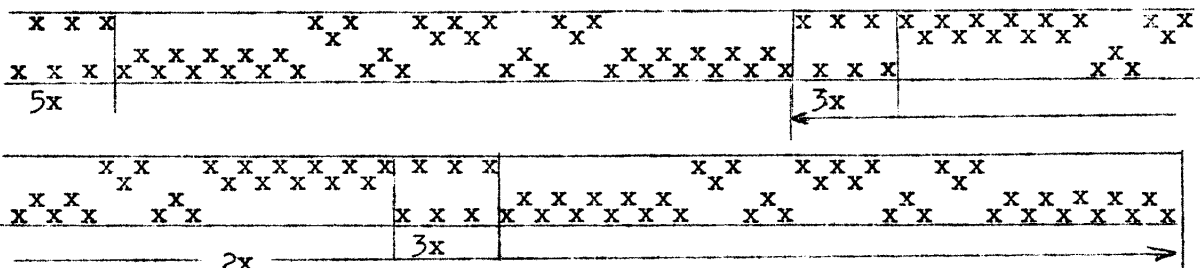
Treading: 23 - 30x; 2424242423132424231313242423132424242423- once
23 - 30x; etc.

In case of pattern huck one should observe the same rules as for huckaback lace in general: the yarn for warp and weft should be of about the same colour, and the same count; the sett of warp should be a little higher than for tabby alone; the fabric should be woven exactly 50:50, etc.

PRACTICAL PROJECT

Place mats in cotton & rayon.

Threading draft: (read from the left)



Warp: 8/2 cotton, old gold; No.of ends 327; Sett: 24 ends per inch; reed No.12; 2 ends per dent;

Weft: 8/2 rayon, yellow; 26 picks per inch.

Treading: 23 - 15x; 242424242423132423131324231324242424242;
32 - 9x; 31313131313242313242423132423131313131313;
23 - 9x etc.
