

MASTER WEAVER

BI - MONTHLY BULLETIN FOR HANDWEAVERS

Z - HANDICRAFTS - FULFORD - P.Q. - CANADA

May - June, 1961

No.57

FOUR SHAFT PATTERNS

IN DORNICK

Dornick Twill, not to be confused with Dornick Weave, is normally a 2:2 herringbone twill which does not produce floats longer than two. The right-hand and left-hand diagonals do not meet each other at the turning point in threading, but are staggered. Incidentally this draft does not give tabby.

Dornick Twill is used exclusively as yardage whether for tweeds or upholstery, with or without texture effects. The traditional draft is more or less as in fig.1.

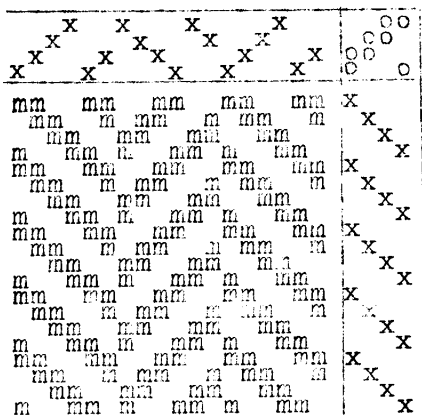


Fig.1

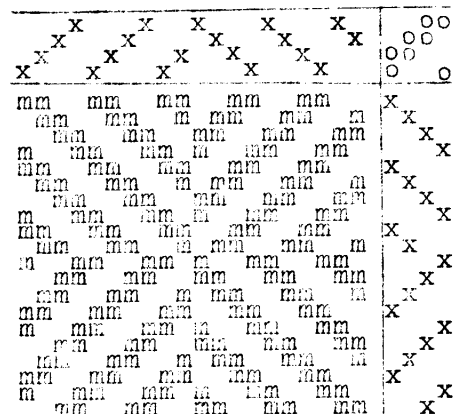


Fig.2

But there is no reason why we could not use this weave for small patterns in the same way as Diamond Twill or the Double-Diagonal Twill. As a matter of fact the Dornick Twill considered as a pattern weave lies half way between the two. Let us take as an example a cross woven in Dornick (fig.2). The difference between the Dornick and the Diamond Twill is that no matter what we do the diagonals in, the pattern will be always broken in the first, and therefore there is no reason to use a binder.

Larger patterns can be easily designed on the same principle as in Diamond Twill. The only difference is that at each turning point we skip one heddle. Fig.3 shows an example:

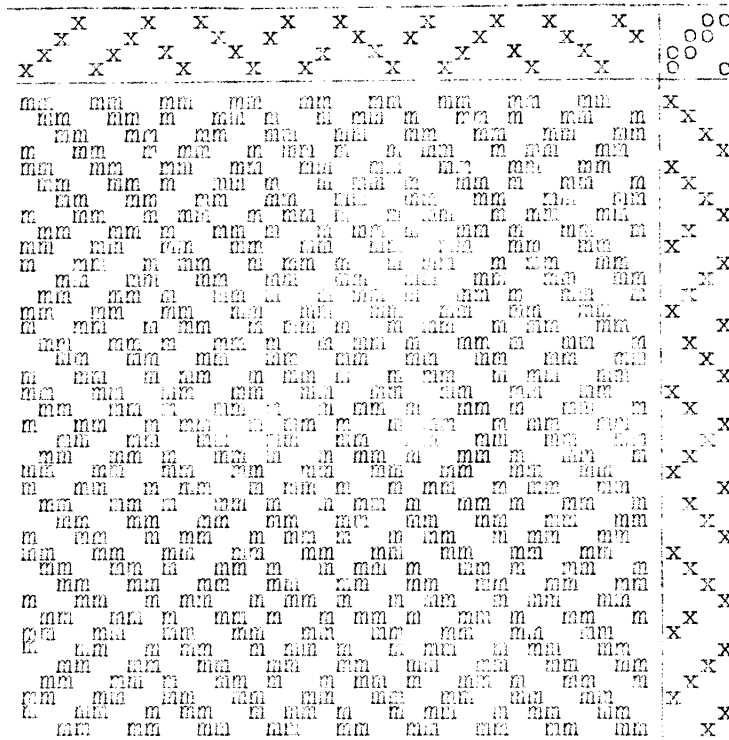


Fig.3

The pattern is not symmetrical, but the blacks on the left hand side of the pattern are symmetrical with the whites on the right hand side. If a complete symmetry is required, then we must have one longer float in the centre of each repeat, as in fig.4.

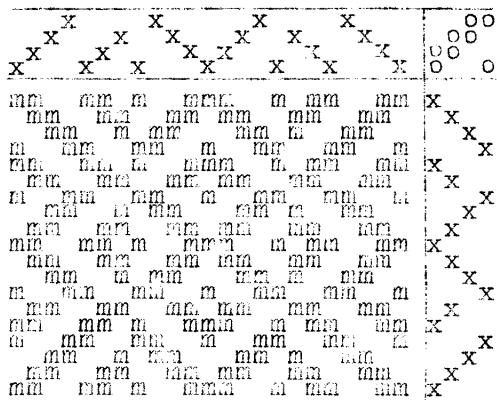


Fig.4

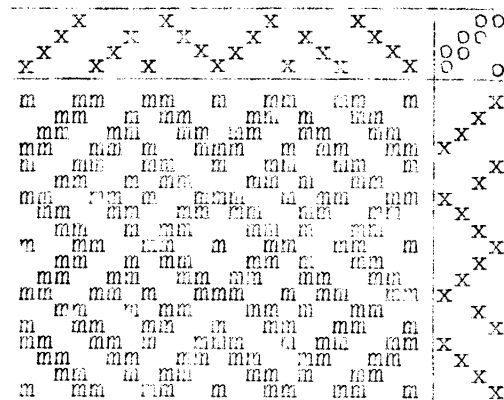


Fig.5

In fig.4 the pattern is woven approximately as-drawn-in, and in fig.5 we have a Rose variation of the same draft.

