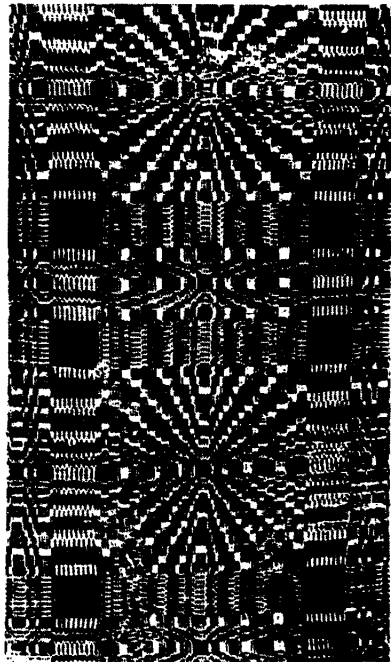
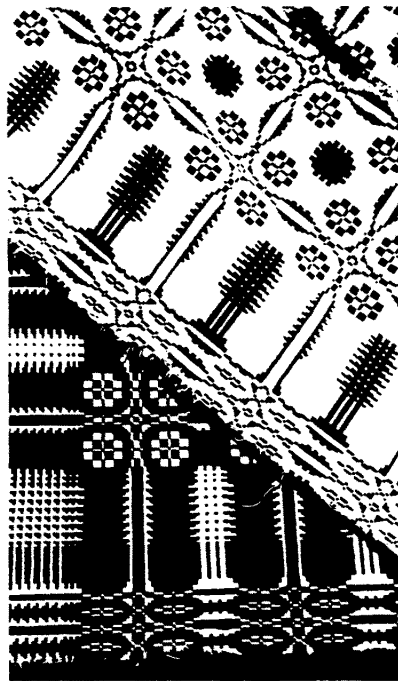


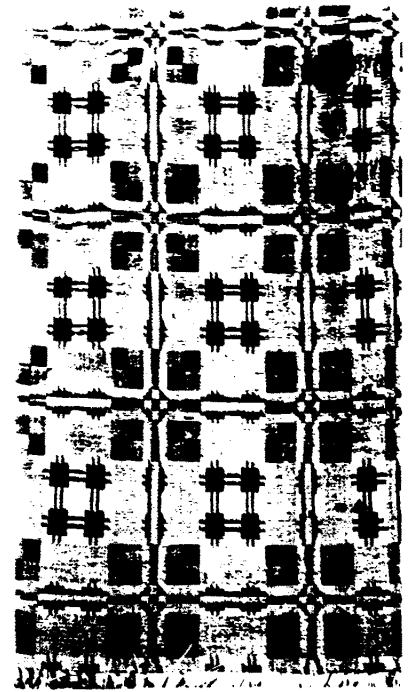
HANDWEAVING NEWS



No. 1.



No. 2.



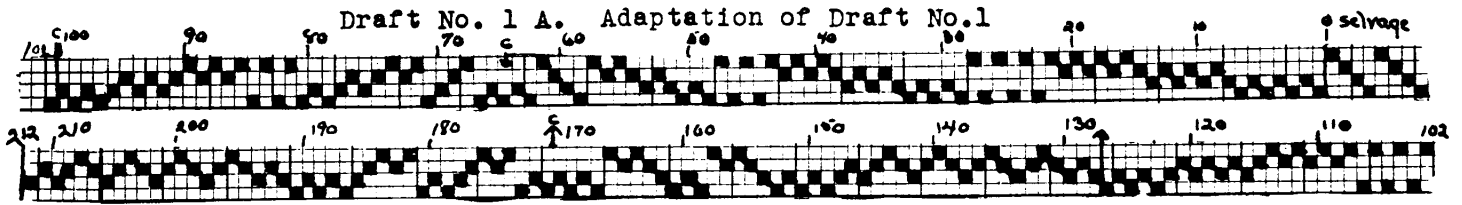
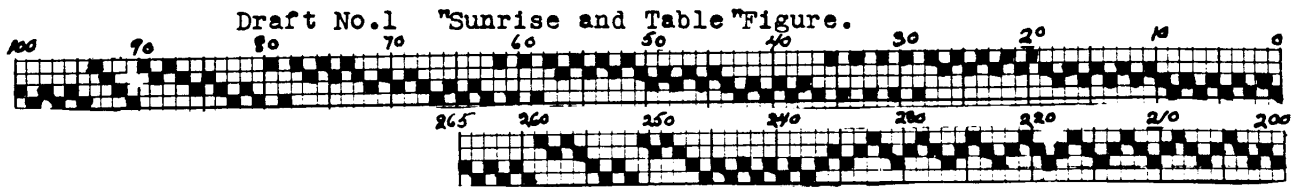
No. 3.

Three Old Colonial Coverlets.

This month, in answer to several requests I have had from subscribers, I am sending you three old Colonial coverlets, the photographs of which are shown above. No. 1 is a four harness draft of a blue and white one which I bought in Barnard, Vt. several years ago. It was woven about 1725-30 as near as I could get its history. It is one of the Sunrise type of pattern, sometimes called Jefferson's fancy, or Sunrise on the Walls of Troy etc. Names differ in different parts of the country, but the pattern is really a simple table with the radiating sunrise. The draft for this is given on Page 3, and also a draft of a similar pattern which I wove on a mercerized cotton warp No. 5, with orange Germantown yarn for tabby, and the same yarn in brown and tan for the pattern. This was quite different from the old one, and even very modern in its texture and general effect. The warp was set at 15 threads to the inch in this coverlet which was much coarser than the old one the pattern was adapted from.

No. 2 is a double woven coverlet, single snowball and roses with a pine-tree border. This coverlet and also No. 3 belonged to Miss Fullerton, one of the students in my weaving class at Wayne University this summer. Miss Fullerton says that these belonged to her ancestors who came from Pennsylvania, and were probably woven by her great grandmother Craig. The drafts for these in "summer and winter" weave are given on Page 3. I like to call No. 3, the Craig coverlet, on that account. It was also a double woven one, but rather exceptional in that it was woven all of very fine wool, one warp was all of dark blue, and the other warp was of soft light blue for the pattern blocks 3, 4, and 5, and red orange for pattern blocks 1 and 2. These were both pieced coverlets. No. 3 had a narrow border which does not show in the photo above, but is included in the draft on Page 3.

No. 4 on page 3 is the draft of another pine-tree border and single snow ball coverlet which came to me recently, and is owned by Mrs. Savage, another one of my weaving students. This gives the pine-tree border on the left hand side, and was double woven in dark blue wool for one warp and white cotton for the other.



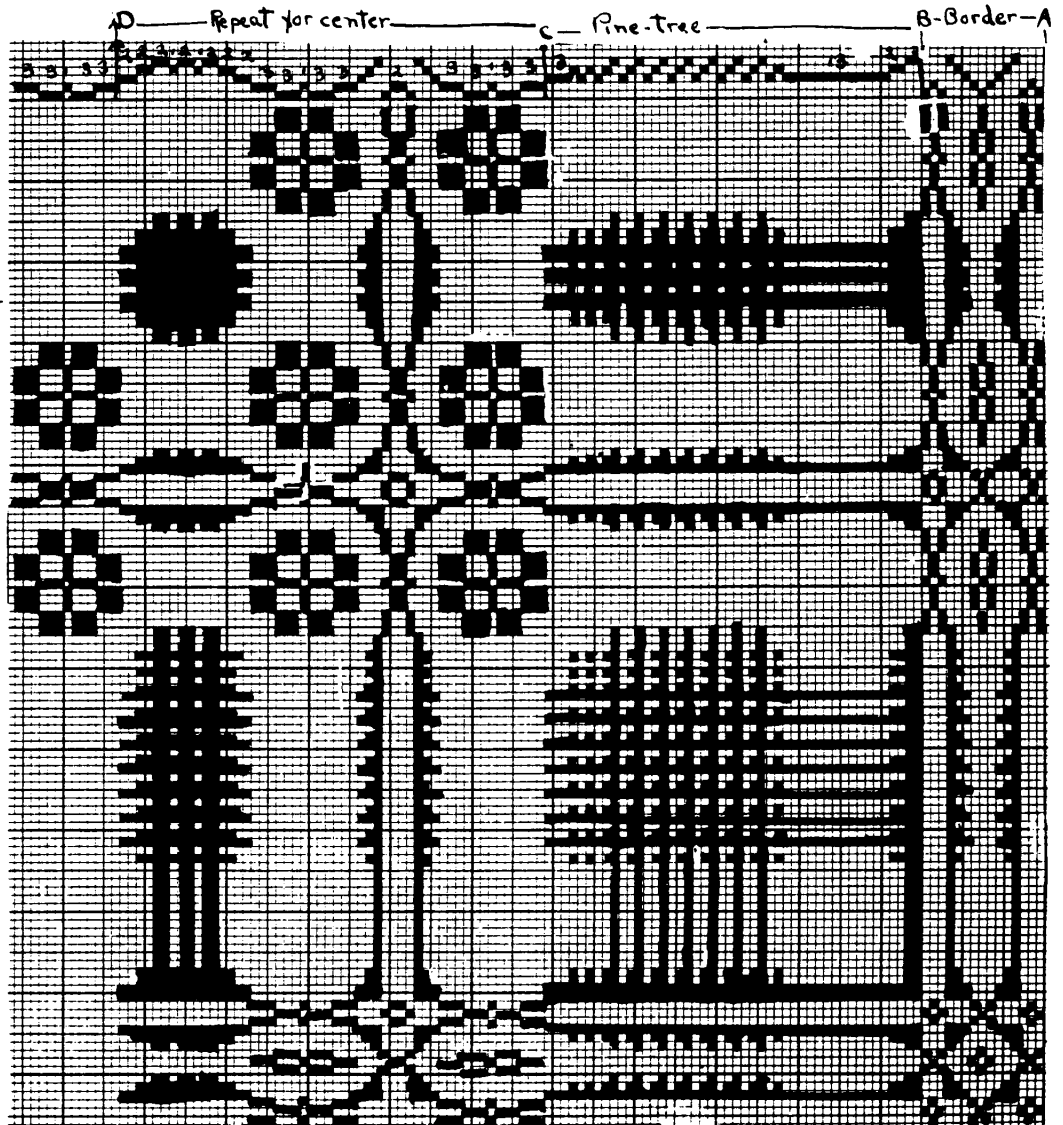
Use the regular four harness tie-up for both of the above drafts. Weave the pattern blocks in the order in which they are threaded into the loom. In No.1, the complete "Sunrise" is from 0 to 100, then 99 back to 0. The table figure begins with thread 200 to 265, then 264 back to 200. These may be repeated as desired. Center the coverlet at thread 100, the center of the "Sunrise", or at thread 265, which is the center of the table figure. In No.1 A, all of the "Sunrise" and table figure are complete as given. Center a coverlet on either thread 65, or on thread 170. A plain twill or simple diamond border may be added if desired.

Draft No.2 Pine-tree Border, Roses and single Snowball.

Order of Treading the Pattern Blocks.

Start at the lower right hand corner of the drawing. Weave the blocks as follows,-

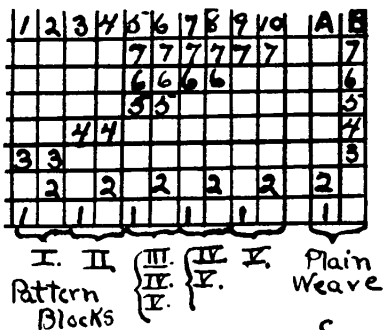
- | | | | | |
|---------|-----------------|-----------------|--------|--------|
| 2-1 | } Edge | 5-1 | } Star | |
| 1-1 | | 45-1 | | Center |
| 2-1 | } Border | 845-1 | } IV | |
| 345-1 | | 2-1 | | |
| 45-1 | } I. | 1-2X | } V | |
| 5-1 | | 2-1 | | |
| 1-1 | | 345-1 | | |
| 2-1 | | 45-1 | | |
| 1-1 | | 5-1 | | |
| 5-1 | | 1-3X | | } Rose |
| 45-1 | | 2-3X | | |
| 345-1 | | 1-1 | | |
| 2-1 | | 2-3X | | } VI |
| 1-1 | | 3-3X | | |
| 2-1 | 5-2X | } Snow-
Ball | | |
| 3-45-2X | 45-2X | | | |
| 45-2X | 345-2X | | | |
| 5-13X | } Pine-
Tree | 45-1 | } VII | |
| 45-1 | | 345-2X | | |
| 5-1 | | 45-1 | | |
| 345-1 | | 845-2X | | |
| 45-1 | | 45-2X | | |
| 5-1 | | 5-2X | | |
| 45-1 | | } Rose | | 1-3X |
| 5-1 | | | | 2-3X |
| 45-1 | | | | 1-1 |
| 5-3X | | } III | | 2-3X |
| 1-3X | 1-3X | | | |
| 2-3X | | | | |
| 1-1 | | | | |
| 2-3X | | | | |
| 3-3X | | | | |



Explanation of Draft No.2.

From A to B is the edge border, from B to C is the Pine-tree, and C to D is the repeat for the center. To weave this in the "Summer and Winter" technique requires seven harnesses, five for the pattern blocks, and harness 1 and 2 for the alternate threads. The actual threading of each pattern block is shown at (A) below. Each pattern block unit is composed of four threads of warp, and each unit is repeated as shown on the drawing of Draft No.2. The full tie-up draft requires 12 treadles, but if you weave with both feet, you can use only ten treadles, by tying treadle one to harness 1, and 2 to harness 2, then weave these alternately with the pattern block harnesses. The figures in the Drafts 3 and 4 indicate the number of times each unit of the actual Threading draft is repeated. To draw down the patterns of drafts 3 & 4, draw out the larger draft as in Draft No.2, and follow the order of drawing down the pattern blocks in the order of the treadling as given. If you have a Structo ten harness loom, it is very easy to bring down the proper harnesses for weaving the different pattern blocks.

Tie-up Draft

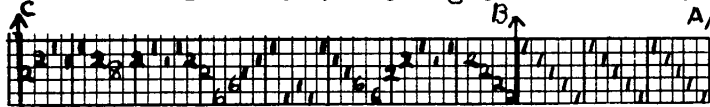


The directions for the weaving given on Page 2 refer to the order of the weaving of the pattern blocks, not the treadles used. The roman numbers at the bottom of the tie-up draft refer to the pattern blocks. If this is not clear, write me.

Actual Threading of the Units of the pattern blocks.

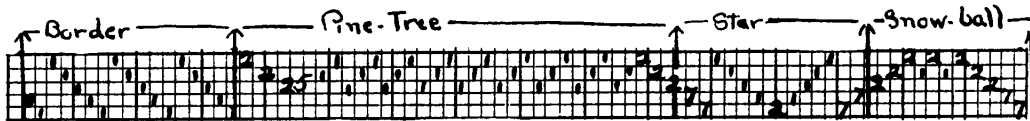
BLOCK V	BLOCK IV	BLOCK III.	BLOCK II.	BLOCK I.
7 7				
	6 6			
		5 5		
			4 4	
				3 3
2	2	2	2	2
1	1	1	1	1

Draft No.3 Craig Coverlet owned by Miss Fullerton.



This is a much more unusual coverlet than the one at Draft No.2. From A to B is the simple border, and from B to C one repeat of the pattern. This is the shortened up draft, it should be drawn out one square for each unit if you wish to expand the draft to get the woven effect. Weave the pattern blocks as follows, - Block 2-1, 1-1, 5-1, 45-1, 345-1; - repeat this 3 times. Then block 2-2x, 1-2x, 5-2x, 45-2x, 345-2x, 45-1, 345-1, 45-2x, 5-2x, this complete's the simple border. For the main pattern repeat, weave the blocks as follows, - Block 1-7x, 2-7x, 5-1, 45-1, 345-1, 1-1, 2-1, 1-1, 345-1, 45-1, 5-1, 2-7x, 1-7x, 5-2x, 45-2x, 345-1, 45-1, 345-1, 45-2x, 5- 8x, 45-2x, 345-1, 45-1, 345-1, 45-2x, 5-2x.

Draft No.4. Mrs. Savage's Coverlet
Single Snow-ball with Pine -tree Border on left side



This draft may be woven on the same tie-up draft as No.2 & 3, and it is also a five block pattern which can be woven on seven harnesses in the "Summer and Winter" weave. The Pine-tree border is similar to the one at No.2 on Page 2, but written to come on the left side of the coverlet. If you wish to have your border on the right side of your loom, just reverse this draft. The simple edge border is almost the same in the threading as for No.2, but the effect is quite different as the order of the blocks as they are woven are changed. To weave, proceed as follows, - Block 2-1, 1-1, 5-1, 45-1, 345-1, repeat this 3x for the simple edge border at the left. Then for the Pine-tree, Block 2-1, 1-1, 345-2x, 45-2x, 5-25x; *45-1, 345-1, 5-1; * repeat from * to* 8x; For the Star 45-1, 345-2x, 45-2x, 5-2x, 1-14x, 2-14x, 345-1, 45-1, 5-1, 1-1, 2-2x, center of star figure, repeat back to beginning of star figure in same order. Then the snow-ball figure, block 5-2x, 45-2x, 345-2x, 45-1, 345-2x, 45-1, 345-2x, 45-2x, 5-2x. I hope that this explanation has been enough so those of you who wish can use these drafts all right. If there are any questions about them, be sure and write to me.