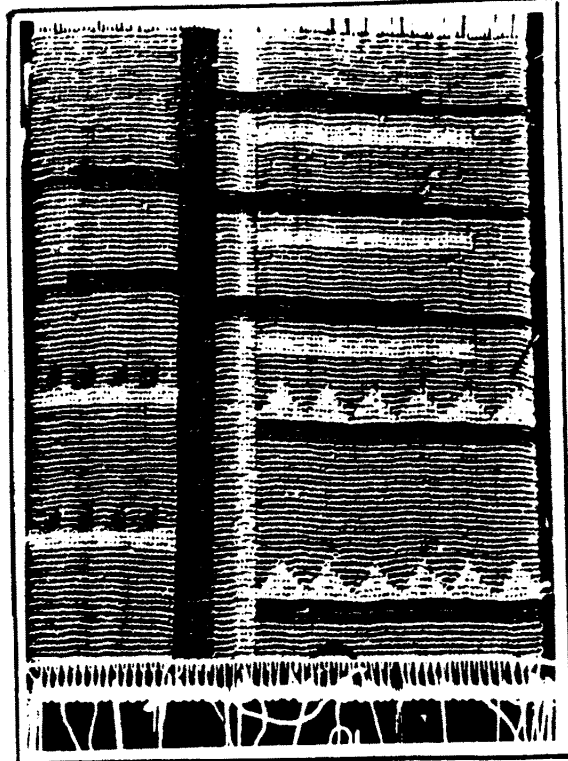
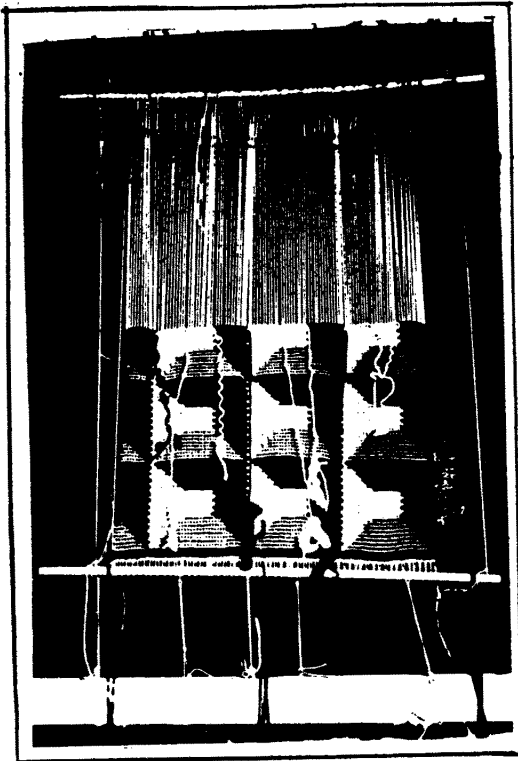


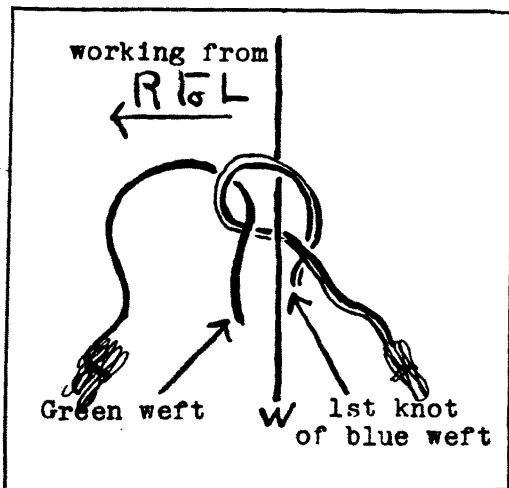
HANDWEAVING NEWS



Greek Soumak - A new method of Interlocking Verticals.

The technique of Greek Soumak knot is an interesting form of weaving which requires only a stiff frame of some sort, as an old picture frame or hooked rug frame. Detailed directions of how to set this up and the technique of how to make the knot were given in detail in Sept and October 1938 Handweaving News, and will not be repeated here, as many of you already have these copies. For those who have not, I still have these available at 45¢ each.

The geometrical design on the left above shows the setup and design partly finished. This was woven by Margaret Lover, and the one on the right was designed and woven by Ruth Foster, both students of mine. The purpose of this News is to show how to prevent the serrated effect, as will be easily seen in the verticals of the left hand design above, caused by the meeting and joining of two colors. Note that in Miss Foster's design there is no serrated effect, even though the verticals go the full length of the design.



How to Join Wefts so the interlocking does not show or leave a slit.

These directions are given for the method of making three knots on each warp thread. Working from right to left, at the first knot on the warp thread where the blue weft color ends, pull the green weft thread through the loop of blue as shown. Hold this green weft bobbin to the left of the blue knot. Tie the two remaining knots of blue weft. Pull the green weft tight, and tie the three green knots on the next warp thread. Continue until you meet the next color, then knot in the same way, from the right to left side of the loom. When working from left to right, hold the new weft color to the right of the last knot of the ending color, but tie in the same way as described above. We wish to express our thanks to Miss Foster and Miss Dietz for this improved way of working.

Design of Miss Foster's Weaving as shown on Page 1.

This design is an abstraction of bare branches of trees, mountains in the distance on the right, and small sail boats on the left, as seen through the trees. You can use your imagination on this, but it was a very attractive wall hanging. It was woven of tapestry wools. The black on the design the darkest shade of blue, the white a middle blue, and the X's all with a light gray green. Any other color arrangement can be used as desired. Miss Lover's design was woven for a foot stool cover, in shades of tan, yellow, and dark brown.

