

# HANDWEAVING NEWS

FIGURE No.1

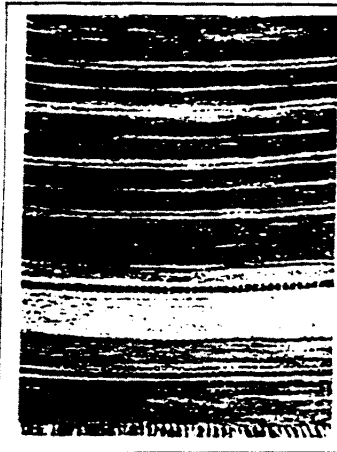


FIGURE No.2

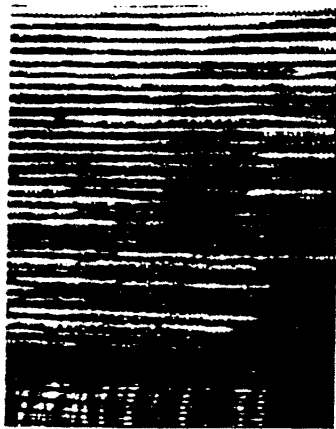
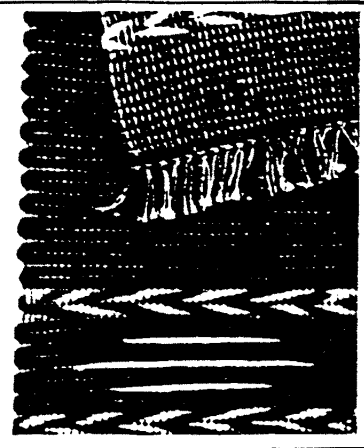


FIGURE No.3



RAG RUGS.

THERE ARE TWO REASONS FOR MAKING A RUG OF RAGS. ONE IS TO USE UP MATERIAL FOR THE WEFT WHICH IS EASILY AVAILABLE IN EVERY HOME. AND THE OTHER IS TO MAKE A RUG FOR SOME SPECIAL PLACE OF A DEFINITE SIZE AND DESIGN. WITH A LITTLE PLANNING, IT IS JUST AS EASY TO MAKE AN INTERESTING ATTRACTIVE RAG RUG, AS IT IS TO WEAVE ONE OF SOME OTHER MATERIALS THAT ONE MAY PURCHASE.

SOME OF THE MEMBERS OF DETROIT HANDWEAVER'S GUILD THIS PAST SPRING HAVE MADE SOME VERY GOOD LOOKING RAG RUGS, AND IT IS THESE I WILL DESCRIBE TO YOU NOW, IN THE BOOK "WEAVING ON THE HEARTH-SIDE LOOM" ARE SEVERAL PAGES WHICH SHOW HOW TO PLAN UNEVENLY DESIGNED STRIPES FOR A RUG, HOW TO GET THE RIGHT PROPORTION OF LENGTH TO THE WIDTH. AND ALSO HOW TO JOIN RAGS OR STOCKING LOOPS BY KNOTTING THEM TOGETHER INSTEAD OF SEWING. AS MANY OF YOU HAVE THIS BOOK, I WILL NOT REPEAT THOSE DIRECTIONS HERE.

USE OF COLOR. "HIT AND MISS" RUGS CAN BE MADE THAT ARE ATTRACTIVE, BUT IT IS MORE THAN LIKELY THEY WILL NOT BE. WITH SMALL AMOUNTS OF MATERIALS, SUCH AS PERCALES ETC, IT IS GENERALLY TO TEAR OR CUT THE MATERIAL UP INTO LENGTHS AND THEN MIX THEM UP WELL. KEEP LIGHTER COLORS FOR ONE RUG AND DARKER COLORS FOR AN OTHER RUG, OR FOR A CONTRAST IN BORDERS. WE LIKE TO DYE OUR RAGS TO HAVE ENOUGH FOR ONE RUG, AND THE MORE UNEVEN THE DYE TAKES, THE BETTER IT IS, AS THEN YOU GET A SHADING FROM DARK TO LIGHT. THIS IS ALWAYS OF MORE INTEREST THAN A SOLID COLOR. A RUG OF THIS TYPE IS SHOWN AT FIGURE No.1 ABOVE. INSERT SMALL LENGTHS OF A BRIGHT COLOR AT INTERVALS TO GIVE SMALL ACCENTS ADDS INTEREST.

COLORED WARPS. ARE OFTEN MOST EFFECTIVE. RUG No.2 WAS MADE OF A GREY PLAID BLANKET. THE WARP USED WAS SLATE GREY, AND ROSE CARPET WARP. TWO SECTIONS OF THE NEW "NELLIE SARGENT JOHNSON" LOOM WERE WARPED WITH ROSE, THEN TWO SECTIONS WITH GREY FOR THE WIDTH DESIRED. WEFT WAS ALL THE SAME MATERIAL, BUT THE PLAID MADE IT APPEAR AS IF A PATTERN HAD BEEN LAID-IN. GET OUT SOME OF YOUR WORN BLANKETS AND SEE WHAT HAPPENS WHEN YOU WEAVE OVER A STRIPED WARP. A ROSE RAYON REDSPREAD OVER PALE GREEN WARP TURNED OUT A LOVELY ROSY BEIGE COLOR.

THE RUG AT FIGURE NO. 3 IS OF INTEREST FOR TWO REASONS. THE WARP IS ONE THREAD OF DARK GREEN AND ONE OF LIGHT GREEN THREADED ALTERNATELY ALL ACROSS THE WIDTH OF THE LOOM. IT WAS WOVEN OF DARK GREEN RAGS. THE DESIGN WAS MADE BY TWISTING A LIGHT TAN WEFT WITH THE DARK GREEN FOR THE V SHAPES, AND JUST LAYING IN EXTRA STRIPS OF LIGHT WHERE THE LIGHT LINES ARE. VERY EASY AND EFFECTIVE TO DO.

PREPARATION OF RAGS. NEVER WEAVE POORLY PREPARED RAGS. WOOL RAGS ARE BEST IF YOU HAVE THEM. THE WIDTH TO CUT THESE DEPENDS SOMEWHAT ON THE WEIGHT. IF IN DOUBT HOW WIDE TO CUT THEM, TRY A FEW RIGHT ON THE LOOM TO GET THE TEXTURE DESIRED. ALWAYS CUT YOUR RAGS EVENLY, AND IF A LIGHT AND HEAVY MATERIAL IS COMBINED TRY TO CUT THE LIGHTER WEIGHT MATERIALS WIDER, SO THE WOVEN EFFECT WILL BE SIMILAR. YOUR RAGS CAN BE CUT ANYWHERE FROM 1/2 INCH TO 2 INCHES WIDE. PLACE THE END OF ONE STRIP OVER THE END OF THE OTHER, AND SEW TOGETHER, BY HAND OR ON A MACHINE. OR THEY CAN BE KNOTTED TOGETHER IF THE STRIPS ARE WIDE ENOUGH.

AMOUNTS OF MATERIAL. WE ESTIMATE THAT 2 POUNDS OF CUT RAGS ABOUT AN INCH WIDE WILL WEAVE ONE SQUARE YARD OF WOVEN MATERIAL. FOR A 36" RUG ON THE NEW "NELLIE SARGENT JOHNSON" LOOM, WARP 450 WARP THREADS. THIS WILL BE ABOUT 38 INCHES IN THE REED. BUT RAG RUGS DO PULL IN A LITTLE ON THE EDGE. BE SURE AND SLEY RAG RUG WARP DOUBLE FOR 3 OR 4 SLITS ON EACH SELVAGE EDGE. TO COMPLETELY COVER THE WARP THREAD WITH WEFT, SLEY THE REED 2 THREADS IN A SLIT, SKIP A SLIT, SLEY TWO MORE, SKIP A SLIT ETC. FOR THE WIDTH OF THE LOOM. IF THE WEFT DOES NOT COVER, CUT THE WEFT A LITTLE FINER.

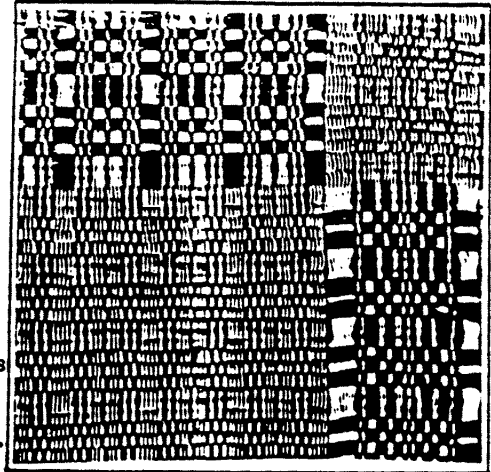
FINISH WITH A HEM OR A FRINGE. WE FINISH THEM BOTH WAYS. BUT A FIRM HEM WILL GENERALLY WEAR A LITTLE BETTER. THESE HEMS SHOULD BE WOVEN OF WARP LIKE THE COLOR OF THE BODY OF THE RUG IS POSSIBLE, OR OF FINE RAGS IF DESIRED. ALLOW 2" OF PLAIN WEAVE FOR HEMS. WHEN THE RUG IS REMOVED FROM THE LOOM, STITCH TWICE BE FORECUTTING THE RUGS APART, ALLOWING ABOUT 1/4 INCH BETWEEN STITCHING. THIS HELPS SECURE THE THREADS ALSO. FOR FRINGES LEAVE ABOUT 8" BETWEEN THE RUGS. FOLDED NEWSPAPER OR CARDBOARD STRIPS CAN BE PUT INTO THIS SPACE IF DESIRED. THEN REMOVE AFTER THE MATERIAL IS STITCHED.

A MODERN FOUR BLOCK PATTERN.

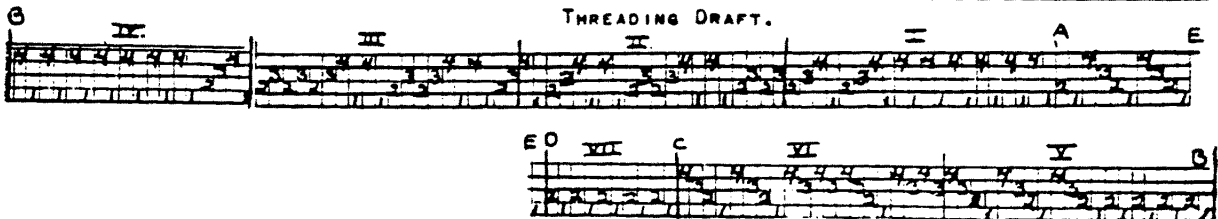
THIS RUG SHOWS A RATHER DIFFERENT WAY TO USE A COLONIAL OVER-SHOT THREADING THAN IS COMMONLY SEEN. IT FORMS A BORDER ON THE ENDS AND SIDES OF THE RUG WITH A TEXTURED CENTER. FOR THE RUG SHOWN HERE CUT THE WOOL RAG WEFT ABOUT 1/2" WIDE. THIS WAS DYED DARK BROWN FOR THE PATTERN, AND ORANGE CARPET WARP WAS USED FOR THE PLAIN WEAVE AFTER EACH OF THE PATTERN SHOTS.

ARRANGMENT OF THREADING DRAFT FOR 390 THREADS.

THREAD FIRST TWO HEDDLES DOUBLE	2
THEN E TO A	10
A TO B, GROUP I, II, III, IV	78
B TO C " V, VI. REPEAT 5X40	200
C TO D " VII ONCE	11
THEN B TO A, GROUP IV, III, II, I	78
A TO E	10
THREAD LAST HEDDLE DOUBLE	1
TOTAL	390



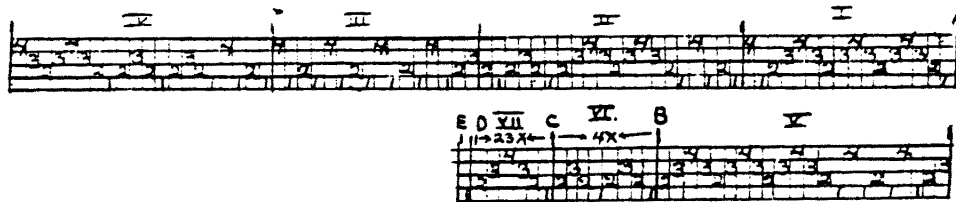
FOR A WIDER RUG, REPEAT FROM B TO C.  
TOTAL HEDDLE COUNT. HARNESS 1-112, 2- 89,  
 3 - 82, 4 -104, TOTAL 387. THE EXTRA WARP THREADS ARE USED UP BY THREADING THE FIRST TWO AND THE LAST HEDDLES DOUBLE. WEAVE A 2" HEADING WITH ORANGE CARPET WARP FOR A HEM. USE A AND B TREAD.



TO WEAVE THIS USE THE TREADLES IN THE FOLLOWING ORDER, ALTERNATING THE PATTERN SHEDS WITH THE PLAIN WEAVE, AS USUAL. TREADLE 4-3x, 2-1, 4-1, 2-1, 4-1, 2-3x, CENTER OF BORDER. REPEAT IN REVERSE ORDER BACK TO THE BEGINNING OF THE PATTERN. FOR THE CENTER OF THE RUG USE TREADLE 3-3x, 1-1, 3-1, 1-1. REPEAT THIS FOR THE DESIRED LENGTH FOR THE CENTER. END WITH TREADLE 3-3x. THEN REPEAT THE END BORDER AND THE 2" OF PLAIN WEAVE AS AT THE BEGINNING. ALWAYS BE SURE AND USE THE ALTERNATE BETWEEN THE SHOTS OF PATTERN WEFT.

ANOTHER WAY TO WEAVE THIS MAKES A BATTERN FOR THE CENTER, A PATTERNED CORNER AND A TEXTURED END AND SIDE BORDER. FOR THIS USE TREADLE 1-3x, 3-1, 1-1, 3-3x, 1-2x, 3-1, 1-1 CENTER, REVERSE BACK TO BEGINNING. FOR CENTER OF THE RUG, WEAVE TREADLE 4-3x, 2-1, 4-1, 2-1, 4-1, 2-3x, 4-1, 2-3x, 4-1, 2-1, 4-1, 2-1, REPEAT THIS FOR LENGTH DESIRED. END WITH TREADLE 3-3x. THEN REPEAT THE END BORDER, AND FINISH WITH THE PLAIN WEAVE HEADING. THESE RUGS ARE DECIDEDLY DIFFERENT FROM MOST OVER-SHOT RUGS AND GIVE AN EXCELLENT EFFECT.

MODERN ARRANGMENT FOR A "CRACKLE" WEAVE RUG.



THIS THREADING DRAFT AND THE RESULTING PATTERN IS VERY SIMPLE WITH MOST OF THE INTEREST IN TEXTURE. THERE ARE MANY WAYS IT CAN BE WOVEN BESIDES THOSE GIVEN.

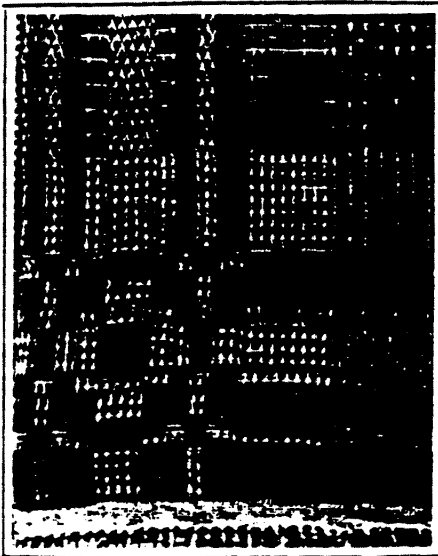
ARRANGMENT FOR A WARP OF 390 THREADS

THREAD A TO B, GROUP I, II, III, IV, V.	94
B TO C, GROUP VI, REPEAT 4x8	32
C TO D, " VII, " 23x6.	138
D TO E	1
C TO B, " VI, REPEAT 4x8	32
B TO A, " V, IV, III, II, I.	94
	<hr/> 390

HEDDLE COUNT IN GROUPS. MULTIPLY THIS BY NUMBER EACH GROUP IS REPEATED; FOR TOTAL ON EACH HARNESS.

	I	II	III	IV	V	VI	VII	
HARNESS 1	2	5	7	5	4	2	1	
HARNESS 2	4	7	4	7	6	4	2	
HARNESS 3	6	5	1	5	7	2	2	
HARNESS 4	4	3	4	3	5	0	1	
	<hr/> 16	<hr/> 20	<hr/> 16	<hr/> 20	<hr/> 22	<hr/> 8	<hr/> 6	

FOR A WIDER WARP REPEAT GROUP VI AS MANY TIMES AS DESIRED.



WARP CARPET WARP SET 12 TO THE INCH  
WEFT MAYSVILLE RUG FILLER, DARK BLUE FOR PATTERN SHOTS AND CARPET WARP LIKE WARP FOR THE PLAIN WEAVE. RAGS CAN BE USED IF DESIRED.

WEAVE A PLAIN WEAVE HEADING WITH THE WARP. FOR THE END BORDER, USE TREADLE 2-8x. THEN TREADLE 4-2x, 1-2, 2-5x, 3-3x, 4-8x, 3-3x, 2-5x, 1-2x, 4-2x. THEN TREADLE 3-16x. FOR THE CENTER OF THE RUG, REPEAT TREADLE 2-2x, 3-2x, ALTERNATE FOR THE DESIRED LENGTH. THEN REPEAT THE END BORDER BACK IN REVERSE TO THE BEGINNING. THE FINISHED WIDTH OF THIS RUG IS ABOUT 30". ONE SKEIN OF RUG FILLER WEAVES ABOUT 18" IN THIS WIDTH.

THERE ARE MANY OTHER INTERESTING WAYS OF TREADLING THIS PATTERN. TRY USING HOME-CRAFT SOFT COTTON, USING 3 STRANDS AS ONE WEFT, WITH CARPET WARP OR "ENTERPRISE" COTTON FOR THE PLAIN WEAVE SHOTS. HEAVY RUG WOOLS, CHENILLE, CANDLEWICK COTTONS ETC. CAN ALSO BE USED FOR WEFT FOR THESE.