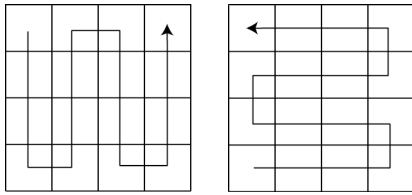


Transposition Ciphers



write in

read out

Figure 1. A Transposition Cipher

Figure 2 shows the message above written in according to the route in Figure 1.

w	c	k	x
e	a		i
	t	a	s
a	t	t	

Figure 2. Message as Written In

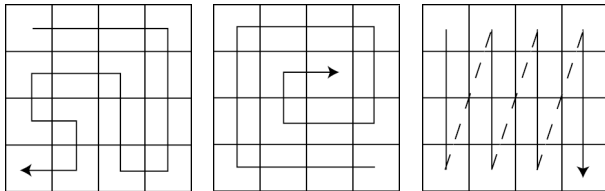


Figure 3. Transposition Routes

c	x	k	w
a	i		e
t	s	a	
t		t	a

t	s	a	
t		t	a
c	x	k	w
a	i		e

columns changed → rows changed

Figure 4. Example of a Nihilist Transposition

a	h	i	p
b	g	j	o
c	f	k	n
d	e	l	m

Figure 5. Labeled Route Positions

h	p	i	a
g	o	j	b
f	n	k	c
e	m	l	d

f	n	k	c
e	m	l	d
h	p	i	a
g	o	j	b

columns changed → rows changed

Figure 6. Rearranged Routes

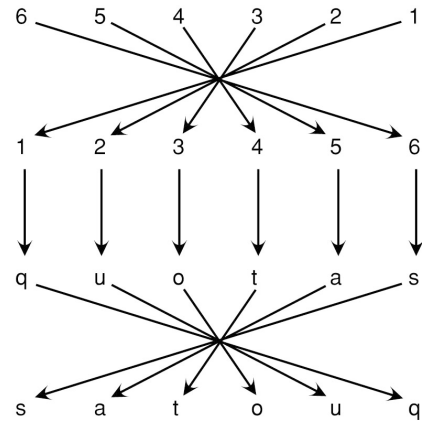


Figure 7. Transposition by Mapping