

# SWATCH PAGE

## M'S AND O'S – A LINEN WEAVE

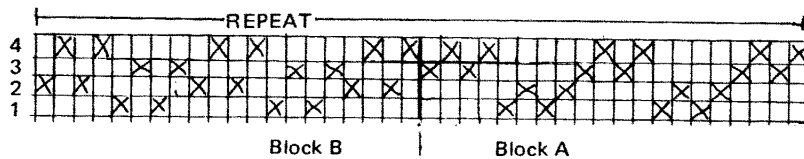
This weave is one of the weaves presented in the linen weave group project currently at the Guild Rooms.

Photos by Jay Magoffin

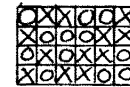


Sample 1

Threading

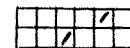


TIE-UP

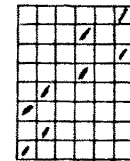


Falling Shed = X  
Rising Shed or Table = O

Treadle



Plain Weave



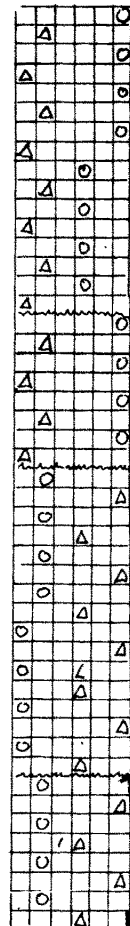
Samples 1 + 2

Block A

Block B

Sample 3

O = Dark Weft  
△ = Light Weft



Treadle Twice

Treadle Once

Treadle Twice

Treadle Once

Repeat

### Theory

M's and O's designs are made of alternate blocks of plain and rib weave. One of the blocks is written on the 1-2,3-4 harness combination (referred to as Block A) and the other is on the harnesses 1-3, and 2-4 (Block B). Thus the weave is woven on the opposites principle. The block being treadled shows four-thread skips. The block not being treadled appears as plain weave. The warp and weft are forced into curves. This combination requires an unusually closely set warp and a very hard beat. The number of weft shots per block is limited as they have a tendency to become sleazy at the top. The plain weave portions should look like tabby.

### Materials

Warp: Cotton perle 10/2

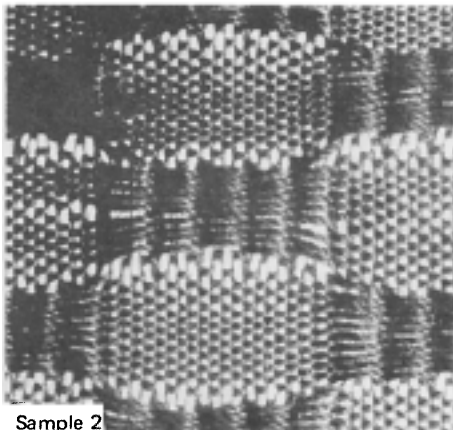
Weft: Cotton perle 10/2 – Samples 1, 2, and 3  
7/2 wool – Sample 4

Reed: 10 dents/inch

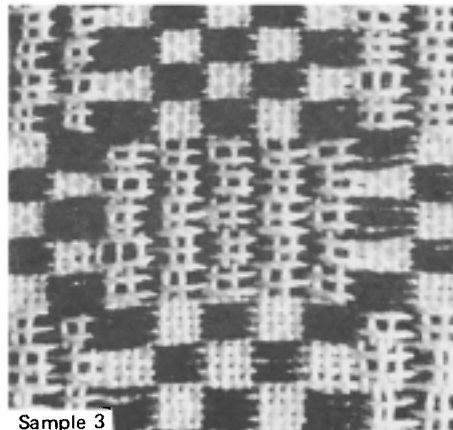
Sley: Double

Other possible materials are fine linens which should be sleyed closer together the finer they are (the blue group project sample at the Guild was done in CUM 14/1 linen sleyed doubly in a 16 dent reed) and are suitable for fine table linens, and fine wool (for baby blankets or draperies) and heavy rayon combined with wool or linen for drapery (suggested in Mary Black's book). I would not use these fabrics for upholstery because of the 4-thread skips.

Draft: from M.P. Davison



Sample 2



Sample 3

