

Yellow H. These give pale lemon to full orange shades of remarkable clearness. Paramine Orange G and R, and Paramine Brown G show different grades of the new rust shade now so much in vogue. Bright pink to Bordeaux shades are also shown dyed with Rosophenine 10B, Benzopurpurine 4B, Paramine Fast Pink B, or Paramine Fast Bordeaux B. There are also some pretty shades of green, blue, violet and greyish black dyed with Paramine colors bearing the name color.

The United States Civil Service Commission, Washington, D. C., announces an open competitive examination for the Federal civil service for **TEXTILE ASSISTANT, QUALIFIED AS KNITTER. TEXTILE ASSISTANT, QUALIFIED AS SLASHER.** Applicants should at once apply for Form 1312, stating title of examination desired, to the Civil Service Commission, Washington, D. C., or the Secretary of the United States Civil Service Board in any of the large cities.

Applications should be properly executed, excluding the medical certificate, and must be filed with the Civil Service Commission, Washington, D. C., prior to the hour of closing business on December 28, 1920.

High Cost of Living in England.

According to a press résumé of the Food Controller's monthly report, the present retail figures for food in the United Kingdom are 162 per cent above the pre-war level, with a prospect of continued high prices for the immediate future. With July, 1914 prices taken as the standard, or 100, the Labor Ministry's retail budget figure for August 1, 1920, is 262; for July 1, 1920, it was 258.

The London Economist's wholesale figures for August 1, 1920 (with July, 1914, as the standard, or 100) were: Cereals and meat, 259; textiles, 421; minerals, 282; rubber, timber, oils, etc., 279. The corresponding figures for July 1, 1920, were 261, 416, 278, and 281.

Food prices continue to show an upward tendency. Comparing the prices for August 1 with those ruling a month previous all prices rose with one exception, namely, potatoes, in which there was a fall of 24 per cent. The Ministry of Labor's index numbers of the principal food since 1914 are: 1914—July 100; 1915—January 118, July 133; 1916—January 145, July 161; 1917—January 187, July 204; 1918—January 206, July 210; 1919—January 230, July 209; 1920—January 236, February 236, March 233, April 235, May, 246, June 255, July 258, and August 262, as stated.

Steep Twills or Diagonals. Also Basket Effects.

Weave Fig 1—shows a "steep-twill," repeating on 13 Harness (straight draw) and 26 picks; being well adapted for the manufacture of worsted coatings—suitings—etc.

Weave Fig. 2—shows what we may call a "pin-check" effect (a combination of basket (8 x 8) and broken twill effects (8 x 8) both effects working, *i. e.*, exchanging) on the Checkerboard "Twill-effect."

Repeat of weave: 16 warp-threads and 16 picks. 16 Harness (straight-draw).

Weave Fig. 3—shows what we call a "broken" steep-twill running for:

60 warp threads from left to right
9 " " " " right to right

69 warp threads in repeat of weave, and
24 picks in repeat of weave.



Fig. 1

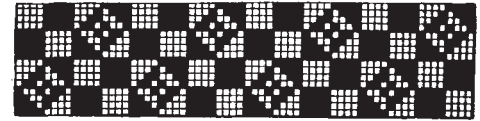


Fig. 2

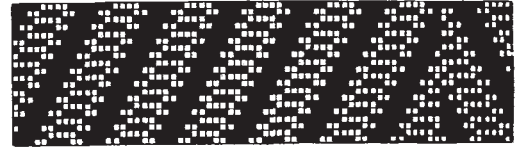


Fig. 3



Fig. 4

Weave Fig. 4—shows what we call a "stripe effect" combining two (2) different steep-twills in one effect; running for:

44 warp threads the 3 3 1 1 1 3 steep-twill,

2 2 1 1 2 2

to exchange alternately with

44 warp threads the 5 1 1 5 1 steep-twill.

2 2 1 2 2

Repeat of weave: 88 warp threads and
22 picks in repeat of weave.

Industrial Features of British Census.

Certain new industrial inquiries will be introduced in the taking of the next official British census on the last Sunday in April, 1921. It is planned to make inquiries concerning the number of people engaged in occupations and in various industries and the movements of the population in going to and from work. These statistics are designed to assist in the handling of various educational, transportation, and general labor questions. It is further intended to ask questions on the matters of dependency, pensions, health insurance, and unemployment insurance. It is said that a provisional return will probably be available by the middle of June.

The census bill now before the British Parliament provides permanently for the taking regularly of a census. Heretofore separate authority has been required every 10 years when a new census was to be taken. It is also possible, under the provisions of the new bill, to arrange for the taking of an interim quinquennial census. It will be determined in 1926 whether a census will be taken at that time.

Railroad Extension in Morocco.

Reports have been received from Paris that a convention has been concluded between the Moroccan Protectorate and a group consisting of the Paris-Lyons-Mediterranean and the Paris-Orleans Railroads, the Compagnie Générale of Morocco, and the Compagnie Marocaine for the construction of a railroad