

AFGHANS AND STOLES

What is more fun on a loom than afghans and stoles that provide such a wonderful outlet for one's love of color! And weavers can vent their enthusiasm in these presented in this lesson because they contain basic design ideas that bring the colors together easily to soften and enrich each other.

Again, these design themes can be adapted to other projects as skirt borders, drapery, and upholstery.

Afghan No. 1. "Autumn"

This is a beauty. Plain yarns are recommended because the rich colors and weave interest dominate. This project can be made on a 24-inch loom, in 2 lengths to be joined at center, or woven full width on a 44" loom. The smaller widths are much easier to handle.

Warp: Bernat's "Fabri" or	S/71	5,000 Yd. Lb.
Weavecraft 2-16 or	S/78	4,480 Yd. Lb.
"Willamette" 2-20 or	S/70	5,600 Yd. Lb.
2-18 Wool (any)	S/25	5,000 Yd. Lb.

Warp Color Arrangement: 1 end each of: Light Tan; Medium Brown; Brown Beige; Light Tan; Dark Green; and Light Green.



"Autumn"

Amount Needed (Exact) (2 Lengths on 24" Loom):

- Light Tan—1152 Yds.
- Medium Brown—576 Yds.
- Brown Beige—576 Yds.
- Dark Green—576 Yds.
- Light Green—576 Yds.

Sett: 6 Yds. long;
24 inches wide in reed;
24 Ends per inch;
Use 12 dent reed.
27" Loom waste allowance included.

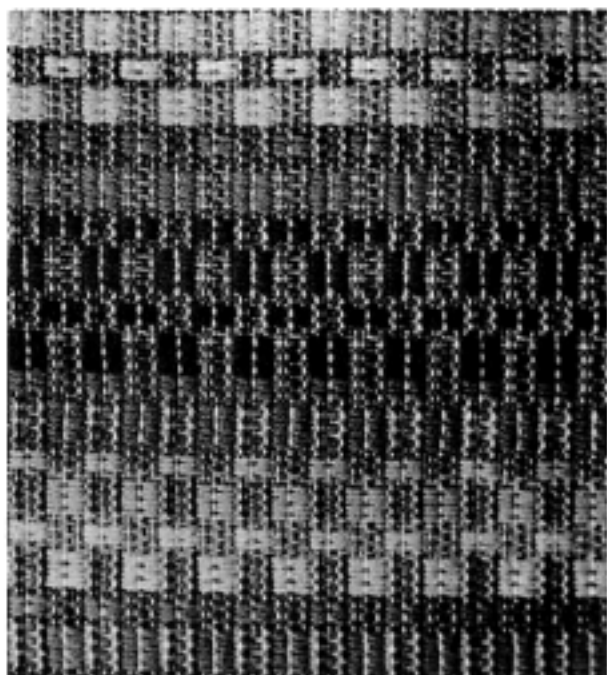
Pattern Threading:

		4	4	4	4	
	3		3	3	3	3
2	2	2	2		2	
1	1		1	1		Repeat

Weft: Spinnerin's "Candour" or S/100 (used in "Autumn")
Lily's Weave Wool or S/7
"Zephyr" or similar S/70
Amount: Total 378 shots or approx. 275 yds. of each color.

Weft Color Arrangement:

- Dark Brown;
- Red Brown (rust);
- Orange;
- Yellow;
- Light Green (apple);
- Medium Green.



Detail of "Autumn"

Treadle:

Allow 4-inch fringes. *Use beige tabby between dark value colors, and dark brown between light value colors.

Step 1. (a) 1,2 — 6 x Dark Brown (*Use beige tabby)

(b) 1,3 — 1 x }
2,4 — 1 x } Beige tabby
1,3 — 1 x }

(c) 3,4 — 3 x *Dark Brown.

(d) Repeat (b)

On the next weft color rotation begin the Dark Brown (a) by continuing on the 1,2 harness, alternating the color groups as before. In other words, the alternate groups of colors will be on identical harnesses. The large dark brown weft group in Step 7 will be joined on to the small Medium Green weft group of Step 6 by using the same treadle (1,2). See photo. This gives a very pleasant alternation in the design.

Seam: Lap one section of afghan ½ inch over the other section. Pin pattern carefully at color changes. Baste carefully and, using yarn, hem edge flat to back piece. Turn and do the same on the back side. This "flat-fell" seam is very satisfactory for joins of this kind. If one's edges are

Step 2. Repeat Step 1 using *Rust

Step 3. Repeat, using *Orange

Step 4. Repeat, using *Yellow

Step 5. Repeat, using *Light Green

Step 6. Repeat, using *Medium Green

Step 7. Repeat all from Step 1 except note the following:

Steps 1 to 7 occupy 4 inches of weft area. Repeat 9 times to complete 1 afghan length. Use muslin strip marker as described in Project Lesson No. 4 to insure pattern fit at joins. Place an 8" piece of cardboard in shed between afghan sections for 4-inch fringes.

Repeat 2nd half of afghan.

not smooth enough to permit this, make a ½-seam, matching pattern exactly, and hem edges flat at back.

Size: Finished afghan is approximately 43" wide and 82" long, plus 4" fringes.

Afghan No. 2. "Cloisonne"

Color interplay has magic in this easy-to-do version.

Design Theme: Alternated dark and light values of a color, crossed by a dark and light value in near-complementary color. (See Terrace Textures Sample Series Lesson No. 37 for color wheel explanation of the near-complements.) The large yarns in the simple tabby permit colors to show effectively between shadowy cross-bar areas of a darker color value in the same hue.

Warp: 4-Ply Worsted Wool—S/56,70,71,74,78,80, or 100.
Approx. 65 yd. oz.

Amount Required: 540 yds. each of 2 colors; total 1080 yds., plus 216 yds. darkest value for stripes.

Warp Sett: 24 inches wide in reed;
9 Ends per inch (8 per inch are alright also);
6 yds. long. Includes 27" loom waste allowance.

Color Example: Warp—Aqua and Dark Jade;
Weft—Peacock and Apple Green (or Jade Green);
Others: Peach, Pink, Reds;
Blue, Violets, Plum;
Browns, Beige, Creams or White.

Weft: 4-Ply Worsted in the darker value of the near-color.
Need about 750 yds.

Wool Boucle S/70,71,80 in about 125 yd. oz. weight. Need about 750 yds.



"Cloisonne"

Warp Plan: Across from left to right—

- (a) 1 inch (9 ends) darkest value at left edge.
- (b) 60 Ends dark and light values alternated.
- (c) Same as (a) for stripe.
- (d) Same as (b).
- (e) Same as (a).
- (f) Same as (b).
- (g) Same as (a) with darkest value on right edge. Total 216 Ends.

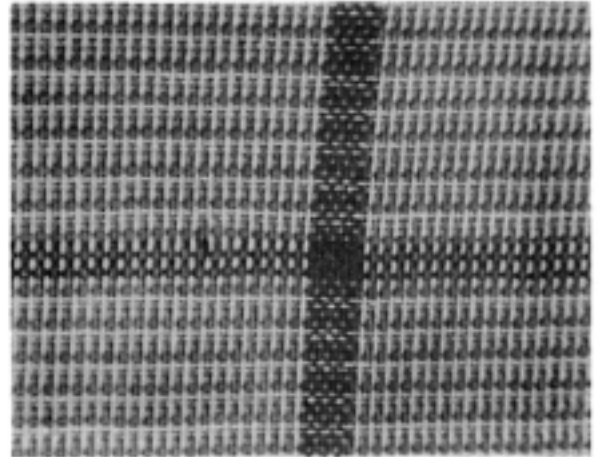
Thread: Twill 1,2,3,4 repeat.

Treadle: Allow 4-inch fringe;

- (a) Tabby 4 shots with darkest value (stripe color).
 - (b) 1,3 — 1 x Dark value weft 4-ply worsted.
2,4 — 1 x Dark value weft 4-ply worsted.
 - (c) 1,3 — 1 x Wool Boucle.
2,4 — 1 x Wool Boucle.
 - (d) Repeat (b) and (c) for 7½ inches.
 - (e) Repeat (a).
 - (f) Repeat (a) through (e) 10 times.
- Repeat all for second half of afghan in same order.

Beat: Not more than 9 shots per inch, or a bit less.

Fringes and Seam: Same as for Afghan No. 1.



Detail of "Cloisone"

Stole No. 1. "Fantasy Plaid"

Design Theme:

Random width stripe areas in warp crossed by random width weft stripes to create "out of square" blocks of crossed-over colors. Each color of warp and weft thread is paired with a fine grey tweed or deep tone of itself in tweed or tiny rough yarn in wool or rayon.

Warp: Norwegian Homespun or S/26.
2-32 Wool (or similar) S/78,77.
Fine Woolen S/61.

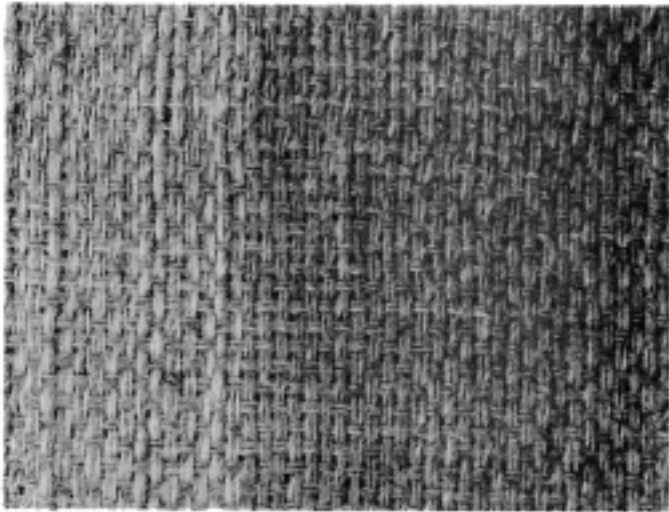
Sett: 27 inches wide in reed. Total 324 multiple or double ends.
12 double ends per inch. Use 12 dent reed (Or combine tiny yarns to make up 12 multi-thread groups per inch.)

Threading: Twill Weave: Tabby throughout. Beat lightly only.

Weft: Same as warp.



"Fantasy Plaid"



Detail of "Fantasy Plaid"

Warp Color Arrangement: Use all "greyed" or toned down colors (left to right):

2 inches moss green (with grey)	Amount: 72 yds. of each
5 inches chartreuse yellow or gold (grey)	180 yds. of each
7 inches dark maroon (medium red)	252 yds.
6 inches dark brown (grey or red)	216 yds.
5 inches chartreuse yellow or gold (grey)	180 yds.
2 inches moss green (grey)	72 yds.
<hr/>	
27 inches total warp width	

Weave: Stoles to 78 inches long, plus fringes.

Weft Color Arrangement: Same, except vary the weft areas so the crossed over colors are out of square.

Fringes: Allow 4-inch fringes. Sew into fringe long bows of brighter tones of yarns that harmonize, topped by a brilliant sequin of similar hue. The colors used with those above were: fuchsia, plum, purples.
and

Other Color Suggestions: Blues, reds, purples.
Browns, henna, rust, beige.
Jades, blues, and greens.
Pinks, browns, coral.

Stole No. 2. "Peridot" and Variations

This fabric also finds its basis in the alternated dark and light values of a color in the warp. Over this base can be laid many colors and treading effects with a "sure-to-please" result.

Warp: 2-32 Wool (or any fine wool of similar size) S/61,70,77,78.

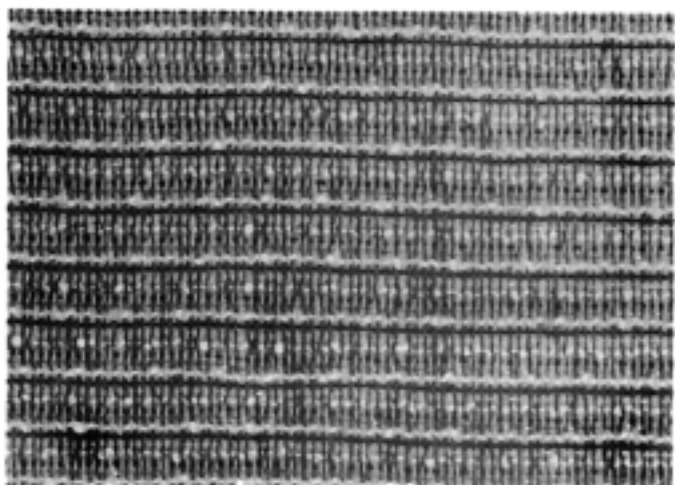
Amount: 1215 yds. of each color (for 1 stole 27" x 3 yds. — on loom).

Color Suggestions:

WARP { Peacock and Purple Navy
Moss Green and Gold
Greyed Rose and Pink
Coral and Mahogany
Very Light Green and Black
Plum and Blue-Violet

Related Colors:

WEFT { Aqua, Purples
Blue Green, Chartreuse
Maroons, Corals, Orange
Pinks, Yellows, Browns
White, Cream, Gold
Fuchsia, Purple, Pinks

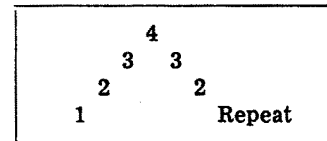


"Peridot"

Sett: 27 inches wide in reed.

30 Ends per inch. Use 15 dent reed if possible.

Pattern:



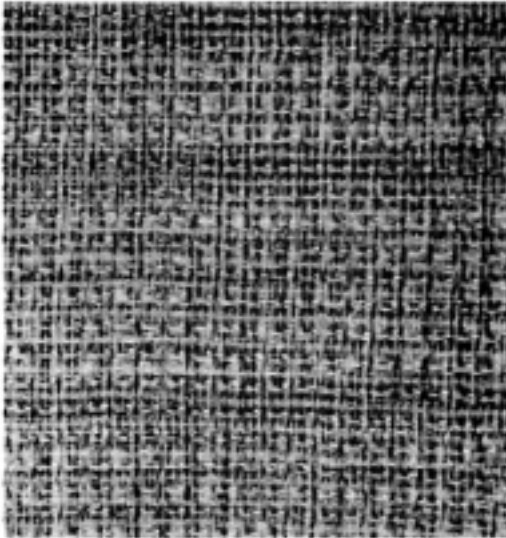
NOTE: Always thread 1 and 3 harnesses with lightest value color, and harnesses 2 and 4 with the dark value color.

Weft: Wool Boucle S/80.
 Fine Colored Metallic S/30.
 2-32 or any Fine Wool S/70/78.
 Color Tone: Light Value.
 Color Tone: Medium Value.
 Color Tone: Medium to Dark.
 Amount: 375 Yds. of each yarn.

Beat: About 6 shots of each per inch. Rather loosely.

Treadle: Tabby throughout. To begin, lay the wool boucle on the light shed, then the metal on the opposite tabby dark shed, followed by the dark value on the light shed. Continue the rotation throughout.

Colors: Use "related" colors for weft, or near tones.



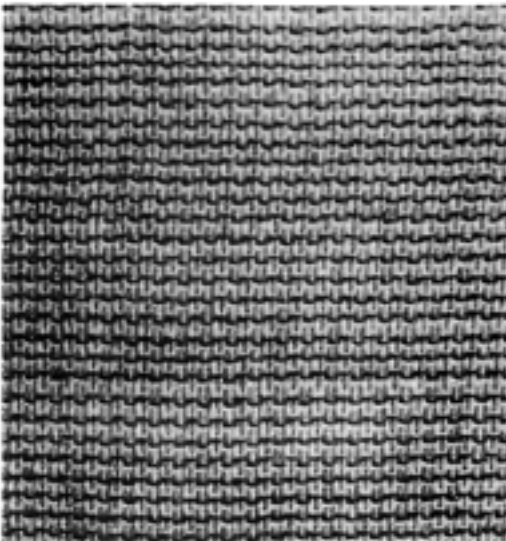
Variation A

Variation A

Warp: Same as No. 2 "Peridot".

Treadle:

{ 2,4 — 1 x Medium Value in 2-32 Wool.
 { 1,3 — 1 x Medium Value in 2-32 Wool.
 { 1,2 — 1 x Mohair Loop (or slightly larger than 2-32
 in plain yarn).
 { 4,1 — 1 x Metallic (or fine rayon in light value).
 { 1,2 — 1 x Mohair Loop.
 1,3 — 1 x 2-32 Wool (Medium Value Color).
 Repeat.



Variation B

Variation B

Warp: Same as No. 2.

Treadle:

2,3 — 1 x Light Value (like warp).
 4,1 — 1 x Light Value (like warp).
 3,4 — 1 x Dark Value (like warp).
 1,2 — 1 x Dark Value (like warp).
 Repeat.

