

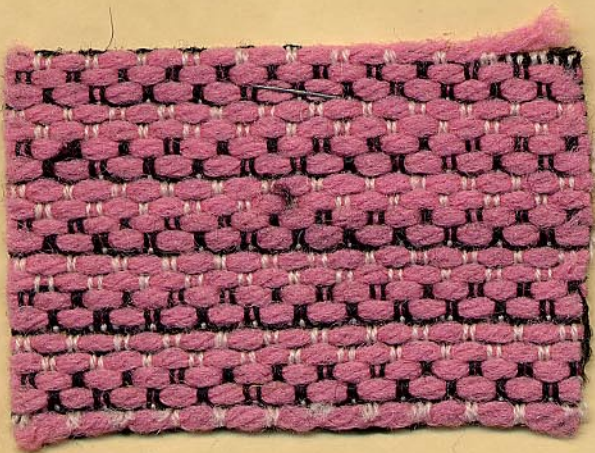
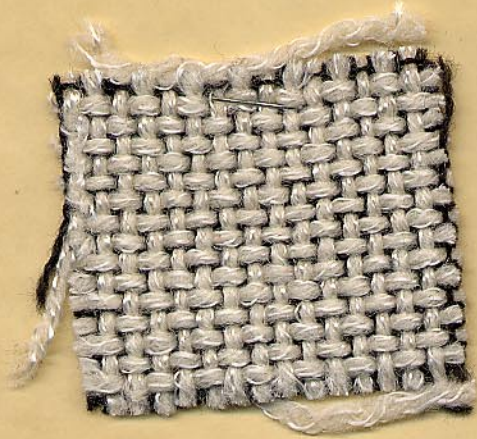
SURFACE INTEREST: Textiles of Today

by Harriet Tidball

A hand-drawn graphic element consisting of a large, thick, dark line. It starts with a large, open circle at the top left, then curves down and left to form a vertical line. This line extends down to the bottom of the page, where it turns right to form a horizontal line. The word "Portfolio" is written in a cursive, handwritten style across the vertical line, and the word "edition" is written in a similar style across the horizontal line.

Portfolio
edition

Shuttle Craft
Monograph Two
1961



III (17)	IV (27)	III (18)	V (35)
V (35)		I (4)	V (36)
V (44)		II (7)	V (41)
		V (31)	V (33)

