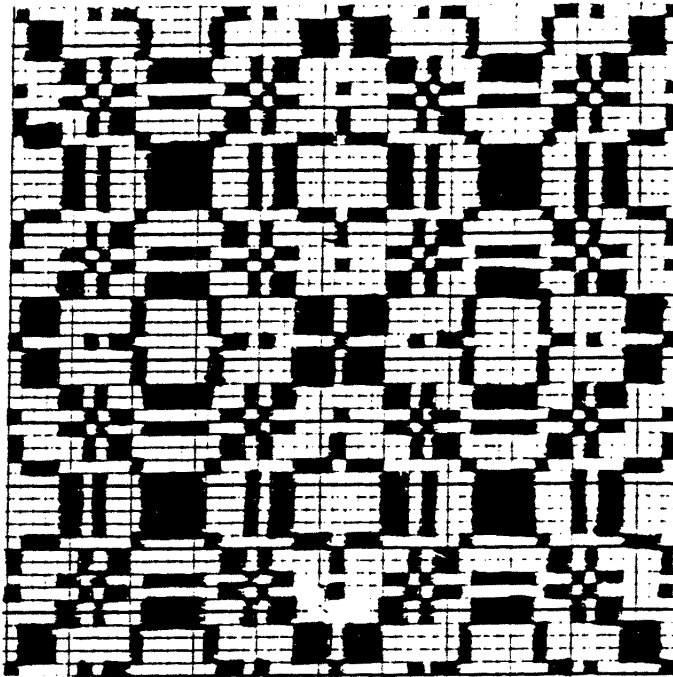


# HANDWEAVING NEWS



Three Block Patterns.

The three block pattern above was designed by Miss Erma Cox, one of the students in my class at Wayne University this last semester. It is a small dainty pattern and useful for many things. The drawing above shows two full repeats of the key draft at Figure No.1 below. The actual threading draft for the loom is given at Figure No.2. Set No.20 mercerized cotton or 20/2 cotton warp, at 30 threads to the inch. For a warp of 240 threads, repeat the threading given at Figure No.2, 5 times. Weave the pattern with No.10 or yarn of similar size in mercerized cotton. Gold and silver thread with white silk for tabby make excellent evening bags, and may be woven easily on a warp of this width.

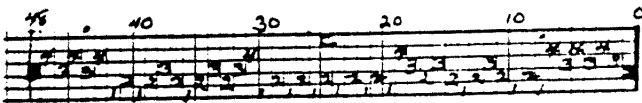
For a warp of 420 threads  
 Begin to thread at thread 30.  
 From 30 to 48 - 18 threads  
 Then 0 to 48 - 8x- 384     "  
 Then 0 to 18 once 18     "  
 Total 420

For a Warp of 600 threads.  
 Begin to thread at thread 36.  
 From 36 to 48 - 12 threads  
 Then 0 to 48 - repeat 12x- 576     "  
 Then 0 to 12 once 12     "  
 Total 600     "

Key Draft Figure No.1



Figure No.2 Threading



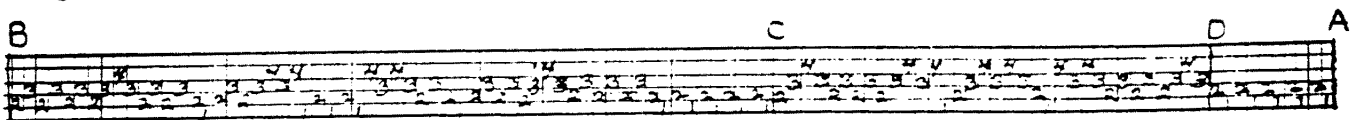
To weave pattern proceed as follows,-  
 Figure refer to levers of Structo loom,  
 but treadles can be used by using the  
 opposites.  
 14-once, 12- 5x, 34-3x, 14-2x, 34-2x, 14-3x,  
 12-2x, 34-10x, center, repeat back in same  
 order. This weaves the pattern as drawn  
 in. Note that the 23 block is not woven  
 so that you have only 3 pattern blocks.  
 It could be woven of course if desired.

The pattern below is for a warp and a full repeating weave designed by Ruth Lindeman and named "Lindy's Inspiration." Lindy's Inspiration was a weaving pupil of Miss Willie Hall, a home economics teacher in Livonia, Mich. This pattern is composed of two units, a small unit and a large unit. The small unit is a number of ways. The small unit from A to C of the large unit, and the large unit from C to B. The whole draft from A to B may be used as a pattern if desired.

For a Runner set warp at 16 threads to inch, and arrange as follows,-  
 Thread edge 1,2,3,4,- repeat 3x - 12 threads  
 Then from C to B once 60 "  
 From A to C, repeat 3x 44 threads- 264 "  
 From C to B once 60 "  
 A to D once, and 1,2,3,4, 3x 22 "  
 Thread first and last needle double 2 "  
 Warp total 448 "

For a rug set warp 28 threads to inch and arrange as follows,-  
 Thread edge 1,2,3,4, 4 threads  
 Then from C to B 60 "  
 From A to C, repeat 3x 44 308 "  
 From C to B once 60 "  
 and A to D, and edge 1,2,3,4 14 "  
 Thread first and last needle double 2 "  
 Total 448

Figure No. 3 Actual threading draft "Lindy's Inspiration."



Weave as drawn in on regular 4 harness tie-up.

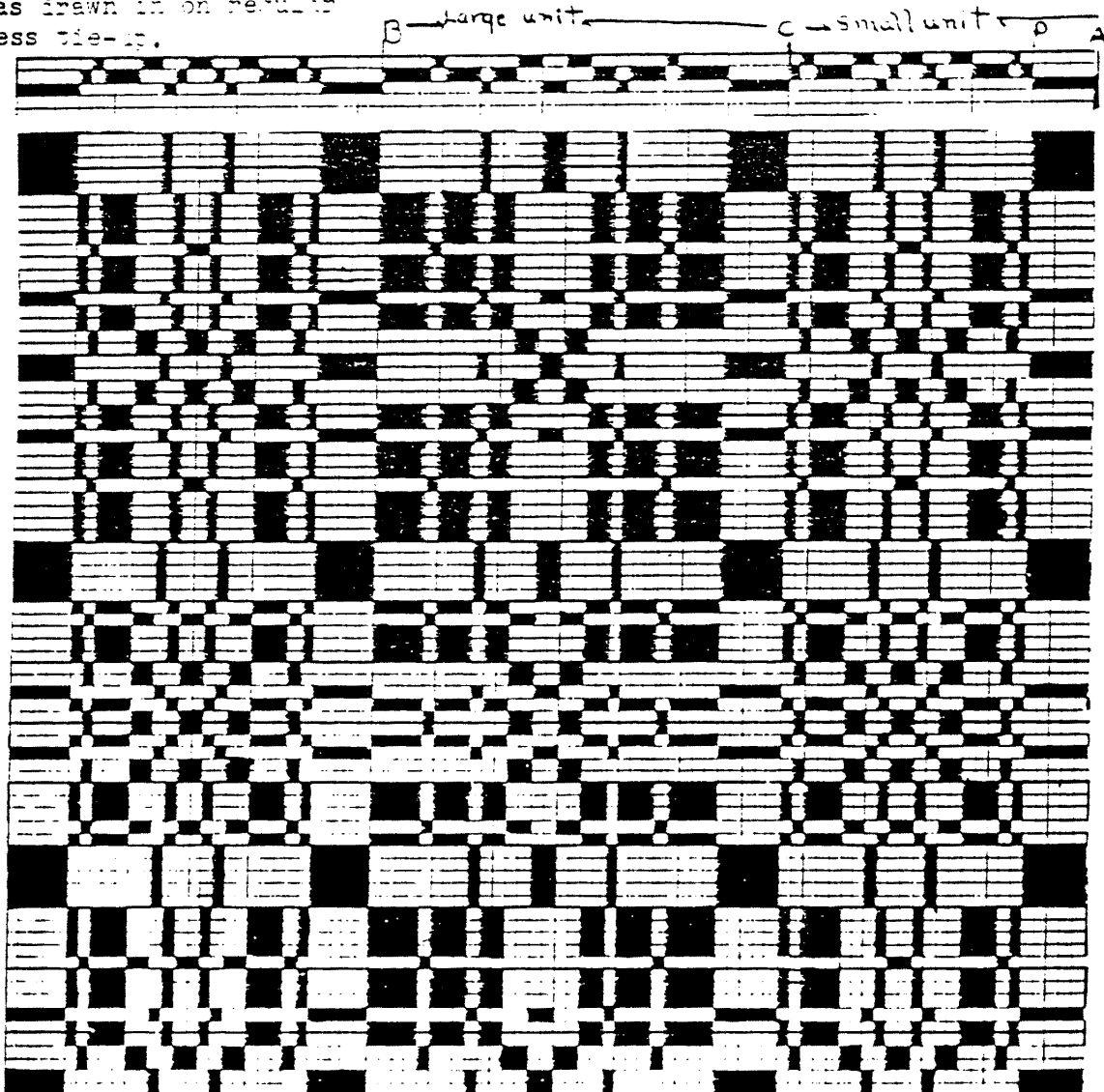
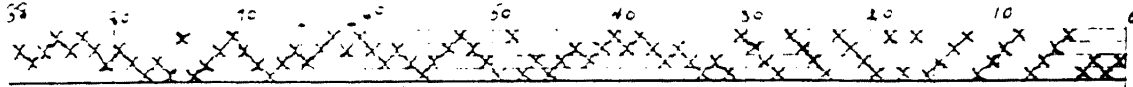
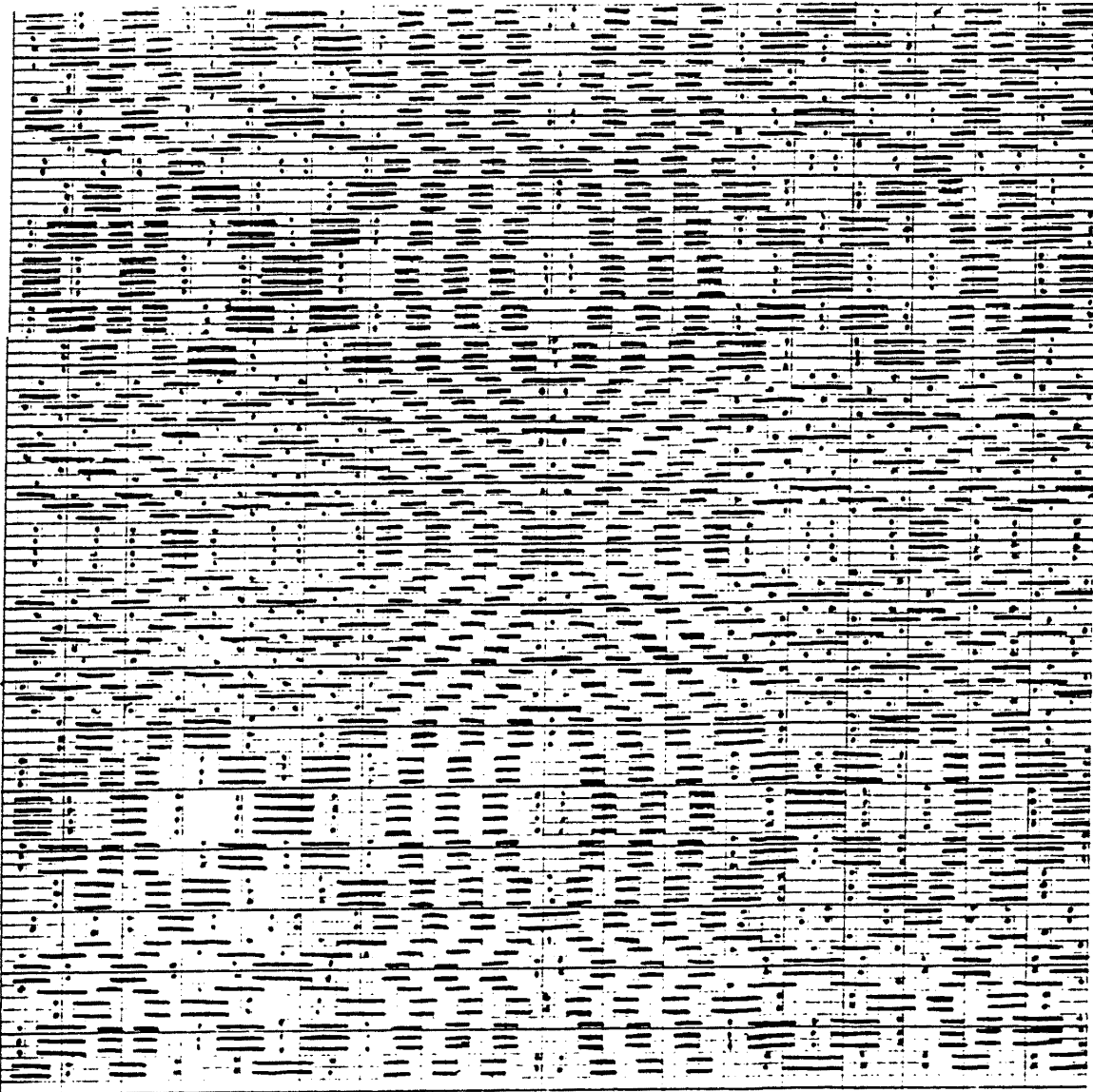


Figure No. 4 "The Spider's Web" designed by Lillian Cowley.



This is another threading draft with a repeat of 88 threads. It is based on the method of designing suggested in the News for June 1936, writing threading drafts using twill, herringbone, and rose-path. Figure No. 5 below shows this draft woven as drawn in. It has many other interesting borders, and one shown at Figure No. 6 on Page 4 for a luncheon set. To arrange this threading draft for a warp of 420 threads, thread as follows, - Begin with thread 76 to 88 equals 15 threads, then from 1 to 88 repeated 4x, then 1 to 50 once. Thread the first two heddles double and the last one double so as to take up the 3 extra threads. Warp can be 20/2 cotton, mercerized cotton No. 20, or 40/2 linen set 30 threads to the inch in the reed. Weft can be fine cotton or linen as desired. The finished width of the material set in this way is about 13 $\frac{1}{2}$ ", which is right for small towels or a luncheon set. To weave this as drawn in, with levers on Struete loom, proceed as follows, - 2&3-2x, 3&4-3x, 1&4-3x, 1&2-4x, 1&4-3x, 3&4-3x; \*2&3-once, 1&2-once, 1&4 once, 3&4-once\*\*, repeat from \* to \*\* 3x, then 2&3-4x, center of the repeat, reverse back to the beginning in the same order for the full repeat of the pattern. For a treadle loom, weave so the opposite harnesses are pulled down.

Figure No. 5. "The Spider's Web" woven as drawn in.



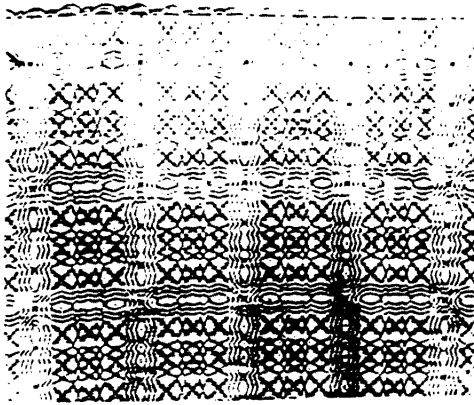


Figure No. 7

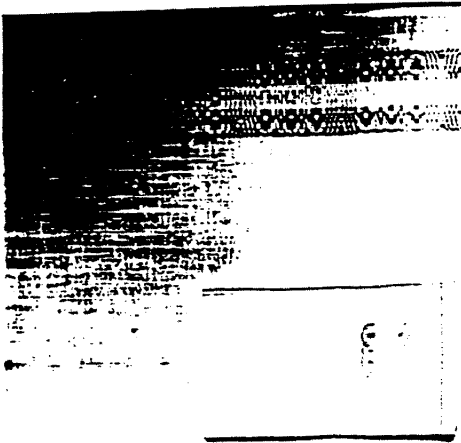


Figure No. 6

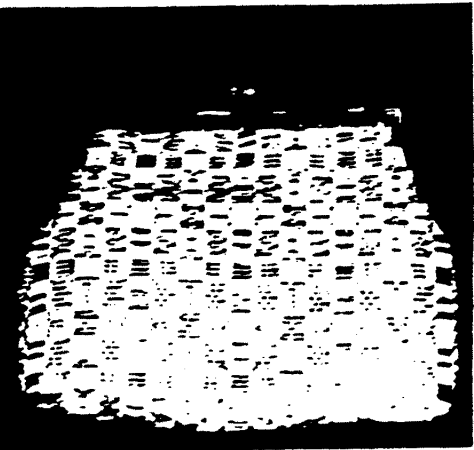


Figure No. 8

Figure No. 7 at the left shows how the pattern looks when it is woven as drawn in, or as it is threaded into the loom. This piece was woven with two colors of mercerized cotton No. 20, dark green for the pattern weft shots and light green for the tabby or plain weave between. This is an attractive threading with small over-shot skips.

At Figure No. 6 is shown a border woven for a luncheon set place mat with the napkin. This was woven on 40/2 linen with the same material for the plain weave between the borders on each end and for the center, with weaving special for the pattern shots in dark henna, blue, peach, and light green.

Weave the border as follows, - With henna for pattern 23-1, 12-1, 14-1, 34-1; 25-3x, 12-5x, 14-3x, 34-3x; with dark blue 12-5x; with peach 23-3x, 12-5x; with green 34-3x, center, repeat back to the beginning in the same order. Weave the center of the place mat in plain weave. This combination of colors was planned to go with a set of handmade pottery dishes, and is most effective. There are many other very interesting borders which can be woven on this draft as it has so many different variations in the sizes of its pattern blocks.

The napkin shown in the center of the place mat at Figure No. 6 has a small motif of the pattern picked up. The weaving of this is carried with the colors only as far as the motif is to be, instead of carrying the pattern weft all the way across the loom. Of course the plain weave goes all the way across the width as usual. There are two threads of color laid in with the warp threads on each edge. One of these is henna and the other dark blue about an 8th of an inch apart. These threads should be threaded through the same heddle as the regular warp, and can be weighted and wound on a small piece of paper and allowed to hang down at the back of the loom. Then during the weaving the same colors are put in with the weft so the color border will go all the way around the napkin.

Figure No. 8 is a small bag woven of silk and fine gold thread, by Miss Erma Cox who designed the pattern threading at Figure No. 1 on Page 1. This little pattern also has a number of interesting ways of being woven, and I hope this photo will be clear enough to show what the bag is like. It was mounted on a gold frame 5" wide.

I shall be interested to hear from any of you who try out these threading drafts. They have a good many unusual possibilities. Also I still have some of the real silk on hand which was sent you as samples last month. If you wish any of this, it would be well to write at once. Price is \$3.00 a lb.

I want also especially to thank those of you who have been telling others about the News and sending in more subscriptions. I appreciate this very much indeed.