

# HANDWEAVING

## NEWS

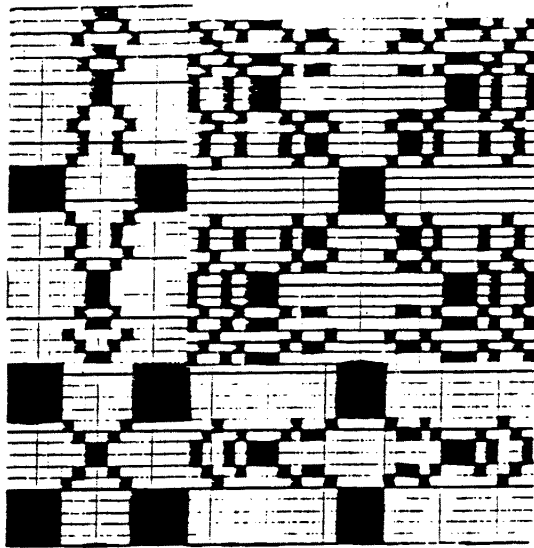


FIGURE No.2

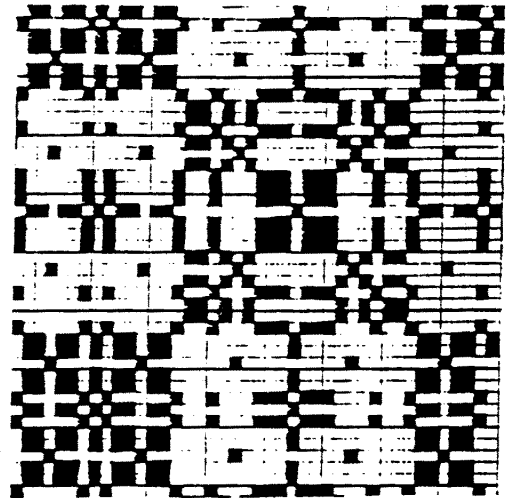


FIGURE No.1

### TWO 4 BLOCK PATTERNS.

THIS MONTH I AM GIVING TWO PATTERNS WHICH CAN BE USED AS EITHER FOUR HARNES OR 6 HARNES LOOM DESIGNS, DEPENDING ON WHETHER YOU USE THE OVER-SHOT DRAFT GIVEN, OR THE 6 HARNES "SUMMER AND WINTER" PATTERN THREADING. TO THOSE OF YOU WHO ARE NEW SUBSCRIBERS, I WISH TO SAY THAT MUCH MATERIAL WHICH WILL BE USEFUL TO YOU HAS BEEN GIVEN IN MANY OF THE PAST ISSUES OF THE NEWS. IF YOU WILL WRITE ME WHAT IS OF INTEREST TO YOU, AND WHERE YOU WISH HELP I WILL BE GLAD TO INCLUDE THAT MATERIAL, OR TELL YOU WHERE YOU CAN FIND IT. I AM TRYING TO GIVE WHAT PEOPLE ASK FOR AS MUCH AS I CAN, SO WRITE ME ABOUT WHAT YOU NEED.

ALSO DO NOT FORGET THAT THE DETROIT HANDWEAVER'S GUILD IS AGAIN PLANNING TO HAVE A SALE AND EXHIBIT AT THE INTERNATIONAL INSTITUTE, OLD WORLD MARKET. AND WE ARE COUNTING ON YOU ALL TO CONTRIBUTE WEAVING FOR SALE TO MAKE THIS A SUCCESS. LAST YEAR WE FOUND THAT SMALL INEXPENSIVE ARTICLES SOLD BEST. LET US HEAR FROM YOU BY THE 1ST OF SEPTEMBER AS TO WHAT YOU WILL SEND. IT MUST REACH US BEFORE OCT. 1. IN ORDER TO PASS OUR JURY.

BOTH OF THE PATTERN EFFECT DESIGNS THAT ARE GIVEN ABOVE WERE DESIGNED BY LILLIAN COWLEY, AND ARE COMPOSED OF TWO FIGURES IN ONE REPEAT, FOR A 4 BLOCK PATTERN. THEY WILL BE USEFUL FOR BORDERS FOR TOWELS, BAGS OR LUNCHEON SETS, AND OFFER MUCH VARIETY IN THE WEAVING.

WARP 20/2 COTTON, 420 WARP ENDS.  
WEFT MERCERIZED COTTON No.20 FOR THE PLAIN WEAVE WEFT, 6 STRAND COTTON FOR

THE PATTERN WEAVING.

SLEY REED 15 DENT, 2 THREADS IN A DENT.

HOW TO ARRANGE PATTERN AT FIGURE No.1 FOR THE 4 HARNES LOOM. THREADING DRAFT ON PAGE 2, FIGURE No.3.

ONE REPEAT EQUALS 60 THREADS.

420 DIVIDED BY 60 IS 7x. SO REPEAT THE PATTERN DRAFT EXACTLY 7x FOR THE FULL WIDTH OF THE LOOM.

HEDDLE COUNT	I	II	III	TOTAL
	GROUP	GROUP	GROUP	
HARNES 1	2	11	1	X 7- 98
" 2	4	11	5	X 7-140
" 3	7	2	7	X 7-112
" 4	4	2	4	X 7- 70
	17	26	17	420

### REGULAR 4 HARNES LOOM

LAMM	TIE-UP					
" 4	4		4			
" 3		3		3		
" "			2	2		
" "	1	1	1	1		
TREADLE	1	2	A	B	3	4

THE 6 HARNES FOLDING FLOOR LOOM IS A JACK TYPE LOOM, THE HARNESSES RISE WHEN THE FOOT IS PLACED ON A TREADLE. DIRECTIONS GIVEN ARE THE ORDER OF USING THE TREADLES, ON THIS LOOM.

ORDER OF TREADLING, - TREADLE 1-ONCE, 2-5x, 3-1, 4-2x, 3-1, 2-2x, 3-4x, 2-1, 1-5x, 4-2x, 1-3x, 2-2x, 1-2x, 2-2x, 1-3x, 4-2x, 1-5x, 2-1, 3-4x, 2-2 3-1, 4-2x, 3-1, 2-5x, BEGIN AT BEGINNING FOR NEXT REPEAT.

USE A SHOT OF THE PLAIN WEAVE WEFT AFTER EACH OF THE ABOVE PATTERN WEFT SHOTS. FOR THIS USE TREADLE A, THEN B EACH TIME.

FIGURE No.3 THREADING DRAFT FOR PATTERN No.1 PAGE 1.

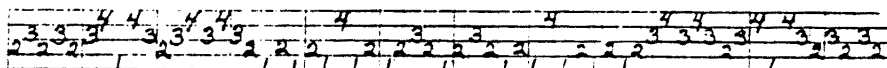
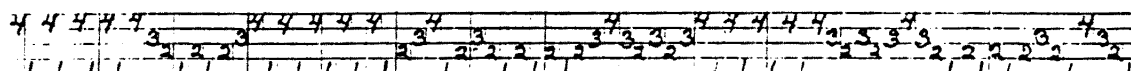


FIGURE No.4 THREADING DRAFT FOR PATTERN No.2 PAGE 1.



MANY INTERESTING BORDERS CAN BE WOVEN ON THE PATTERN AT FIGURE No.1, THE THREADING OF WHICH IS AT THE TOP OF THIS PAGE. YOU CAN TRY OUT THE ORDER OF TREADLING GIVEN AND THEN MAKE UP BORDERS OF YOUR OWN BY USING THE TREADLES IN ANY ORDER YOU WISH, AND USE EACH TREADLE AS MANY TIMES AS YOU WISH. ALWAYS USE THE PLAIN WEAVE ALTERNATELY AFTER EACH SHOT OF THE PATTERN WEFT

THREADING DRAFT FOR PATTERN No.2 IS GIVEN AT FIGURE No.4 ABOVE. FOR THIS, YOU CAN USE THE SAME THREADS AS FOR PATTERN No.1.

HOW TO ARRANGE PATTERN THREADING DRAFT FIGURE No.4 FOR A WARP OF 420 THREADS.

ONE REPEAT EQUALS 76 WARP THREADS. DIVIDE 420 BY 76, TO EQUAL 5x PLUS 40 OVER TO BALANCE THE PATTERN THREADING ON EACH SIDE OF THE CENTER, WE USE ONE-HALF OF 40, OR 20 THREADS, AT THE BEGINNING OF THE THREADING, AND 20 MORE AT THE END OF THE THREADING.

SO WE WILL START TO THREAD THIS PATTERN AT E OF THE DRAFT. THREAD FROM E TO A, ENDING ON THE THREAD ON HARNESS 2 AT A.

E TO A - 20 WARP THREADS  
 A TO B 5x 76-380 " "  
 A TO E - 20 " "  
 TOTAL 420

DIVIDE THE THREADING INTO GROUPS 1,2,3,4. TO MAKE IT EASY TO THREAD AND TO GET THE HEDDLE COUNT BEFORE YOU BEGIN TO THREAD.

GROUPS	HEDDLE COUNT				TOTAL
	I	II	III	IV	
HARNESS 1	5	5	8	6 x 5 + 9	129
"	2	8	4	3 x 5 + 16	111
"	3	5	5	2 x 5 + 11	81
"	4	2	6	5 x 5 + 4	99
	20	20	20	16	420

THE LAST COLUMN BEFORE THE TOTAL IS THE E TO A GROUP WHICH IS REPEATED 2x, ONCE AT THE BEGINNING, AND AGAIN AT THE END OF THE THREADING.

ALWAYS USE THE GROUPS WHEN YOU ARE ACTUALLY THREADING THE LOOM. COUNT OFF THE NUMBER OF HEDDLES IN EACH GROUP, AND THEN

THREAD IT. CHECK IT EACH TIME BEFORE YOU GO ON TO THE NEXT GROUP. IF YOU DO THIS, YOU WILL NOT MAKE DISAPPOINTING THREADING MISTAKES. IT IS POOR, SLOPPY, CRAFTSMANSHIP TO HAVE A LOOM FULL OF THREADING MISTAKES. AND THERE IS REALLY NO EXCUSE FOR IT, IF YOU TAKE THE TIME AND PATIENCE TO BE VERY CAREFUL DURING THIS PROCESS. THIS SYSTEM MAY BE NEW TO SOME OF YOU, BUT IT WILL BE WORTH YOUR WHILE TO DO THINGS THIS WAY.

ORDER OF TREADLING PATTERN No.2

TREADLE 1-ONCE, 2-1, 3-1, 4-1, 2-1, 1-5x, 2-1, 3-1, 2-4x, 3-1, 4-8x, 3-1, 2-4x, 3-1, 2-1, 1-5x, 2-1, 1-1, 3-1, 2-1, 1-1. THIS IS ONE FIGURE. THE OTHER FIGURE IS WOVEN, -

TREADLE 4-9x, 3-1, 2-1, 1-4, 2-1, 3-1, 4-9x. FOR THE COMPLETE REPEAT, BEGIN AGAIN AT THE BEGINNING OF THE TREADLING ORDER. BOTH OF THESE THREADING WILL BE USEFUL FOR PLACE MATS OR SMALL TOWELS.

ANNOUNCEMENT OF WEAVING EXHIBIT AT

SEARS ROEBUCK Co. STATE ST.

STORE, CHICAGO, ILL APRIL 21 -25.

I AM PLEASED TO ANNOUNCE THAT FROM APRIL 21 TO 25, AN EXHIBIT OF HANDWEAVING WAS HELD AT THE SEARS ROEBUCK Co, STATE ST. STORE. I HAD AN OPPORTUNITY TO MEET AND DISCUSS LOOMS, THREADS, ETC. WITH MANY OF YOU AT THAT TIME. MORE DETAILS OF THIS WILL BE GIVEN IN THE NEXT COPY OF THE NEWS. IT IS ALWAYS A PLEASURE TO MEET AND KNOW THOSE WITH WHOM I HAVE CORRESPONDED FOR A LONG TIME.

I WOULD LIKE TO REMIND THOSE OF YOU WHO ARE NEW SUBSCRIBERS TO THE NEWS THAT I LIKE TO HAVE YOU WRITE ME ABOUT YOUR WEAVING PROBLEMS. IF I KNOW WHAT YOU NEED I CAN MAKE THE NEWS MORE HELPFUL TO YOU.

I RECENTLY HAD A VERY FINE LETTER FROM MRS. MECK OF LINCOLN, NEBRASKA. SHE SAYS THERE THEY HAVE ABOUT 40 MEMBERS OF A WEAVING GROUP, 25 OF THESE VERY ACTIVE. I WOULD LIKE TO KNOW OF OTHER GROUPS, AND HAVE NEWS OF WHAT THEY ARE DOING.