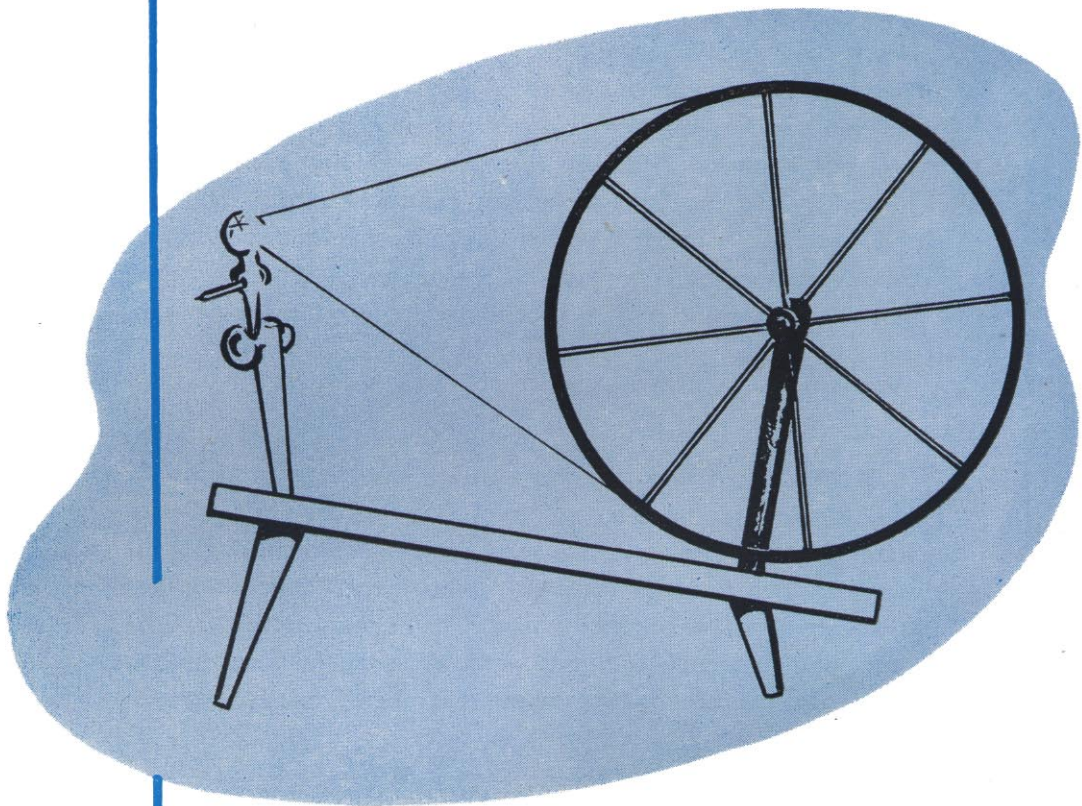


**PRACTICAL**  
**WEAVING SUGGESTIONS**



VOL. 1-58

for

**HOMESPUN**

**YARNS** \_\_\_\_\_

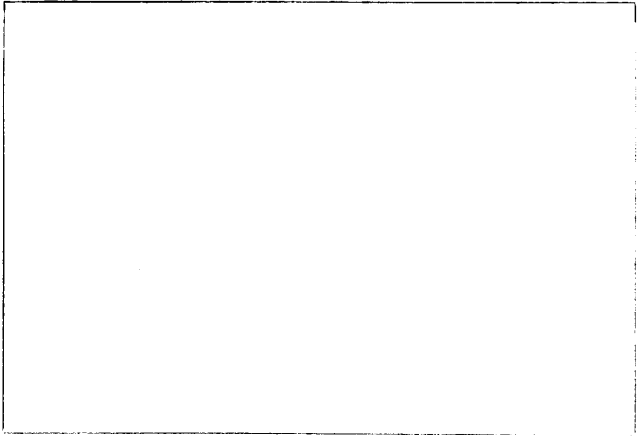
## INTRODUCTION

A 1956 issue of 'Practical Weaving Suggestions' introduced the Lily Homespun Yarns. The three weights, Lamb's Wool, Suiting and Tweed were described, and drafts were given for two pieces of suit material. The interest in this Homespun Yarn was immediate so we asked Miss Winogene Redding to develop some original color combinations and patterns for future publication. The very fine results of her work may be judged by the drafts and weaving directions which make up this issue of 'Practical Weaving Suggestions'. And so that you may further enjoy this issue, by seeing some of the material produced according to these drafts, swatches of three patterns are attached.

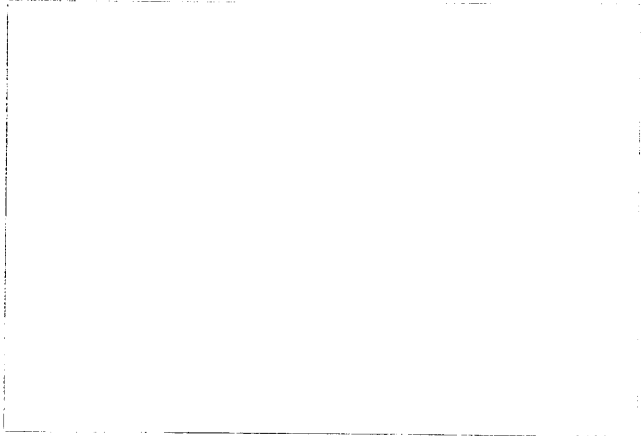
As you read the drafts and weaving directions prepared by Miss Redding please note that yarn estimates are for a 10 yard warp, 33 to 34 inches in the reed, which should provide sufficient finished material for a suit or top coat. Also note that there are three weft plans for both the Green, Black & Gray warp, and the Black & Brown warp. Warping instructions and warp yarn estimates are not repeated for the #2 and #3 patterns on these warps.

**For a rising shed loom, tie the blank spaces instead of X's as given for a sinking shed loom**

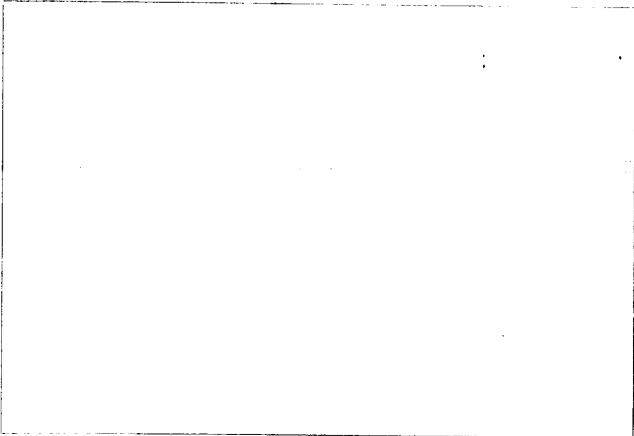
Designs by  
**MISS WINOGENE REDDING, Editor**  
**Reddigraphs**  
Arrowcraft Shop  
Gatlinburg, Tennessee



**GREEN, BLACK AND GRAY WARP  
SAMPLE NO. 1**



**BLACK AND BROWN WARP  
SAMPLE NO. 2**



**GRAY SAMPLE WARP NO. 3**

# GREEN, BLACK AND GRAY WARP

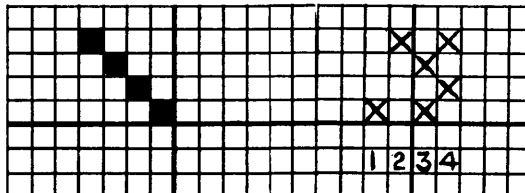
## WARP . . .

6 ends Oxford Gray — 88 Suiting Yarn  
 6 " Hunter Green — 59 Lamb's Wool  
 2 " Dk. Green — 59 Tweed Yarn  
 2 " Gray — 86 Suiting Yarn  
 Repeat 56 times — 10 yards

REED . . . 15 dents to the inch — Thread in dents —

	Oxford Gray 2, 1, 2, 1
	Hunter Green 2, 1, 2, 1
1 repeat	Dk. Green Tweed 1, 1
11 dents	Gray Suiting 2

## . . . TIE UP No. 1 . . .



SINKING SHED

TREADLING No. 1 . . . Green, Black and Gray (Sample No. 1 Page 3)

1 time each treadle — beat 18 picks per in.  
 Dk. Green — 59 Tweed — 1, 2, 3, 4 and repeat

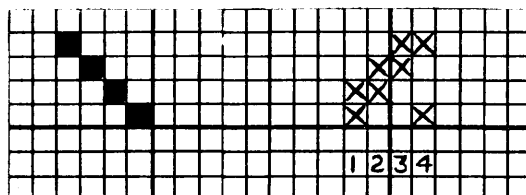
Order for Warp . . . 10 yards — Nos. 1, 2 and 3

5 - 4 oz. Tubes Oxford Gray — 88 Suiting — Art. 150S  
 4 - 4 oz. " Hunter Green — 59 Lamb's Wool — Art. 150L  
 2 - 4 oz. " Dk. Green — 59 Tweed — Art. 150T  
 2 - 4 oz. " Gray — 86 Suiting — Art. 150S

Order for Weft No. 1

10 - 4 oz. Tubes Dk. Green Tweed — 59

## TIE UP No. 2 and 3



SINKING SHED

**TREADLING No. 2 . . .** 1 time each treadle — beat 24 picks per inch

**HUNTER GREEN — 59 LAMB'S WOOL**

1  
2  
3  
4 } 2 times

**OXFORD GRAY — 88 SUITING YARN**

1  
2  
3  
4 } 2 times

**REPEAT**

**Order for Weft**

5 - 4 oz. Tubes Hunter Green — 59 Lamb's Wool — Art. 150L  
6 - 4 oz. " Oxford Gray — 88 Suiting — Art. 150S

---

**TIE UP NO. 3**

(Shown at Bottom Page 4)

**TREADLING No. 3 . . .** 1 time each treadle — beat 18 picks per inch

**GRAY — 87 TWEED**

1  
2  
3  
4 } 2 times

**DK. GREEN — 59 TWEED**

1  
3 } 2 times

**REPEAT**

**Order for Weft**

7 - 4 oz. Tubes Gray — 87 Tweed — Art. 150T  
4 - 4 oz. " Dk. Green — 59 Tweed — Art. 150T

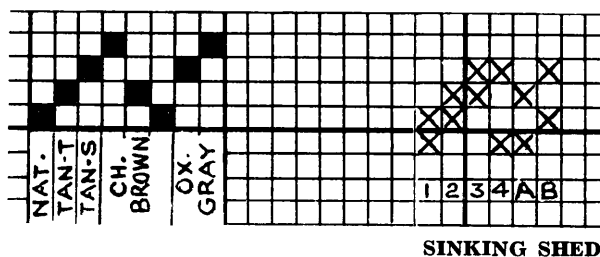
# BLACK AND BROWN WARP

## WARP . . .

2 ends Oxford Gray — 88 Suiting  
 3 " Chocolate — 124 Lamb's Wool  
 1 " Tan — 82 Suiting  
 1 " Tan Heather — 118 Tweed  
 1 " Natural — 4 Lamb's Wool  
 100 Repeats — 10 yards

REED . . . 15 dents to the inch — Thread in dents — 2, 2, 1 etc.

## TIE UP No. 1 and 2



SINKING SHED

## TREADLING No. 1 . . . Black and Brown (Sample No. 2 Page 3)

1 time each treadle — beat 24 picks per in.  
 Oxford Gray — 88 Suiting — 3, 4  
 Chocolate — 124 L. Wool — 1, 2  
 Tan Heather Tweed — 118 — 3  
 Natural — 4 Lamb's Wool — 4  
 Repeat

## Order for Warp . . .

3 - 4 oz. Tubes Oxford Gray — 88 Suiting — Art. 150S  
 3 - 4 oz. " Chocolate — 124 L. Wool — Art. 150L  
 2 - 4 oz. " Tan — 82 Suiting — Art. 150S  
 2 - 4 oz. " Tan Heather — 118 Tweed — Art. 150T  
 1 - 4 oz. " Natural — 4 L. Wool — Art. 150L

## Order for Weft No. 1

2 - 4 oz. Tubes Tan Heather Tweed — 118  
 3 - 4 oz. " Oxford Gray — 88 Suiting  
 3 - 4 oz. " Chocolate — 124 Lamb's Wool  
 1 - 4 oz. " Natural — 4 Lamb's Wool

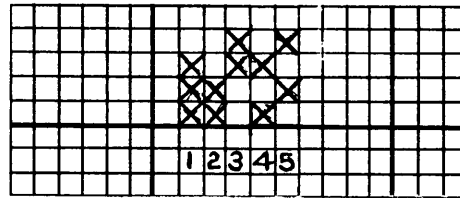
## TREADLING No. 2 . . . 1 time each treadle — beat 22 picks per inch

Tan Heather — 118 Tweed — B  
 Tan Suiting — 82 — 3  
 Chocolate — 124 L. Wool — A  
 Repeat

**Order for Weft**

- 4 - 4 oz. Tubes Tan Heather — 118 Tweed — Art. 150T
- 3 - 4 oz. " Tan — 82 Suiting — Art. 150S
- 3 - 4 oz. " Chocolate 124 L. Wool — Art. 150L

**TIE UP NO. 3**



**SINKING SHED**

**TREADLING No. 3 . . .** 1 time each treadle — beat 22 picks per inch

- Tan Heather — 118 Tweed — 1, 4, 2
  - Chocolate — 124 L. Wool — 5
  - Dk. Green — 59 Tweed — 3
- Repeat

**Order for Weft**

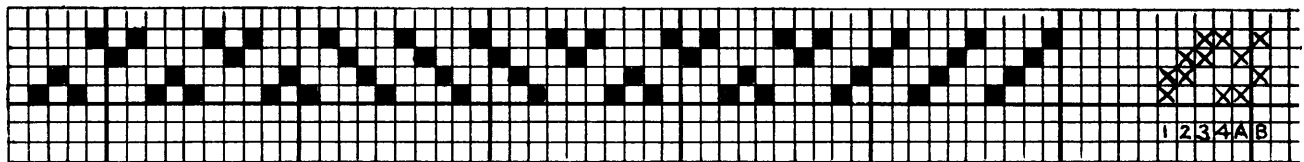
- 6 - 4 oz. Tubes Tan Heather — 118 Tweed — Art. 150T
- 2 - 4 oz. " Chocolate — 124 L. Wool — Art. 150L
- 3 - 4 oz. " Dk. Green — 59 Tweed — Art. 150T

**GRAY WARP**

**WARP . . .** Gray — 86 Suiting — Art. 150S — 680 ends — 10 yards

**REED . . .** 15 dents per inch — Thread in dents — 2, 1, 1, etc.

**TIE-UP**



**SINKING SHED**

**TREADLING . . .** 1 time each treadle — 1 repeat given — beat 28 picks per in.

- Oxford Gray — 88 Suiting — 3, 4, 3
- Gray — 87 Tweed — B
- Natural — 4 Lamb's Wool — 2, 1, 2
- Gray — 87 Tweed — B

**Order for Warp . . .** 9 4 oz. Tubes Gray — 86 Suiting Yarn, Art. 150S

**Order for Weft**

- 4 - 4 oz. Tubes Oxford Gray — 88 Suiting Yarn
- 3 - 4 oz. " Natural — 4 Lamb's Wool — Art. 150L
- 3 - 4 oz. " Gray — 87 Tweed Yarn — Art. 150T

A paragraph on the finishing, or processing, of handwoven wool material which appeared in 'Practical Weaving Suggestions' Vol. 3-56 is repeated here as we continue to receive many questions on this subject.

Material made from any wool of this type must be processed and shrunk before it goes to the tailor. There are many schools of thought on the subject of this finishing. Any one of them is satisfactory if the oil that was in the wool when it was spun is completely removed, if the material is fulled and milled to a soft finish, and if all shrinkage that may be expected has occurred. We believe in soaking the material for several hours, then washing in suds made from mild soap flakes and rather warm water to be followed by a thorough rinsing. Repeat as necessary to remove all oil, being sure that the last rinse removes all soap. This may be done in a washer of the tumbler type but not in one with an agitator that might catch the material. Do not wring, twist or crease but let drip dry on a stretcher, over a long stick, or from a tight clothes line. Some weavers roll wool material on a loom beam while still damp and leave for several days to complete shrinkage. On page 31 of 'Designing on the Loom' by Mary Kirby you will find an interesting chapter on 'Finishing' which includes the suggestion that lengths of wool material be washed in the bath tub by tramping to force the water and soap suds through the material. We look forward to trying this as it seems a good idea.

Some weavers seem to feel that there is some special difficulty about weaving with wool. True enough there is more elasticity in a wool yarn than in cotton, and the handling of it requires a little different technique, but it is certainly not difficult. These suggestions are made with the hope that they may be of help to those who have not done much weaving with wool.

With yarns of the same character, such as the three Lily Homespuns, mix any weight and color that will give you the material you want.

Always make a short, narrow sample warp to try out yarn combinations, colors, sett and beat before making your big warp.

Sample warps should not be judged until they have been through the same finishing that the big warp will receive. Shrinkage should be checked at this time.

Draw the weft in place, do not beat too hard nor sett too close. Remember that wool material draws up and fills in when off the loom and finished.

Strive for a uniform beat to avoid dark lines across material and let the loops form at the selvage to reduce drawing in.

Do your measuring with tension released and do not leave tension on when away from the loom.

We hope those who have not tried it will join us soon.



**Lamb's Wool—**  
*for lightweight ladies' Suits and Coats and Men's Dress Sport Coats.*



**Tweed Yarns—**  
*for Sport Coats and Topcoats.*



**Suiting Yarn—**  
*for Suits, Sport Coats and Light Topcoats.*

**YARN SAMPLES SENT UPON REQUEST**

**Order All Your HAND WEAVING  
Supplies From the HAND WEAVERS' HEADQUARTERS**

**LILY MILLS COMPANY  
Shelby, N. C.**