

THE WEAVER'S QUARTERLY

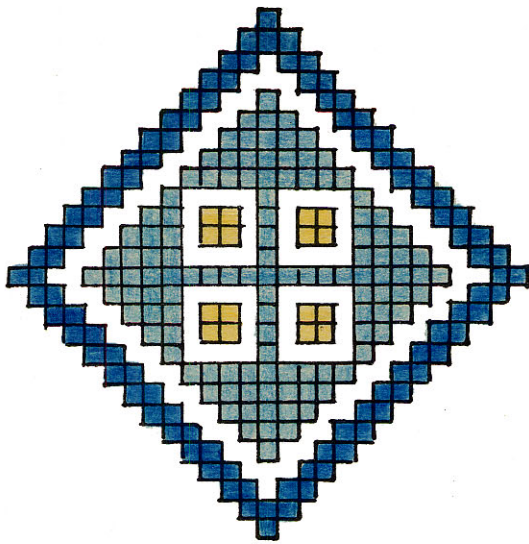
Kate Van Cleve
Myra L. Davis

Volume 2 Number 4

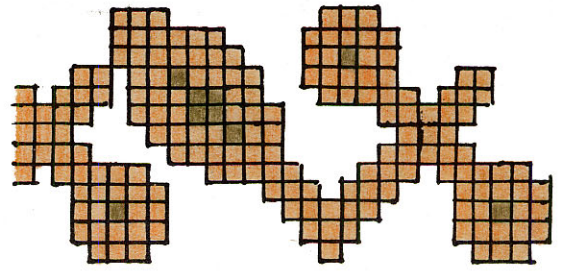
October 1936

Copyright
1936

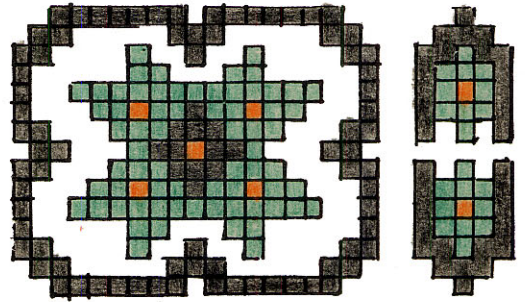
Kate Van Cleve and Myra L. Davis



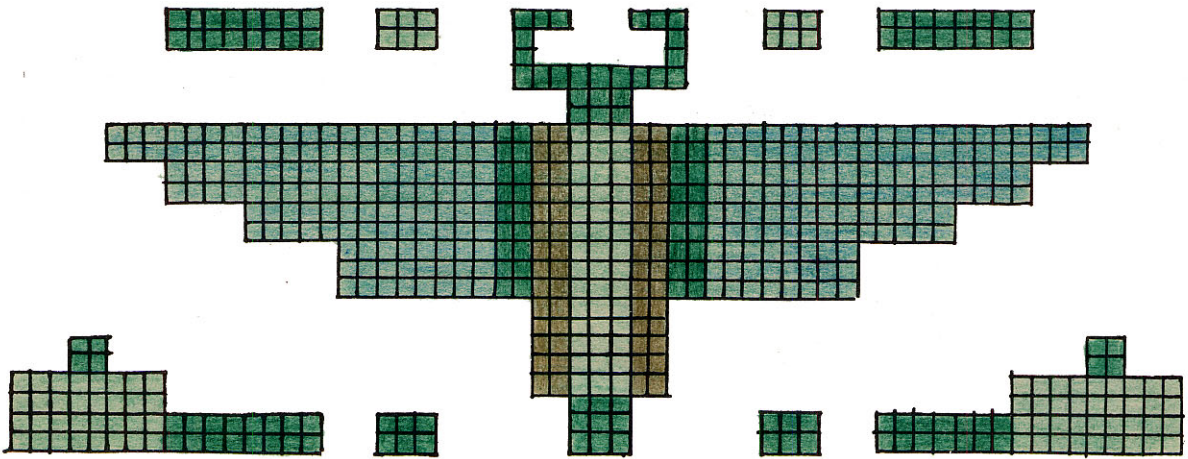
1



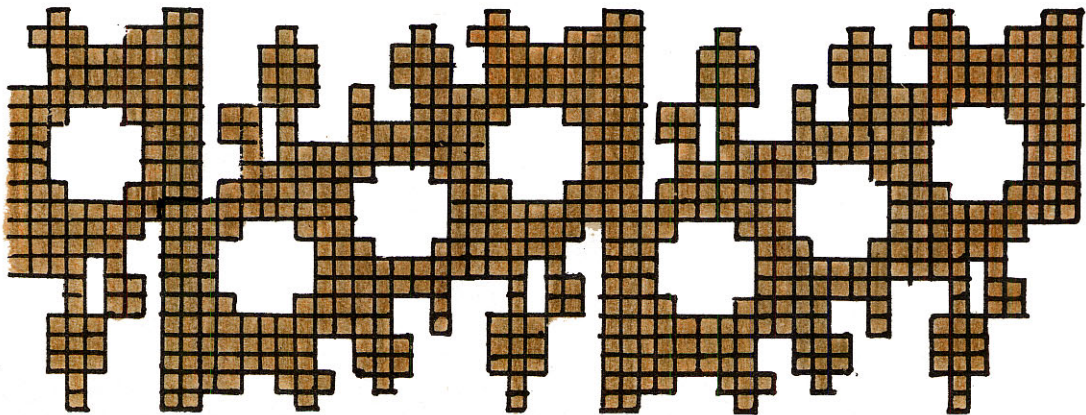
2



3



4



5

NECK SCARF

Warp - Golden brown Perle cotton No. 20, 250 ends
set 24 ends to the inch.

Weft - Dark brown Weaving Special No. 627.

Design - No. 6 dark burnt orange Raytone No. A 239.

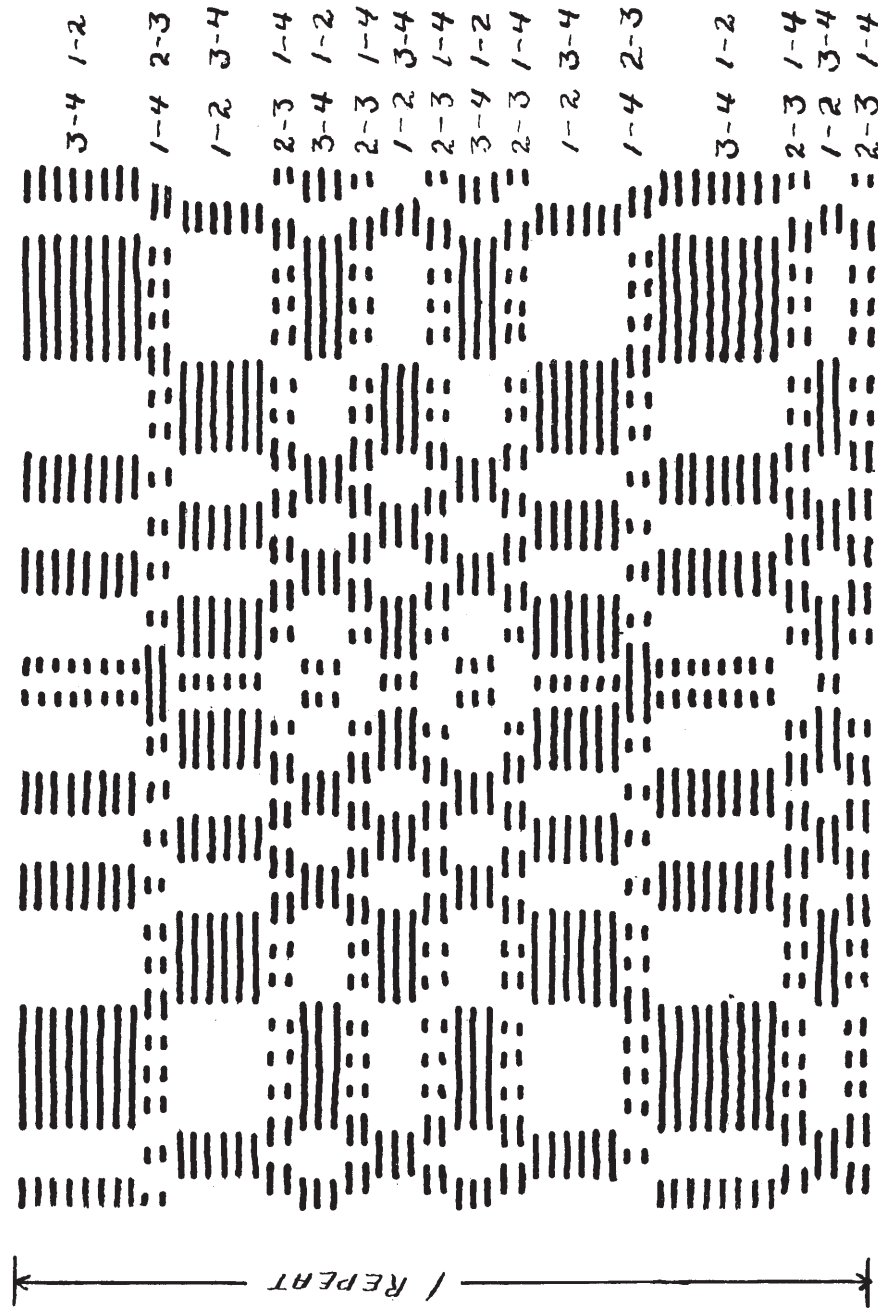
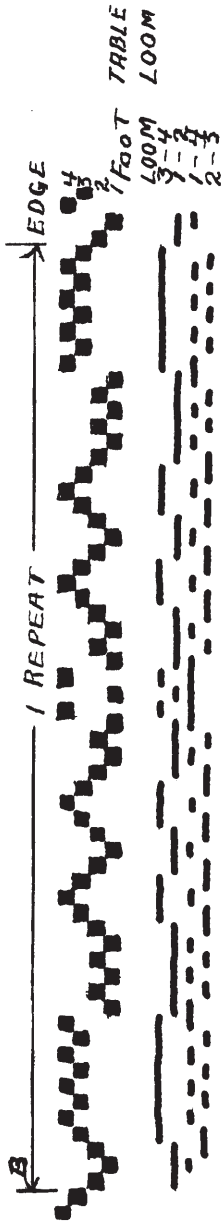
These are all Bernat's yarns.

Weave two inches plain with the dark brown, beating lightly, then begin the design in the laid-in weave with the dark burnt orange Raytone, allowing five warp threads to each square in the design and using the two full repeats ending as shown by the heavy line at the left. The five warp threads to each square will, on the 250 warp threads, give a margin of five threads on each side of the design. Three rows of the Raytone may be spaced through the center of the scarf if desired. Repeat the border and the two inches plain on the other end.

The scarf should be woven 50" long, this allows for shrinkage. Finish with a quarter inch hem.

Design No. 1 may be used for tray sets, bureau sets or small table squares. Nos. 2 and 3 for chair sets, towels or small runners, and No. 4 for bags or runners. They all work out well in either the Swedish Embroidery or the laid-in weave.

VARIATION OF No. 40 JOHN LANDIS BOOK PENN. ART MUSEUM



KVC

ZIPPER PURSE

This small design, a variation of one of the John Landes patterns in the Pennsylvania Art Museum, will be found most useful for many small articles. The cigarette cases given in October 1935, the small cases in the October 1932 numbers of the Quarterly.

Materials -- a grey green warp 20/2 #1016 on Bernat's color card or light tan 20/2 using a wool as fine as Fabri for the pattern and binder. A light tan #624 and dark brown #627 or light and dark green #753 and #755 to be used in the green warp. Henna #645 and grey green #634 are very good in the tan warp.

Warp -- a chain of 247 threads will make a zipper purse about 7½" and requires a seven-inch zipper.

Threading -- Edge 3-4-1-2

Three repeats of the pattern as given in the draft.

Second edge -- omit the last thread of the repeat through the second heddle and add 4-3.

A double thread in each edge is allowed for in the warp.

Weaving -- Weave ½" of mercerized cotton for a heading. Start weaving the block 3-4 in one tone of color and the central pattern unit 1-4, 1-2, 2-3, 3-4, 2-3, 1-2, 2-3, 3-4, 2-3, 1-2, and 1-4 in the second tone using a binder of light tan Fabri #135 with the two tones of green, or Fabri #622 with the brown or henna combination to pull it all together and prevent its being spotted or striped.

Zipper Purse (Continued)

Continue weaving until you have twelve inches or as near that as the finished pattern will allow, ending with the block 3-4.

This will shrink and make the finished purse five inches. This also allows one-half inch at the top for the zipper.

CIGARETTE CASE II

Quarterly October 1935

Warp -- 205 threads were required. As you have 247 threads already on your loom for the zipper purse this could be utilized for an inch hem or drop off sixteen threads from each edge of your pattern so as to keep it balanced. This leaves the fine diamond pattern on the edge.

Weave -- $\frac{1}{2}$ " for the heading
4" of the pattern
 $\frac{1}{2}$ " for the heading

UNDER ARM PURSE WITH GUSSET

Quarterly October 1933

Warp -- 257 threads. We would need to add five threads on each edge, 2-1-2-3-4.

Weave -- $\frac{1}{2}$ " for heading

As many repeats as required for a strip 17" long.

UTILITY CASES

Quarterly October 1932

Warp -- 67 threads, using the edge 3-4-1-2

One repeat of pattern

Second edge -- omit two add 4-3 using a double edge thread.

This weaves a strip about two inches wide finished. Weave about $5\frac{1}{2}$ " or the nearest amount to complete the pattern.

The small cases carry some little safety pins, needles, thread wound on card and a few straight pins.

DRAFT — FROM SPECK COLLECTION 1723 — PENN. ART MUSEUM

EDGE

1
2
3
4

REPEAT

K

FOOT TABLE
LOOM LOOM

3-4 1-2

2-3 1-4

1-2 3-4

2-3 1-4

1-2 3-4

2-3 1-4

3-4 1-2

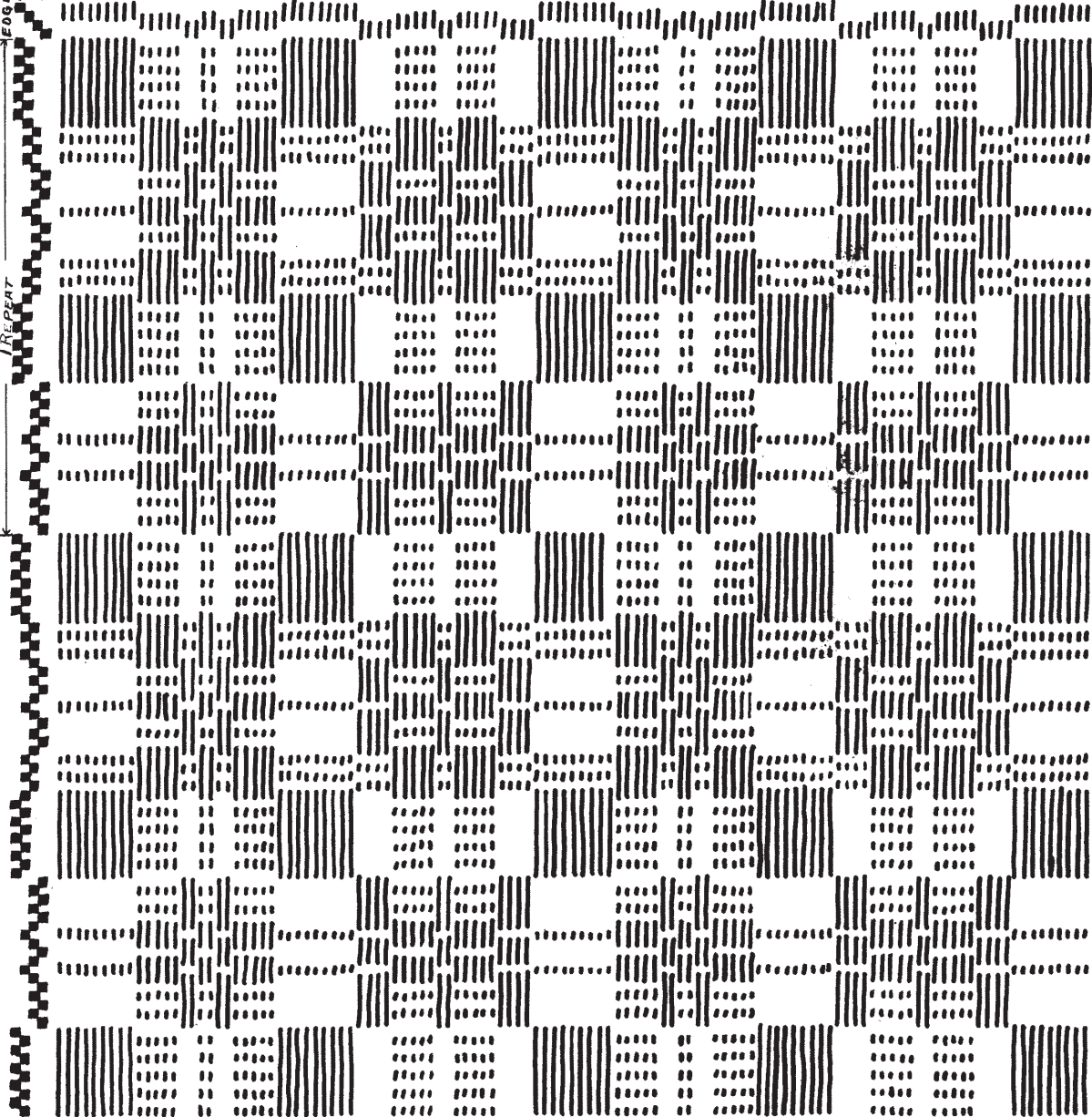
1-2 3-4

2-3 1-4

1-2 3-4

2-3 1-4

1-2 3-4



MLD

The preceding draft is another from the Speck collection (1723) in the Pennsylvania Art Museum in Philadelphia. It makes a very satisfactory fabric for upholstery woven on a warp of 20/2 cotton or 40/2 linen set 36 or 40 ends to the inch with Perle cotton No. 5 or Homespun yarn in one color, two shades of one color or in two colors for the pattern and Perle cotton No. 20, 40/2 linen or Weaving Special for the binder. Weaving Special in tan and one strand of mercerised six strand cotton in bright green wound together on the bobbin makes a very good binder with a dark green or dark brown pattern thread. This is an excellent way to "pep up" a dark fabric.

This threading may be used equally well for linen luncheon sets, using Bernat's Linen Weaver for the pattern and Linen Special for the binder on a warp of 50/2 linen set 40 ends to the inch. A 20/2 cotton warp combines well with the linen weft, but should be set only 32 to 36 ends to the inch.

Natural linen for the warp and binder and the "half bleach" linen for the pattern make very attractive luncheon sets, table covers and runners.

M.L.D.