

T H E W E A V E R ' S Q U A R T E R L Y

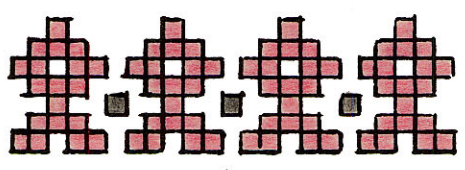
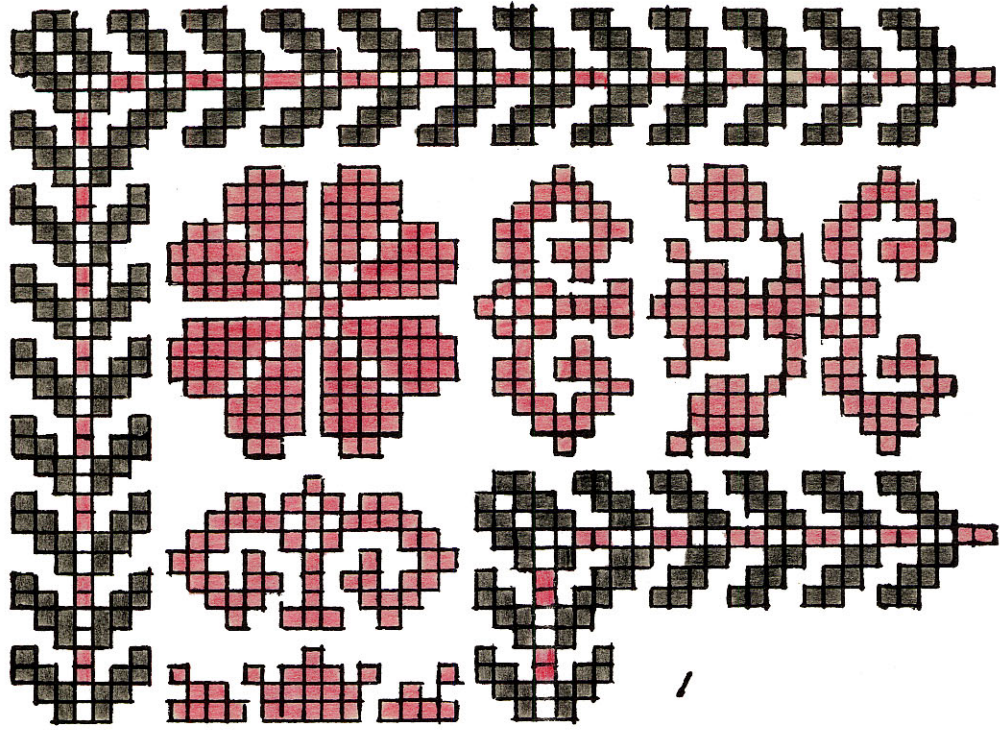
Kate Van Cleve

Volume 4 Number 1

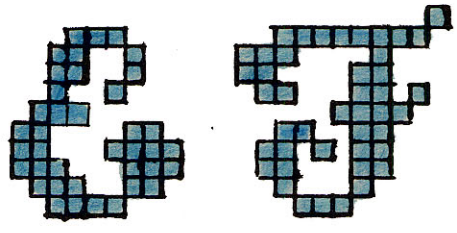
January 1938

Copyright
1938
Kate Van Cleve

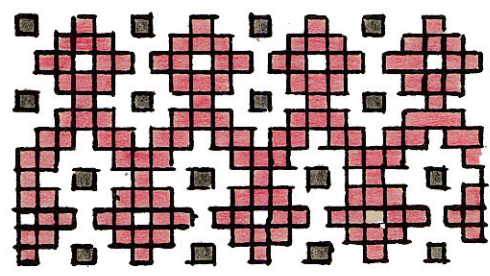
DESIGNS FOR EMBROIDERY WEAVES



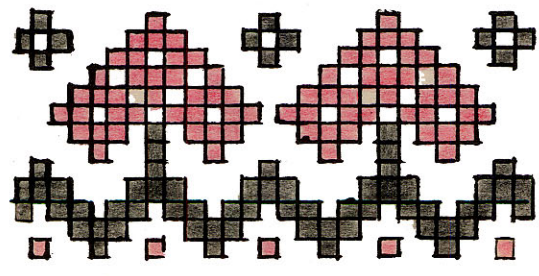
2



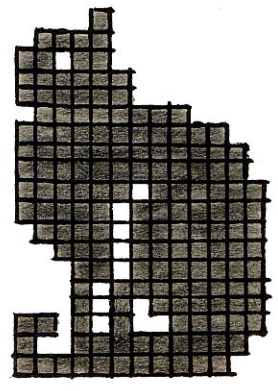
5



3



4



6

EMBROIDERY WEAVES

No. I. This may be woven in either Swedish or French Embroidery Weave with two threads of Fabri on a dull cotton warp of some neutral color: very light ecru with the center pattern in yellow, orange, and dark colonial blue for the edge pattern.

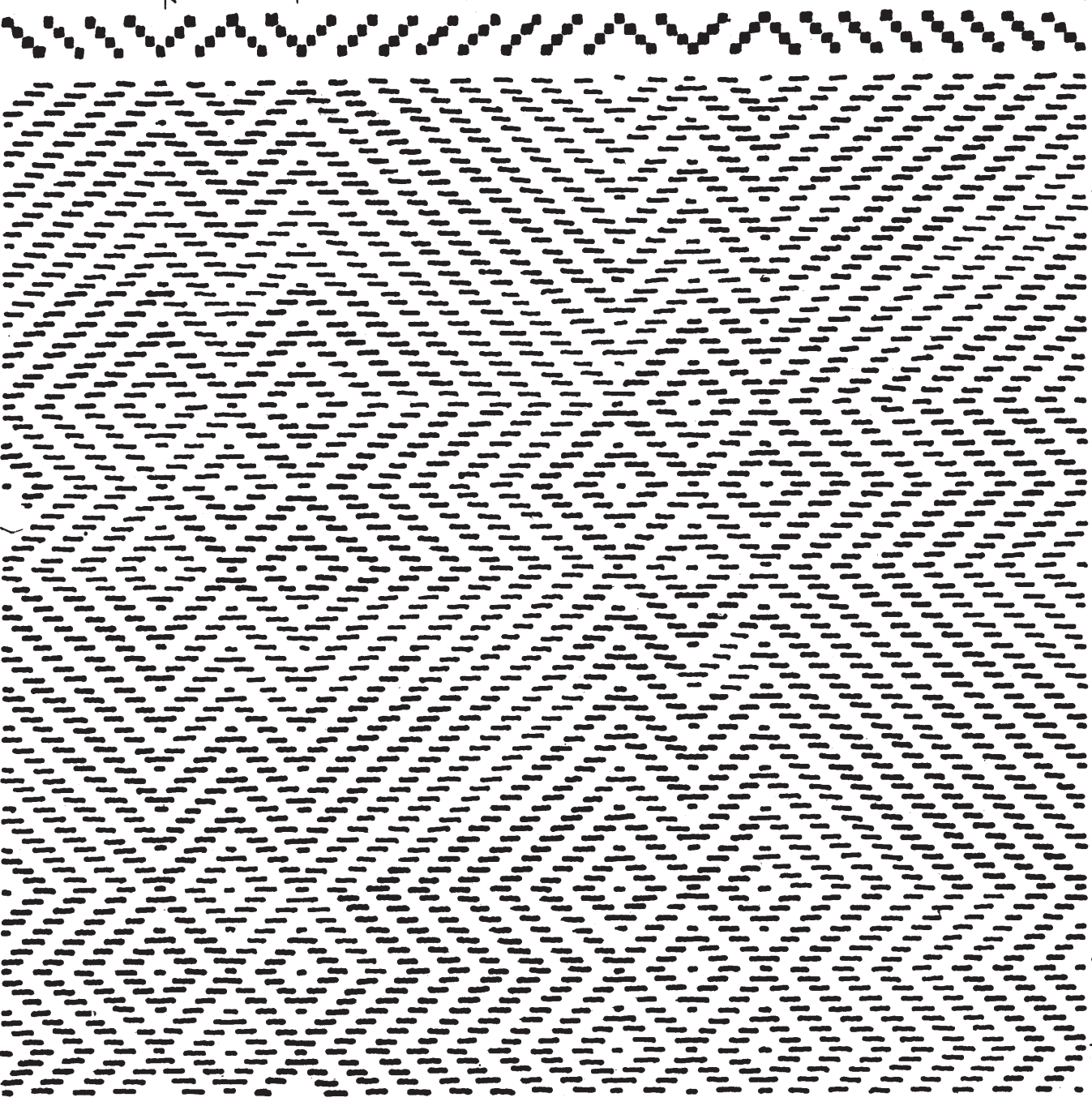
Nos. II, III and IV are most attractive in red and black with a grey weft for a peasant blouse, or if used on the ends of natural linen guest towels.

No. V. The alphabet of initials for towels in French Embroidery Weave continued.

No. VI. The cat, or the two cats are enjoyed by children as decoration on their bibs. These are made of strand mercerized cotton in laid-in weave. One cat of soft black or grey wool may be used on a carriage blanket of light colonial blue.

DRAFT TAKEN FROM YELLOW LINEN PIECE BROUGHT BACK BY MRS CHANNING C. SIMMONS
FROM THE SCHOOL AT SÄTERGLÄNTAN, INSJÖN, SWEDEN.

← B ——— X ——— A → ONE REPEAT OF PATTERN



TREADING

	TREADLE LOOM	TABLE LOOM
1	4	3
2	3	4
3	4	3
4	3	4
5	4	3
6	3	4
7	4	3
8	3	4
9	4	3
10	3	4
11	4	3
12	3	4
13	4	3
14	3	4
15	4	3
16	3	4
17	4	3
18	3	4
19	4	3
20	3	4
21	4	3
22	3	4
23	4	3
24	3	4
25	4	3
26	3	4
27	4	3
28	3	4
29	4	3
30	3	4
31	4	3
32	3	4
33	4	3
34	3	4
35	4	3
36	3	4
37	4	3
38	3	4
39	4	3
40	3	4
41	4	3
42	3	4
43	4	3
44	3	4
45	4	3
46	3	4
47	4	3
48	3	4
49	4	3
50	3	4
51	4	3
52	3	4
53	4	3
54	3	4
55	4	3
56	3	4
57	4	3
58	3	4
59	4	3
60	3	4
61	4	3
62	3	4
63	4	3
64	3	4
65	4	3
66	3	4
67	4	3
68	3	4
69	4	3
70	3	4
71	4	3
72	3	4
73	4	3
74	3	4
75	4	3
76	3	4
77	4	3
78	3	4
79	4	3
80	3	4
81	4	3
82	3	4
83	4	3
84	3	4
85	4	3
86	3	4
87	4	3
88	3	4
89	4	3
90	3	4
91	4	3
92	3	4
93	4	3
94	3	4
95	4	3
96	3	4
97	4	3
98	3	4
99	4	3
100	3	4

ONE REPEAT OF PATTERN

SWEDISH LINENS

This weave is especially good for bureau scarves and table runners. It makes a very strong, rather heavy linen when woven closely, about 14 inches wide.

Materials:- Warp Natural linen 40/2 or 50/2.

Weft 40 singles. The one from which these directions were worked out was of a soft yellow.

Warp chain:- Make the chain of 347 double threads of the natural linen.

Threading:- Use a 23 dent reed and thread a double thread through each dent, or

Use a 12 dent reed and thread two double threads through each dent of the reed.

Thread 3 repeats of the pattern of 90 threads A through B --- 270 threads.

Thread X back through A --- 77 threads. (Total 347 threads).

Weaving:- Heading of $\frac{1}{2}$ inch plain weave.

Threading given at right of draft, read from top down.

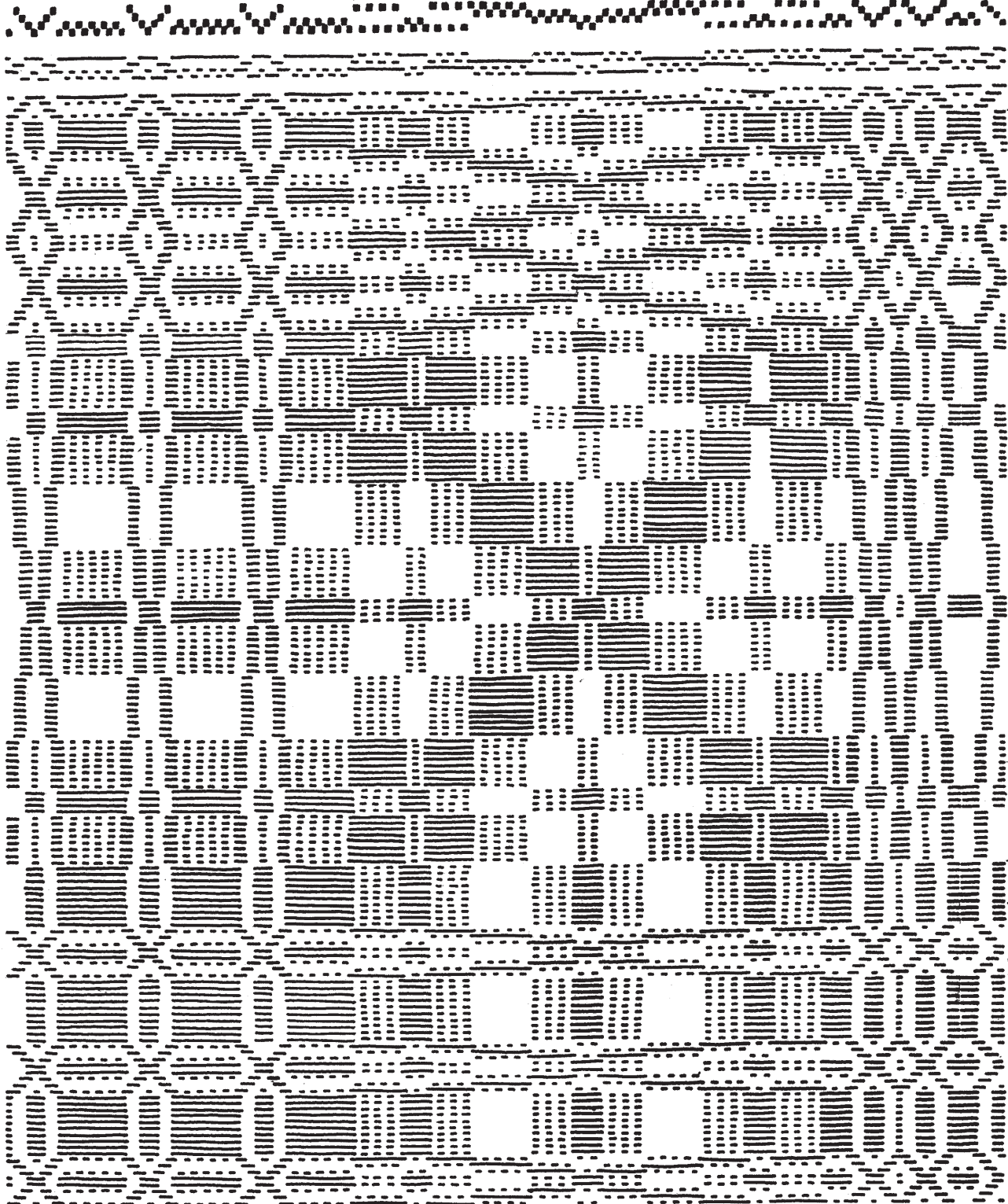
Watch your beat so as to make the small units square and the twill at a 45° angle.

CENTER UNIT

DIAMONDS AND SQUARES

A EDGE

TREADLING



TREADLE LOOM	TABLE LOOM
1 3 4 2 4 3	1 3 4 2 3 2
5(1-2)	5(1-2)
2(1-4)	2(2-3)
2(3-4)	2(1-2)
2(2-3)	2(1-4)
3(1-2)	3(3-4)
2(2-3)	2(1-4)
2(3-4)	2(1-2)
3(1-4)	3(2-3)
2(3-4)	2(1-2)
2(2-3)	2(1-4)
3(1-2)	3(3-4)
2(2-3)	2(1-4)
2(3-4)	2(1-2)
2(1-4)	2(2-3)
4(1-2)	4(3-4)
8(1-4)	8(2-3)
4(1-2)	4(3-4)
8(1-4)	8(2-3)
10(3-4)	10(1-2)
8(2-3)	8(1-4)
4(1-2)	4(3-4)
8(2-3)	8(1-4)
10(3-4)	10(1-2)
8(1-4)	8(2-3)
4(1-2)	4(3-4)
8(1-4)	8(2-3)
10(1-2)	10(3-4)
1 3 4 2 3 4	2 3 4 2 3 4
10(1-2)	10(3-4)

BORDER

CENTER UNIT

DIAMONDS AND SQUARES

LUNCHEON SET

For the bride, or for a very festive occasion, a delightful luncheon set may be made of linen or soft finished cotton and a silver thread woven together for the pattern, with a fine white binder; or a soft finished linen or mercerized cotton for the pattern and a fine silver thread for the binder.

Materials:-

Warp White common cotton 20/2

Weft White mercerized cotton 10/2 for pattern,
or soft finish linen.

A fine silver thread about the size of 20/2 for binder.

15 dent reed threaded 2 threads of warp to each dent.

Warp Chain:- 379 threads 6 yards long will make 6 place mats
and a center piece 12" x 36".

Threading:- The right edge 1 2 3 4, a double thread in
No. 4 -- -- -- -- -- 5 threads
Right border A thru B -- 98 threads
9 repeats of center unit -- 162 "
Left border begin at X
through A -- -- -- -- -- 109 "
Left edge 4 3 2 1 -- -- -- 5 "
(double thread in No. 1) _____
379 threads

Luncheon Set (continued)

Weaving:-

Heading - weave $\frac{1}{2}$ inch of same material as warp,
begin weaving the pattern with the edge
1 row each (1--2) - (2--3) - (3--4) - (1--4)
silver binder, Perle 10 for pattern.

Weave the border, beginning at the top with 5 rows of 1--2. Continue to follow the treadling down as given at right of draft. Weave as many repeats of center unit as are necessary to make the place mat 17 inches long. To make certain of this length measure the first edge and border, then allow the same for the second edge and border. Use the balance of the 17 inches for center repeats.

Be sure that you add the 10 rows of (1--2) before beginning the border for the second end.

Center Piece

Heading - one half ($\frac{1}{2}$) inch.

The center piece may have a hem woven of the silver, plain weave $1\frac{1}{2}$ inches wide, (this allows for turning a small hem).

Continue as for place mat using the center unit for the entire center.

Finish the second end by reversing whatever you did at the beginning.

WOOL

Wool is one of the most interesting materials to use, though each type presents new difficulties to the weaver.

There is the stretch of the wool warp and weft to be allowed for. The right texture of some of the yarns necessitate careful handling and in some cases one type of wool is used for warp and a second for weft.

Fabri

A fine wool, used for all types of weaving; Scotch plaid scarves, light weight dress material both for warp and weft, warp to be used with homespun weft, and pattern thread for coverlets with a number 12 or 14 cotton warp. Use a 15 dent reed for Fabri, two threads to each dent. This yarn comes in two ounce skeins, 4400 yards to a pound.

Homespun

This rough, uneven textured worsted yarn is hand spun and is used wherever a long wearing material is needed. It is suitable for upholstery material, tweed for suits, coats, etc., and for coverlets.

In reproducing old coverlets a homespun yarn should be used. This yarn comes in 4 ounce skeins, 2200 yards to the pound.

Shetland Wool

Shetland floss is one of the most inexpensive yarns and is sold in one ounce balls 2000 yards to the pound.

For a light weight cloth use a 15 dent reed threaded with one thread through each dent. For firmer cloth use a 20 dent reed with one thread through each dent. This wool is also used for heavy neck scarves.

For the first piece of wool weaving to be used for clothing, weave enough material for a skirt. Use a domestic shetland floss. This is easy to handle in making your warp, putting it on the loom, and weaving.

Shetland is a two ply worsted yarn, 2000 yards to the pound. Cloth for a skirt requires one pound for warp and about $\frac{3}{4}$ of a pound for weft. Two tone effects are most attractive, for instance a soft light tan for warp and a light grey green for weft. Use a 15 dent reed threaded 32 inches wide. Make a four yard warp of 480 threads. Weave so that the threads are just drawn together but do not touch, all the way across. This will make a soft, slightly rough material. Use a twill threading, 1234--1234--1234-- etc. Weave plain, treadle as follows: 1--3, then 2--4, 1--3, 2--4, etc.

In weaving use the following process:

Open the shed using treadles 1--3, throw the shuttle through the shed.

Bring the batten forward, putting the thread in place.

Open shed with treadles 2--4.

Push the batten back; throw the shuttle through the shed.

Bring the batten forward putting this last thread in place.

By using this method you have the minimum of rubbing of the warp threads and also save time.

Note: Most tailors like to use cloth 28 - 30" in width as they consider it cuts to better advantage. Allow 3 inches for shrinkage and thread the reed 32 inches.

For $2\frac{1}{2}$ yards of cloth weave $2\frac{3}{4}$ yards in shetland and fabri. For homespun it is safest to weave about 3 yards as it shrinks more when taken from the loom and also in washing than the other two.

Fabri Warp and Homespun Weft

Novel checked effects for sport clothes.

Two and a half yards for a skirt: five yards for a light weight coat --- fabri for warp.

Fabri is a fine two ply twisted worsted yarn. Several threads together would be required to make it the size of Shetland. It comes 4400 yards to a pound.

15 dent reed threaded two threads in each dent and two threads in each heddle, 32" in the reed.

Warp 960 threads four yards long for a skirt, seven yards long for a coat, or ten yards for a coat and skirt if woven at the same time.

30" width for skirt - warp - 960 threads, 4 yards long - 1 lb. fabri

30" " " coat - " - 960 " 7 " " $1\frac{3}{4}$ " "

30" " " coat and skirt- 960 " 10 " " 2 lbs. "

Homespun for weft; wind two threads on your shuttle together.

Homespun

For a light weight skirt make a four yard warp chain. Use a 15 dent reed threaded one thread to each dent.

For heavy cloth use a 20 dent reed threaded one thread in each dent and draw the weft threads down more firmly.

Index to
The Weaver's Quarterly
through 1937

Alphabet for Embroidery Weaving	July	1937
Baby Blankets	October	1937
Special Draft	April	1935
Twill from Danish Book	July	1935
Bags		
Hand Bag	April	1934
Bell Pull		
Swedish Embroidery Weave	January	1936
Bibs		
Childrens' bibs with pattern in Laid-in Weave	January	1935
Blouse		
Wool with Swedish Embroidery Weave	April	1934
Trimming for blouse in French Embroidery Weave	January	1937
Book Covers		
Four Keys	October	1933
Borders		
Twill	April	1937
Border No. 2	July	1937
Bridge Cloth		
Swedish Embroidery Weave	January	1933
" " "	October	1934
Bureau Scarves		
Honeycomb Pattern	January	1934
Swedish Embroidery Weave	April	1934
" " "	October	1934
Chair Backs		
Swedish Embroidery Weave	April	1936
Cigarette Cases		
No. 1	October	1935
No. 2 Danish Weave	October	1935
Coat Material		
Wool Twill Weave	October	1937
Tweed (Hound's Tooth)	April	1934
Couch Throws		
Special Draft	April	1935
Cover Draft 1847	April	1936
Chaise Longue Throw	July	1933
" " " (coat material)	October	1937

Coverlets			
Honeysuckle Pattern Variation		July	1937
Morning Star		July	1937
Walnut and Wine Colored Cov.		January	1937
Counterpane of Cottons		July	1936
Nine Snowballs		April	1937
Southern Coverlet (upholstery)		April	1933
Quaker Coverlet Patterns		July	1936
Ladies Delight (portieres)		January	1937
Twin Stars	"	July	1935
Saturn or Stars and Rings (pillow cover)		July	1933
Hewett Coverlet Pattern (wall hanging)		April	1936
Coverlet Pattern 1847		April	1936
Looped Weave		January	1934
Coverlet Pattern 1840 (porch pillow)		July	1934
Crib Cover			
Swedish Embroidery Weave		July	1933
Curtains (see Portieres)			
Swedish Emb. Weave		January	1933
Thin Curtain Material		July	1936
Curtain tie backs Swedish Emb. Weave		April	1934
Looped Weave		January	1934
Cushion Cover			
Coverlet Pattern 1847		April	1936
Embroidery Weaves			
French --- Directions ---		April	1933
Purse		April	1933
Neck Scarf		April	1933
Luncheon Set		October	1937
Table Cover		July	1937
Alphabet		July and Oct.	1937
Laid-in -- Directions ---		January	1935
Bibs		July	1935
Luncheon Set		January	1935
Towels		April	1935
"		October	1936
Swedish -- Directions ----		October	1935
Baby Pillows		July	1934
Bell Pull		January	1936
Bags or Towels		October	1936
Boat Designs		January	1933
Chair Back		April	1936
Curtains		January	1933
Linen		January	1934
Nursery Rug		July	1934
Table cloth		October	1937
Table Runner		July	1935
Tray Set		October	1933
Tuck-in Pillow		October	1932
Knee Rugs or Motor Robe		October	1935
Linen -- its use for Weaving		January	1937
Looped Weave		January	1934

Luncheon Sets		
Draft for linen woven in 1775	January	1933
Linen Weave	January	1935
With Swedish Embroidery Patterns	January	1934
Sizes, material, etc.	April	1937
Linen from Swedish Draft	July	1935
Motor Robe or Knee Rug		
Wool	October	1935
Wool (coat material)	October	1937
Neckties		
Wool	January	1936
Nursery Rug		
Swedish Embroidery Weave	July	1934
Pillow Covers		
Tuck-in Pillow	July	1933
Baby Pillows -- Swedish Emb. Weave	July	1934
Porch Pillow -- Coverlet Pattern 1846	July	1934
Portieres		
Twin Stars	July	1935
Ladies' Delight	January	1937
Thin Curtain Material	July	1936
Looped Weave	January	1934
Purses		
French Embroidery Weave	April	1933
Purse with Gussets	October	1933
Small Purse	April	1934
Zipper Purse -- John Landis Pattern	October	1936
Zipper Purse	October	1935
Zipper Purse -- Special Draft	October	1934
Under Arm Purse	October	1932
Rugs		
Knee Rug (coat material)	October	1937
Nursery -- Swedish Emb. Weave	July	1934
Scarves		
Neck Scarf -- French Emb. Weave	April	1933
" " -- Laid in Weave	October	1936
Scotch Tartan -- Frazer --	January	1936
Striped	October	1934
Plaid	October	1934
Stair Carpet		
Walnut and Wine Colored Coverlet	January	1937
Suit Material		
Cotton	April	1935
Halversen	April	1934
Linen	April	1935
Wool for Summer Suits	April	1935
Worsted Dress Material	April	1933

Table Cover, Squares and Runners			
	Finnish Pattern	January	1936
	Linen -- Swedish Emb. Weave	July	1935
	Linen -- Laid-in Weave	April	1935
	Narrow Runner -- John Landis	January	1935
	Table Cover -- Linen	October	1934
	Table Cover -- Looped Weave	January	1934
	Table Cloth -- Boston Museum Draft	October	1937
	" " Swedish Emb. Weave	October	1937
	Table Square -- 1820 Coverlet	October	1932
	" " Swedish Emb. Weave	October	1935
	Honey Comb for Narrow Runner	January	1934
Towels			
	Guest Towels -- French Emb. Weave	July	1936
	Boat -- Swedish Emb. Weave	January	1933
	Danish Pattern	January	1933
Traveling Cases			
	Forget-me-not Pattern	October	1933
Tray Cloths			
	Swedish Emb. Weave	October	1933
Twill Weaves			
	Baby Blanket -- Danish Pattern	July	1933
	Twill Threading -- Hound's Tooth Pattern	April	1934
Upholstery Materials			
	Special Draft	October	1936
	Special Draft	April	1935
	Southern Coverlet Pattern	April	1933
	Twin Stars	July	1935
	Youth and Beauty	October	1937
Utility Cases			
	Forget-me-not Pattern	October	1933
Wall Hangings			
	Hewett Coverlet Pattern	April	1936